

Cap/taLand



One
Pearl
Bank

Tropical Hygge

(pronounced 'hoo-ga')

Welcoming spaces where one's cares
simply melt away. A home where Hygge
unlocks the comfort and calm of the living
spaces within to help you live well.



There are places we seek.



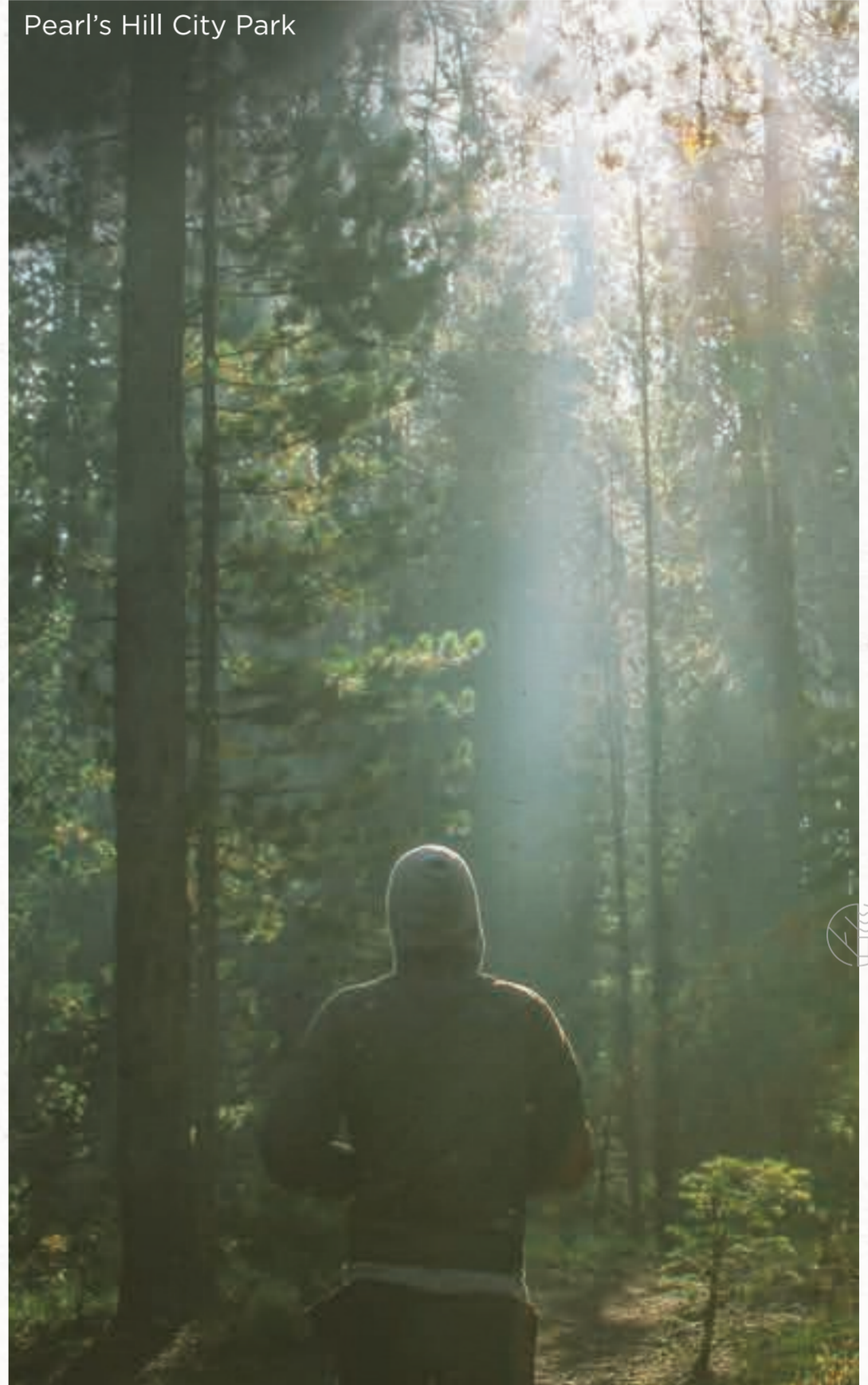
Social Terrace



That make us feel whole again.



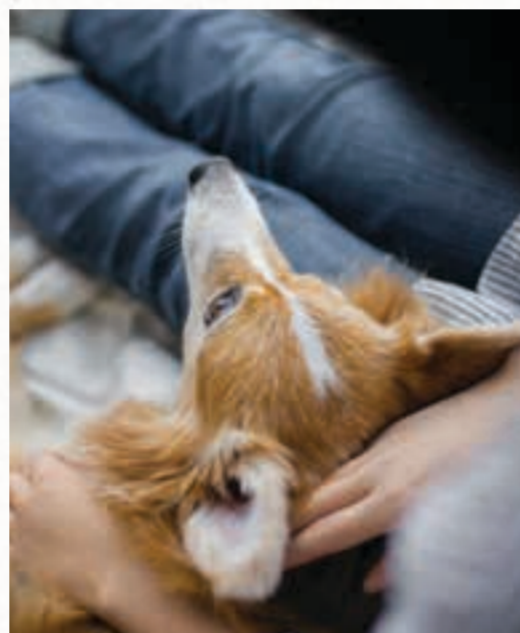
Pearl's Hill City Park



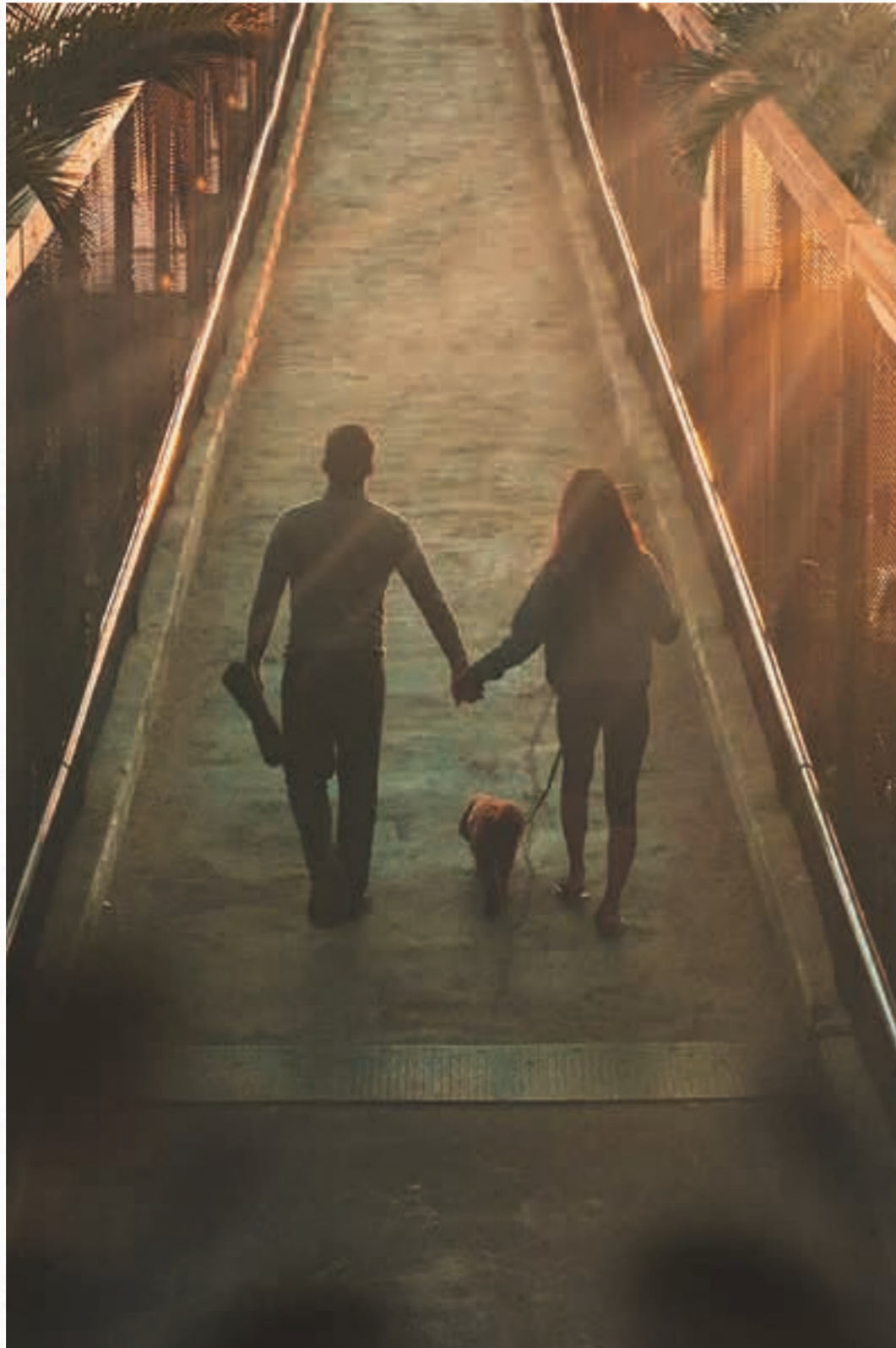
Places of respite, regeneration and renewal.



This is the place that provides.



This is where Hygge
Comes home in the tropics.



Where the grounds are designed to
Soothe the senses.





Artist's Impression

Where the lapping *Water refreshes.*





Where the paths lead to reflective nooks that are havens

For meditation and reflection.



Open yourself to new views and *New Experiences.*

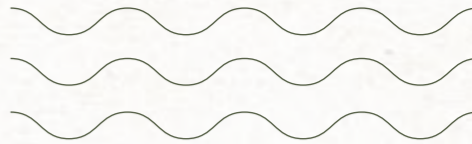


Artist's Impression

Put down roots where we *Plant a community.*

Relish the pleasure of seeing your garden grow.

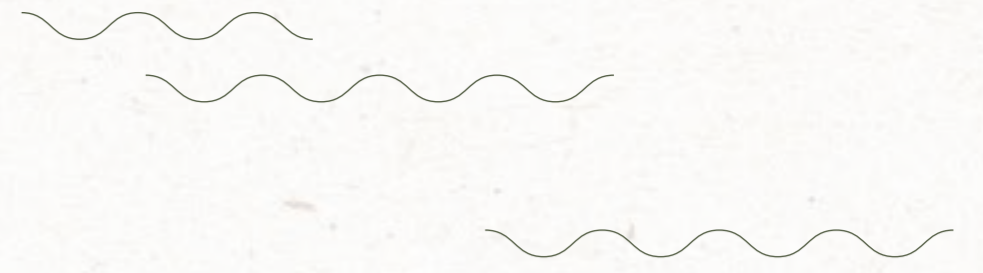




And when you turn your gaze to the views,
You are happy to have chosen this place.



For even inside, you can move in with zero stress,
because Renovation Zero *Makes room for everything.*



Where spaces and surfaces *Comfort you.*





This is where
Hygge finds its home
in the tropics



What's at your doorstep?

Your comfort zone.



Comfort Food

5 minutes walk

Tiong Bahru
Keong Saik Road
Bukit Pasoh
Chinatown

Connect in comfort

5 minutes walk/drive

Triple-line Outram MRT Interchange
CTE/AYE/PIE
KPE/ECP

25 minutes ride away

CBD/Marina Bay (15 minutes)
Orchard Road (10 minutes)
Changi Airport/Jewel (25 minutes)

Comfort Breaks

10 minutes ride away

Gardens by the Bay
Sentosa
Marina Bay Sands
Pearl's Hill City Park
Fort Canning Park

Cultural Connections

10 minutes ride away

National Museum
National Gallery
Asian Civilisations Museum
Esplanade



LEGEND:

- Central Business District
- Medical Hub
- Arts & Cultural District
- Downtown Line
- Circle Line
- North East Line
- East West Line
- North South Line
- Thomson-East Coast Line
- Work
- F&B
- Retail
- Leisure & Entertainment



One Pearl Bank

Pearl's Hill City Park

Outram Park MRT
EW16 | NE3 | TE17

Chinatown MRT
NE4 | DT19

Raffles Place MRT
EW14 | NS26

Marina Bay MRT
NS27 | CE3 | TE20

Prince Edward MRT
CC32 (U/C)

Cantonment MRT
CC31 (U/C)

Keppel MRT
CC30 (U/C)

Greater Southern Waterfront

500 m

Legend:

- A** Pedestrian Access Gate
- B** Eco-pond
- C** Access to Basement 2
- D** Outdoor Pavilions
- E** Swimming Pool
- F** Aqua Gym
- G** Hydromassage Pool
- H** In-Pool Lounge Chairs
- I** BBQ Area
- J** Kids' Pool
- K** Kids' Play Lawn
- L** Function Room
- M** Labyrinth Trail
- N** Exercise Corner
- O** Access to Park
- P** Playground
- Q** Pets Park
- R** Drop-off
- S** Allotment Garden (at every 4 floors)
- T** Service Area (Ground Floor)
– Genset
- T1** Service Area (Basement 1)
– Bin Center
– Electrical Substation

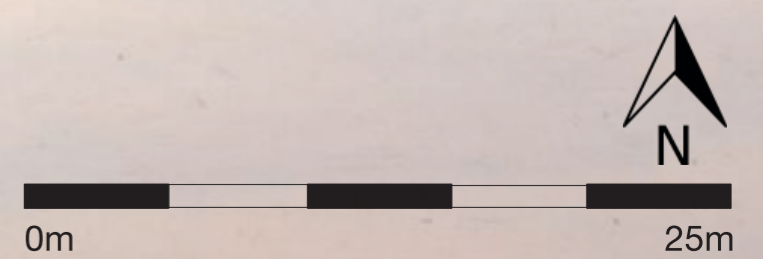


PRIVÉ TERRACE L14

- A Water Feature
- B Outdoor Lounge
- C Yoga Deck
- D Exercise Lawn
- E Meditation Corner

SOCIAL TERRACE L18

- F Outdoor Lounge
- G Alfresco Dining
- H Open Amphitheatre
- I Entertainment Area
- J Changing Room



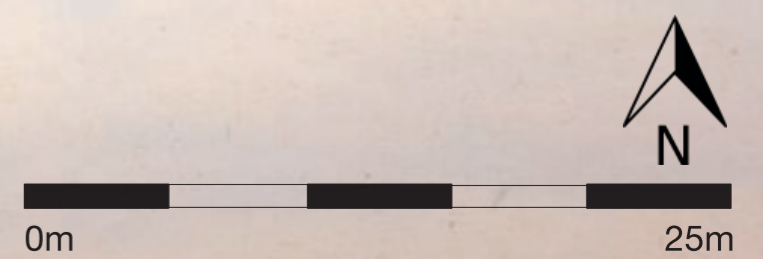
SKY OCULUS (L39)

Outdoor Spaces

- A** Alfresco Dining Area
- B** Skybridge
- C** Lawn Area
- D** Garden Lounge
- E** Walking Track
- F** Outdoor Gym Area
- G** Outdoor Lounge Area

Indoor Spaces

- H** Changing Room
- I** Gym
- J** Washroom
- K** Function Room
- L** Gourmet Kitchen
- M** Social Lounge



UNIT DISTRIBUTION

Legend

Type A – STUDIO
Type B – 1 BEDROOM
Type C – 2 BEDROOM
Type D – 3 BEDROOM
Type E – 4 BEDROOM
Type F – PENTHOUSE

Storey/ Unit No.	1	2	3	4	5	6	7	8	9	10	11	
SKY OCULUS												
39												
38	F4				F3							
37	D1-c	A1-b (m)	A1-b	C1-c	C1-c (m)	C2-c	D2-c	D3-c	B1-b	B2-b	C3-c	
36	D1-b	A1-b (m)	A1-b	C1-b	C1-b (m)	C2-b	D2-b	D3-b	B1-b	B2-b	C3-b	
35	D1-a	A1-a (m)	A1-a	C1-a	C1-a (m)	C2-a	D2-a	D3-a	B1-a	B2-a	C3-a	
34	D1-b	A1-b (m)	A1-b	C1-b	C1-b (m)	C2-b	D2-b	D3-b	B1-b	B2-b	C3-b	
33	D1-c	A1-b (m)	A1-b	C1-c	C1-c (m)	C2-c	D2-c	D3-c	B1-b	B2-b	C3-c	
32	D1-b	A1-b (m)	A1-b	C1-b	C1-b (m)	C2-b	D2-b	D3-b	B1-b	B2-b	C3-b	
31	D1-a	A1-a (m)	A1-a	C1-a	C1-a (m)	C2-a	D2-a	D3-a	B1-a	B2-a	C3-a	
30	D1-b	A1-b (m)	A1-b	C1-b	C1-b (m)	C2-b	D2-b	D3-b	B1-b	B2-b	C3-b	
29	D1-c	A1-b (m)	A1-b	C1-c	C1-c (m)	C2-c	D2-c	D3-c	B1-b	B2-b	C3-c	
28	D1-b	A1-b (m)	A1-b	C1-b	C1-b (m)	C2-b	D2-b	D3-b	B1-b	B2-b	C3-b	
27	D1-a	A1-a (m)	A1-a	C1-a	C1-a (m)	C2-a	D2-a	D3-a	B1-a	B2-a	C3-a	
26	D1-b	A1-b (m)	A1-b	C1-b	C1-b (m)	C2-b	D2-b	D3-b	B1-b	B2-b	C3-b	
25	D1-c	A1-b (m)	A1-b	C1-c	C1-c (m)	C2-c	D2-c	D3-c	B1-b	B2-b	C3-c	
24	D1-b	A1-b (m)	A1-b	C1-b	C1-b (m)	C2-b	D2-b	D3-b	B1-b	B2-b	C3-b	
23	D1-a	A1-a (m)	A1-a	C1-a	C1-a (m)	C2-a	D2-a	D3-a	B1-a	B2-a	C3-a	
22	D1-b	A1-b (m)	A1-b	C1-b	C1-b (m)	C2-b	D2-b	D3-b	B1-b	B2-b	C3-b	
21	D1-c	A1-b (m)	A1-b	C1-c	C1-c (m)	C2-c	D2-c	D3-c	B1-b	B2-b	C3-c	
20	D1-b	A1-b (m)	A1-b	C1-b	C1-b (m)	C2-b	D2-b	D3-b	B1-b	B2-b	C3-b	
19	D1-a	A1-a (m)	A1-a	C1-a	C1-a (m)	C2-a	D2-a	D3-a	B1-a	B2-a	C3-a	
SOCIAL TERRACE												
18												
17	D1-b	A1-b (m)	A1-b	C1-b	C1-b (m)	C2-b	D2-b	D3-b	B1-b	B2-b	C3-b	
16	D1-c	A1-b (m)	A1-b	C1-c	C1-c (m)	C2-c	D2-c	D3-c	B1-b	B2-b	C3-c	
15	D1-b	A1-b (m)	A1-b	C1-b	C1-b (m)	C2-b	D2-b	D3-b	B1-b	B2-b	C3-b	
14	D1-a	A1-a (m)	A1-a	C1-a	C1-a (m)	C2-a	D2-a	D3-a	B1-a	B2-a	C3-a	
13	D1-b	A1-b (m)	A1-b	C1-b	C1-b (m)	C2-b	D2-b	D3-b	B1-b	B2-b	C3-b	
12	D1-c	A1-b (m)	A1-b	C1-c	C1-c (m)	C2-c	D2-c	D3-c	B1-b	B2-b	C3-c	
11	D1-b	A1-b (m)	A1-b	C1-b	C1-b (m)	C2-b	D2-b	D3-b	B1-b	B2-b	C3-b	
10	D1-a	A1-a (m)	A1-a	C1-a	C1-a (m)	C2-a	D2-a	D3-a	B1-a	B2-a	C3-a	
9	D1-b	A1-b (m)	A1-b	C1-b	C1-b (m)	C2-b	D2-b	D3-b	B1-b	B2-b	C3-b	
8	D1-c	A1-b (m)	A1-b	C1-c	C1-c (m)	C2-c	D2-c	D3-c	B1-b	B2-b	C3-c	
7	D1-b	A1-b (m)	A1-b	C1-b	C1-b (m)	C2-b	D2-b	D3-b	B1-b	B2-b	C3-b	
6	D1-a	A1-a (m)	A1-a	C1-a	C1-a (m)	C2-a	D2-a	D3-a	B1-a	B2-a	C3-a	
5	D1-b	A1-b (m)	A1-b	C1-b	C1-b (m)	C2-b	D2-b	D3-b	B1-b	B2-b	C3-b	
4	D1-c	A1-b (m)	A1-b	C1-c	C1-c (m)	C2-c	D2-c	D3-c	B1-b	B2-b	C3-c	
3	D1-b	A1-b (m)	A1-b	C1-b	C1-b (m)	C2-b	D2-b	D3-b	B1-b	B2-b	C3-b	
2	D1-a	A1-a (m)	A1-a	C1-a	C1-a (m)	C2-a	D2-a	D3-a	B1-a	B2-a	C3-a	

Storey/ Unit No.	12	13	14	15	16	17	18	19	20	21	22	
SKY OCULUS												
38												
37	F2				F1							
36	D1-c	A1-b (m)	A1-b	C1-c	C1-c (m)	B4-b	E1-c	C4-c	B1-b	B3-b	C3-c	
35	D1-b	A1-b (m)	A1-b	C1-b	C1-b (m)	B4-b	E1-b	C4-b	B1-b	B3-b	C3-b	
34	D1-a	A1-a (m)	A1-a	C1-a	C1-a (m)	B4-a	E1-a	C4-a	B1-a	B3-a	C3-a	
33	D1-b	A1-b (m)	A1-b	C1-b	C1-b (m)	B4-b	E1-b	C4-b	B1-b	B3-b	C3-b	
32	D1-c	A1-b (m)	A1-b	C1-c	C1-c (m)	B4-b	E1-c	C4-c	B1-b	B3-b	C3-c	
31	D1-b	A1-b (m)	A1-b	C1-b	C1-b (m)	B4-b	E1-b	C4-b	B1-b	B3-b	C3-b	
30	D1-a	A1-a (m)	A1-a	C1-a	C1-a (m)	B4-a	E1-a	C4-a	B1-a	B3-a	C3-a	
29	D1-b	A1-b (m)	A1-b	C1-b	C1-b (m)	B4-b	E1-b	C4-b	B1-b	B3-b	C3-b	
28	D1-c	A1-b (m)	A1-b	C1-c	C1-c (m)	B4-b	E1-c	C4-c	B1-b	B3-b	C3-c	
27	D1-b	A1-b (m)	A1-b	C1-b	C1-b (m)	B4-b	E1-b	C4-b	B1-b	B3-b	C3-b	
26	D1-a	A1-a (m)	A1-a	C1-a	C1-a (m)	B4-a	E1-a	C4-a	B1-a	B3-a	C3-a	
25	D1-b	A1-b (m)	A1-b	C1-b	C1-b (m)	B4-b	E1-b	C4-b	B1-b	B3-b	C3-b	
24	D1-c	A1-b (m)	A1-b	C1-c	C1-c (m)	B4-b	E1-c	C4-c	B1-b	B3-b	C3-c	
23	D1-b	A1-b (m)	A1-b	C1-b	C1-b (m)	B4-b	E1-b	C4-b	B1-b	B3-b	C3-b	
22	D1-a	A1-a (m)	A1-a	C1-a	C1-a (m)	B4-a	E1-a	C4-a	B1-a	B3-a	C3-a	
21	D1-b	A1-b (m)	A1-b	C1-b	C1-b (m)	B4-b	E1-b	C4-b	B1-b	B3-b	C3-b	
20	D1-c	A1-b (m)	A1-b	C1-c	C1-c (m)	B4-b	E1-c	C4-c	B1-b	B3-b	C3-c	
19	D1-b	A1-b (m)	A1-b	C1-b	C1-b (m)	B4-b	E1-b	C4-b	B1-b	B3-b	C3-b	
18	D1-a	A1-a (m)	A1-a	C1-a	C1-a (m)	B4-a	E1-a	C4-a	B1-a	B3-a	C3-a	
17	D1-b	A1-b (m)	A1-b	C1-b	C1-b (m)	B4-b	E1-b	C4-b	B1-b	B3-b	C3-b	
16	D1-c	A1-b (m)	A1-b	C1-c	C1-c (m)	B4-b	E1-c	C4-c	B1-b	B3-b	C3-c	
15	D1-b	A1-b (m)	A1-b	C1-b	C1-b (m)	B4-b	E1-b	C4-b	B1-b	B3-b	C3-b	
PRIVÉ TERRACE												
14												
13	D1-b	A1-b (m)	A1-b	C1-b	C1-b (m)	B4-b	E1-b	C4-b	B1-b	B3-b	C3-b	
12	D1-c	A1-b (m)	A1-b	C1-c	C1-c (m)	B4-b	E1-c	C4-c	B1-b	B3-b	C3-c	
11	D1-b	A1-b (m)	A1-b	C1-b	C1-b (m)	B4-b	E1-b	C4-b	B1-b	B3-b	C3-b	
10	D1-a	A1-a (m)	A1-a	C1-a	C1-a (m)	B4-a	E1-a	C4-a	B1-a	B3-a	C3-a	
9	D1-b	A1-b (m)	A1-b	C1-b	C1-b (m)	B4-b	E1-b	C4-b	B1-b	B3-b	C3-b	
8	D1-c	A1-b (m)	A1-b	C1-c	C1-c (m)	B4-b	E1-c	C4-c	B1-b	B3-b	C3-c	
7	D1-b	A1-b (m)	A1-b	C1-b	C1-b (m)	B4-b	E1-b	C4-b	B1-b	B3-b	C3-b	
6	D1-a	A1-a (m)	A1-a	C1-a	C1-a (m)	B4-a	E1-a	C4-a	B1-a	B3-a	C3-a	
5	D1-b	A1-b (m)	A1-b	C1-b	C1-b (m)	B4-b	E1-b	C4-b	B1-b	B3-b	C3-b	
4	D1-c	A1-b (m)	A1-b	C1-c	C1-c (m)	B4-b	E1-c	C4-c	B1-b	B3-b	C3-c	
3	D1-b	A1-b (m)	A1-b	C1-b	C1-b (m)	B4-b	E1-b	C4-b	B1-b	B3-b	C3-b	
2	D1-a	A1-a (m)	A1-a	C1-a	C1-a (m)	B4-a	E1-a	C4-a	B1-a	B3-a	C3-a	



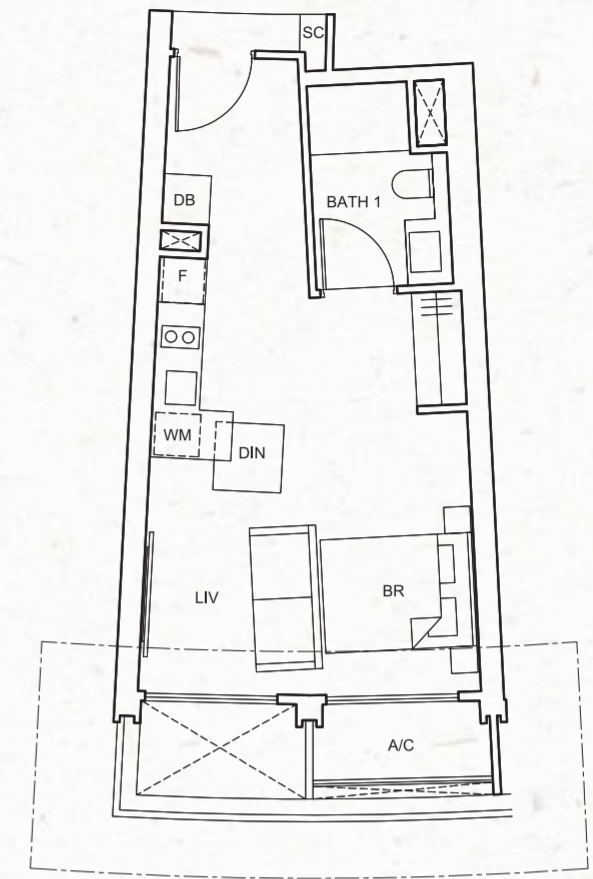
One Pearl Bank

FLOOR PLANS

TYPE A1-a
40 sq m / 431 sq ft

#02-03; #06-03; #10-03; #14-03; #19-03;
#23-03; #27-03; #31-03; #35-03;

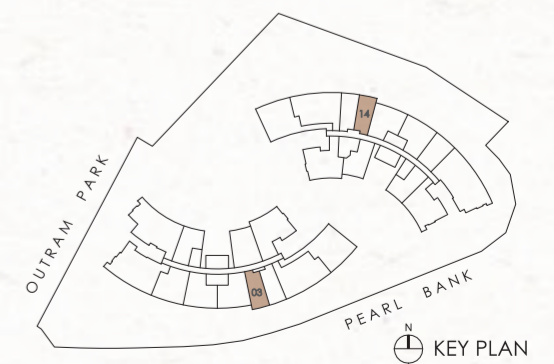
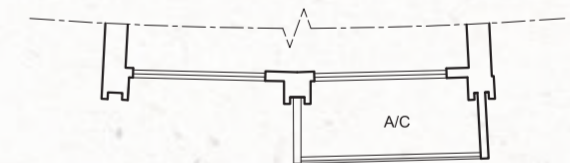
#02-14; #06-14; #10-14; #15-14; #19-14;
#23-14; #27-14; #31-14; #35-14



TYPE A1-b
40 sq m / 431 sq ft

#03-03; #04-03; #05-03; #07-03; #08-03;
#09-03; #11-03; #12-03; #13-03; #15-03;
#16-03; #17-03; #20-03; #21-03; #22-03;
#24-03; #25-03; #26-03; #28-03; #29-03;
#30-03; #32-03; #33-03; #34-03; #36-03;
#37-03;

#03-14; #04-14; #05-14; #07-14; #08-14;
#09-14; #11-14; #12-14; #13-14; #16-14;
#17-14; #18-14; #20-14; #21-14; #22-14;
#24-14; #25-14; #26-14; #28-14; #29-14;
#30-14; #32-14; #33-14; #34-14; #36-14;
#37-14;



All floor areas indicated are inclusive of AC ledge, planters and balcony where applicable. The plans are subject to change as may be approved by the relevant authorities. All floor plans are approximate measurements only and subject to government re-survey. The balcony shall not be enclosed unless with the approved balcony screen. The installation and cost of the balcony screen shall be borne by the purchaser. For an illustration of the approved balcony screen, please refer to the diagram annexed hereto as "Annexure".

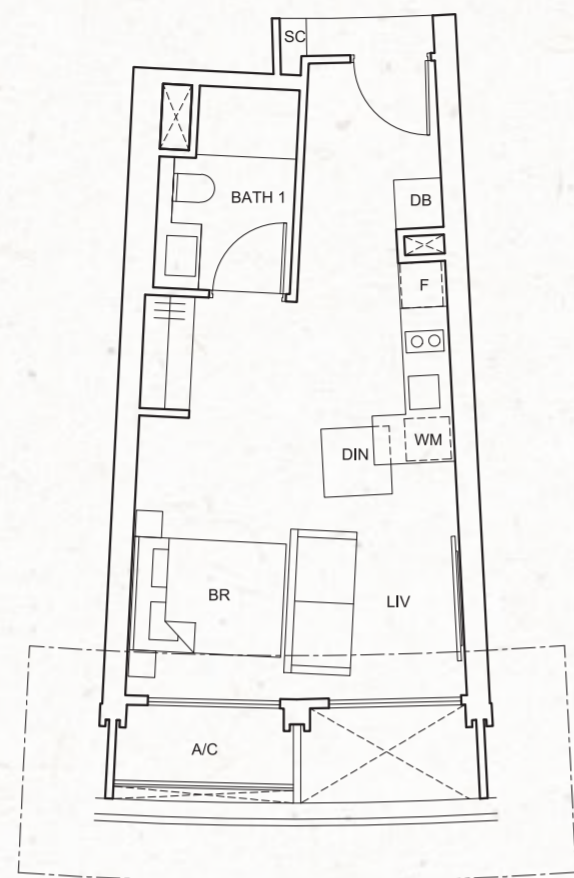
STUDIO

1-BEDROOM

TYPE A1-a(m)
40 sq m / 431 sq ft

#02-02; #06-02; #10-02; #14-02; #19-02;
#23-02; #27-02; #31-02; #35-02;

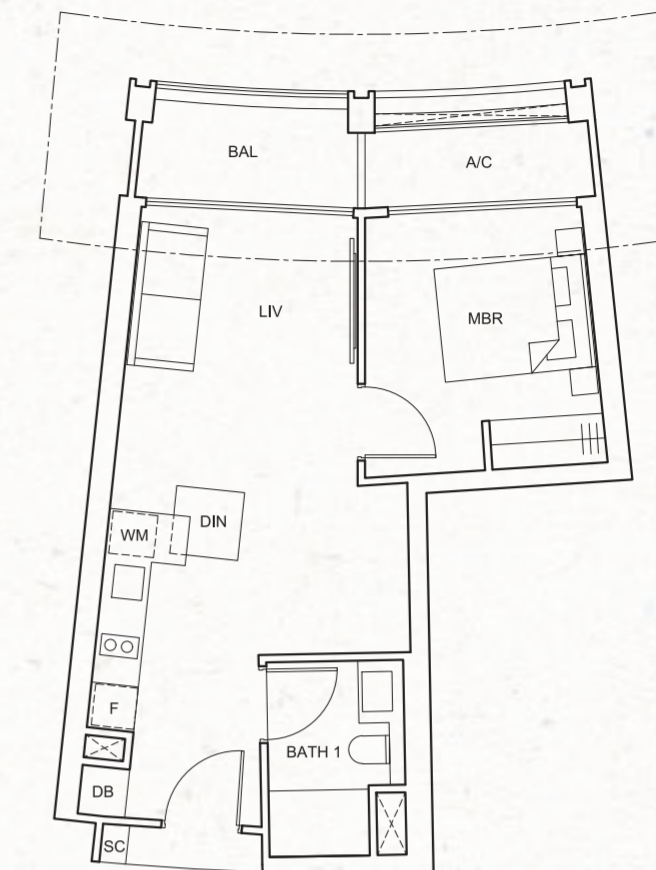
#02-13; #06-13; #10-13; #15-13; #19-13;
#23-13; #27-13; #31-13; #35-13



TYPE B1-a
53 sq m / 570 sq ft

#02-09; #06-09; #10-09; #14-09; #19-09;
#23-09; #27-09; #31-09; #35-09;

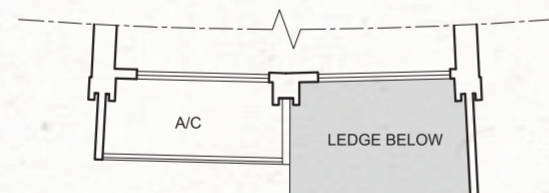
#02-20; #06-20; #10-20; #15-20; #19-20;
#23-20; #27-20; #31-20; #35-20



TYPE A1-b(m)
40 sq m / 431 sq ft

#03-02; #04-02; #05-02; #07-02; #08-02;
#09-02; #11-02; #12-02; #13-02; #15-02;
#16-02; #17-02; #20-02; #21-02; #22-02;
#24-02; #25-02; #26-02; #28-02; #29-02;
#30-02; #32-02; #33-02; #34-02; #36-02;
#37-02;

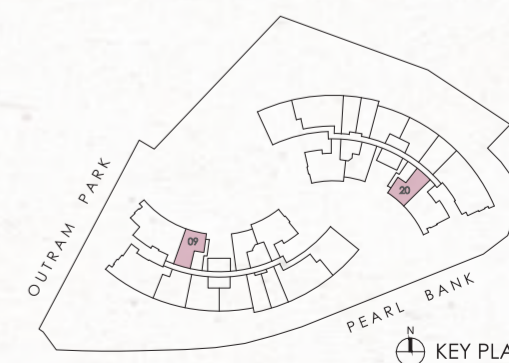
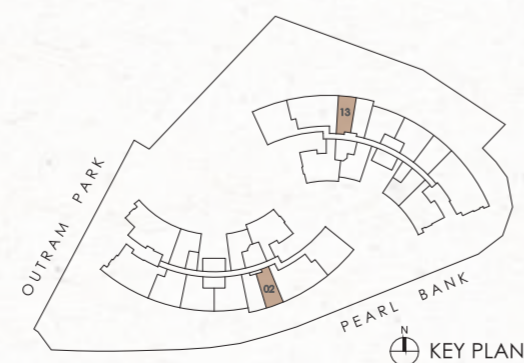
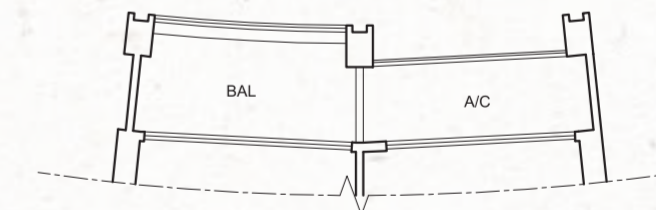
#03-13; #04-13; #05-13; #07-13; #08-13;
#09-13; #11-13; #12-13; #13-13; #16-13;
#17-13; #18-13; #20-13; #21-13; #22-13;
#24-13; #25-13; #26-13; #28-13; #29-13;
#30-13; #32-13; #33-13; #34-13; #36-13;
#37-13;



TYPE B1-b
53 sq m / 570 sq ft

#03-09; #04-09; #05-09; #07-09; #08-09;
#09-09; #11-09; #12-09; #13-09; #15-09;
#16-09; #17-09; #20-09; #21-09; #22-09;
#24-09; #25-09; #26-09; #28-09; #29-09;
#30-09; #32-09; #33-09; #34-09; #36-09;
#37-09;

#03-20; #04-20; #05-20; #07-20; #08-20;
#09-20; #11-20; #12-20; #13-20; #16-20;
#17-20; #18-20; #20-20; #21-20; #22-20;
#24-20; #25-20; #26-20; #28-20; #29-20;
#30-20; #32-20; #33-20; #34-20; #36-20;
#37-20;



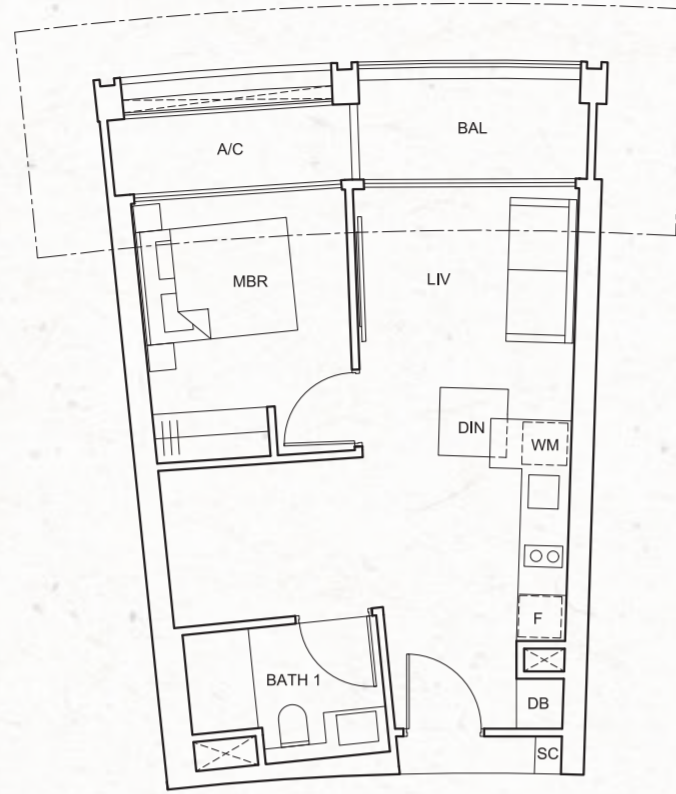
All floor areas indicated are inclusive of AC ledge, planters and balcony where applicable. The plans are subject to change as may be approved by the relevant authorities. All floor plans are approximate measurements only and subject to government re-survey. The balcony shall not be enclosed unless with the approved balcony screen. The installation and cost of the balcony screen shall be borne by the purchaser. For an illustration of the approved balcony screen, please refer to the diagram annexed hereto as "Annexure".

All floor areas indicated are inclusive of AC ledge, planters and balcony where applicable. The plans are subject to change as may be approved by the relevant authorities. All floor plans are approximate measurements only and subject to government re-survey. The balcony shall not be enclosed unless with the approved balcony screen. The installation and cost of the balcony screen shall be borne by the purchaser. For an illustration of the approved balcony screen, please refer to the diagram annexed hereto as "Annexure".

1-BEDROOM

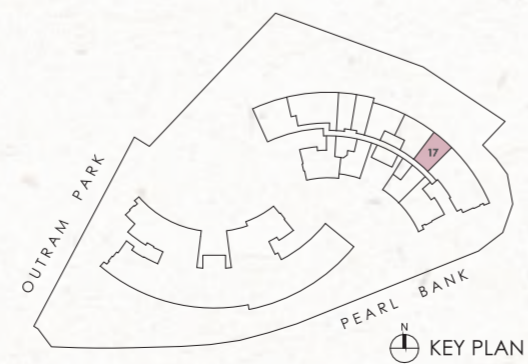
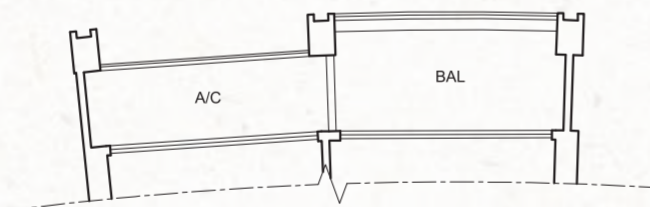
TYPE B4-a
52 sq m / 560 sq ft

#02-17; #06-17; #10-17; #15-17; #19-17;
#23-17; #27-17; #31-17; #35-17



TYPE B4-b
52 sq m / 560 sq ft

#03-17; #04-17; #05-17; #07-17; #08-17;
#09-17; #11-17; #12-17; #13-17; #16-17;
#17-17; #18-17; #20-17; #21-17; #22-17;
#24-17; #25-17; #26-17; #28-17; #29-17;
#30-17; #32-17; #33-17; #34-17; #36-17;
#37-17;



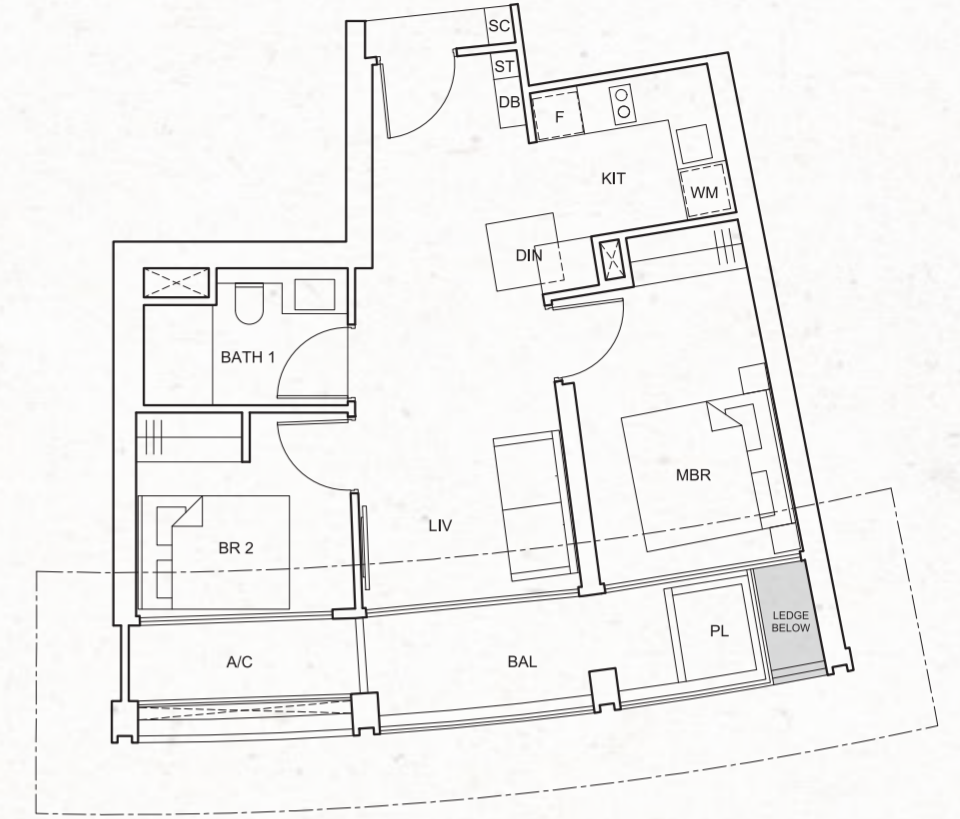
All floor areas indicated are inclusive of AC ledge, planters and balcony where applicable. The plans are subject to change as may be approved by the relevant authorities. All floor plans are approximate measurements only and subject to government re-survey. The balcony shall not be enclosed unless with the approved balcony screen. The installation and cost of the balcony screen shall be borne by the purchaser. For an illustration of the approved balcony screen, please refer to the diagram annexed hereto as "Annexure".

2-BEDROOM

TYPE C1-a
65 sq m / 700 sq ft

#02-04; #06-04; #10-04; #14-04; #19-04;
#23-04; #27-04; #31-04; #35-04;

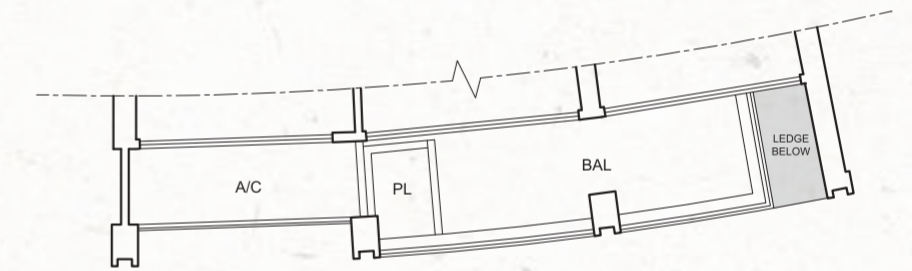
#02-15; #06-15; #10-15; #15-15; #19-15;
#23-15; #27-15; #31-15; #35-15;



TYPE C1-b
65 sq m / 700 sq ft

#03-04; #05-04; #07-04; #09-04; #11-04;
#13-04; #15-04; #17-04; #20-04; #22-04;
#24-04; #26-04; #28-04; #30-04; #32-04;
#34-04; #36-04;

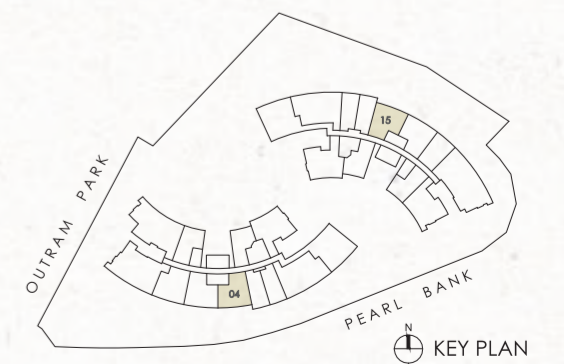
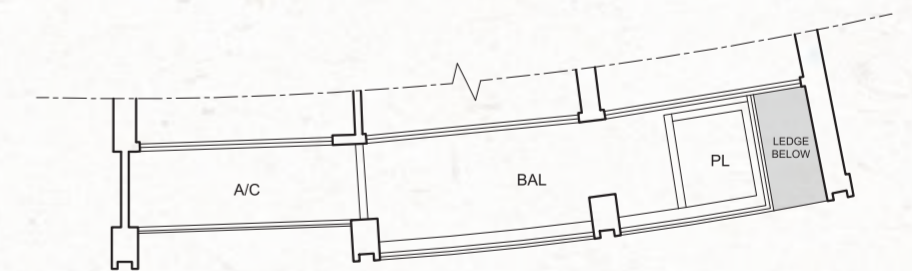
#03-15; #05-15; #07-15; #09-15; #11-15;
#13-15; #16-15; #18-15; #20-15; #22-15;
#24-15; #26-15; #28-15; #30-15; #32-15;
#34-15; #36-15;



TYPE C1-c
65 sq m / 700 sq ft

#04-04; #08-04; #12-04; #16-04; #21-04;
#25-04; #29-04; #33-04; #37-04;

#04-15; #08-15; #12-15; #17-15; #21-15;
#25-15; #29-15; #33-15; #37-15;



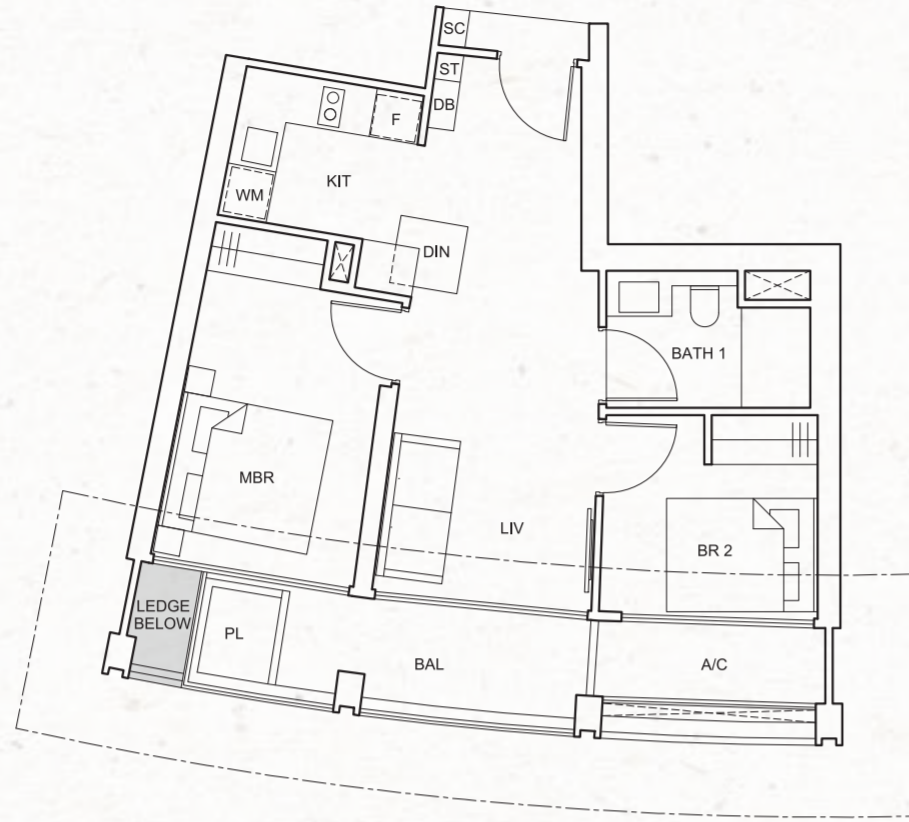
All floor areas indicated are inclusive of AC ledge, planters and balcony where applicable. The plans are subject to change as may be approved by the relevant authorities. All floor plans are approximate measurements only and subject to government re-survey. The balcony shall not be enclosed unless with the approved balcony screen. The installation and cost of the balcony screen shall be borne by the purchaser. For an illustration of the approved balcony screen, please refer to the diagram annexed hereto as "Annexure".

2-BEDROOM

TYPE C1-a (m)
65 sq m / 700 sq ft

#02-05; #06-05; #10-05; #14-05; #19-05;
#23-05; #27-05; #31-05; #35-05;

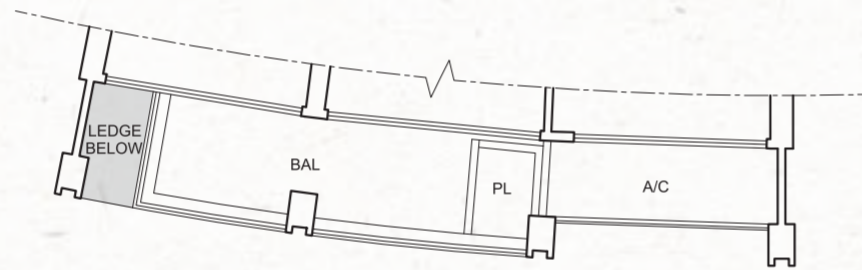
#02-16; #06-16; #10-16; #15-16; #19-16;
#23-16; #27-16; #31-16; #35-16;



TYPE C1-b (m)
65 sq m / 700 sq ft

#03-05; #05-05; #07-05; #09-05; #11-05;
#13-05; #15-05; #17-05; #20-05; #22-05;
#24-05; #26-05; #28-05; #30-05; #32-05;
#34-05; #36-05;

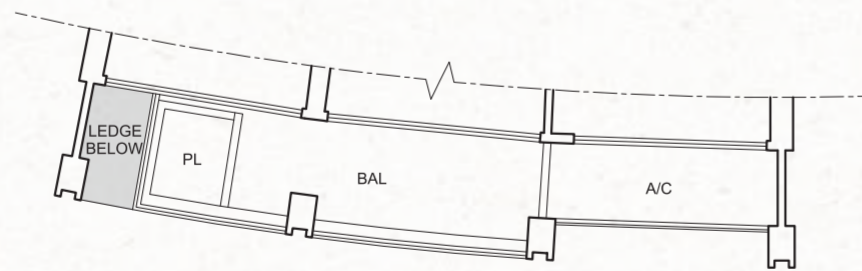
#03-16; #05-16; #07-16; #09-16; #11-16;
#13-16; #16-16; #18-16; #20-16; #22-16;
#24-16; #26-16; #28-16; #30-16; #32-16;
#34-16; #36-16;



TYPE C1-c (m)
65 sq m / 700 sq ft

#04-05; #08-05; #12-05; #16-05; #21-05;
#25-05; #29-05; #33-05; #37-05;

#04-16; #08-16; #12-16; #17-16; #21-16;
#25-16; #29-16; #33-16; #37-16;



All floor areas indicated are inclusive of AC ledge, planters and balcony where applicable. The plans are subject to change as may be approved by the relevant authorities. All floor plans are approximate measurements only and subject to government re-survey. The balcony shall not be enclosed unless with the approved balcony screen. The installation and cost of the balcony screen shall be borne by the purchaser. For an illustration of the approved balcony screen, please refer to the diagram annexed hereto as "Annexure".

2-BEDROOM

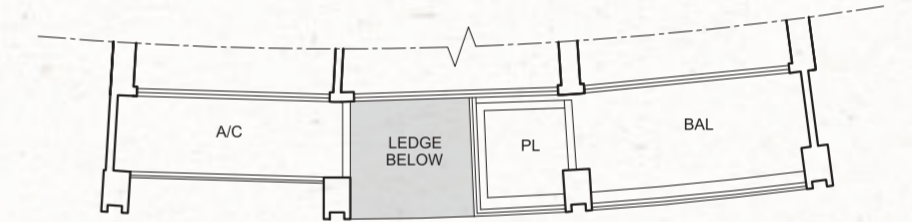
TYPE C2-a
69 sq m / 743 sq ft

#02-06; #06-06; #10-06; #14-06; #19-06;
#23-06; #27-06; #31-06; #35-06



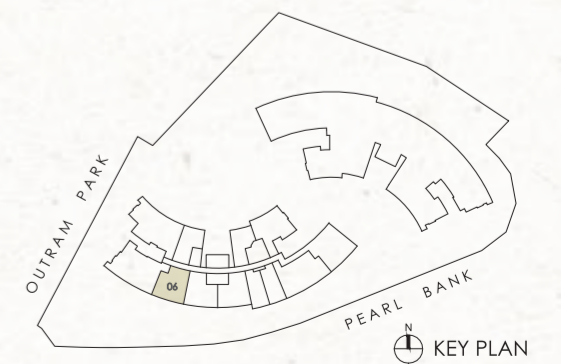
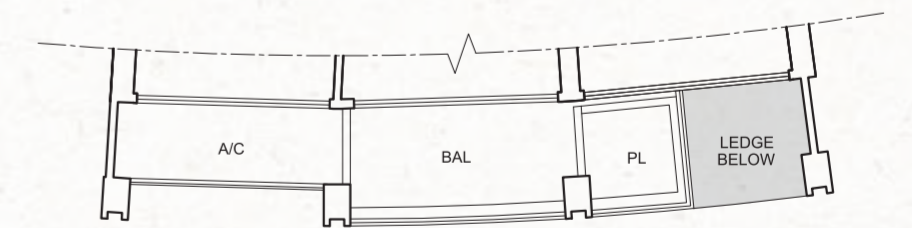
TYPE C2-b
69 sq m / 743 sq ft

#03-06; #05-06; #07-06; #09-06; #11-06;
#13-06; #15-06; #17-06; #20-06; #22-06;
#24-06; #26-06; #28-06; #30-06; #32-06;
#34-06; #36-06



TYPE C2-c
69 sq m / 743 sq ft

#04-06; #08-06; #12-06; #16-06; #21-06;
#25-06; #29-06; #33-06; #37-06



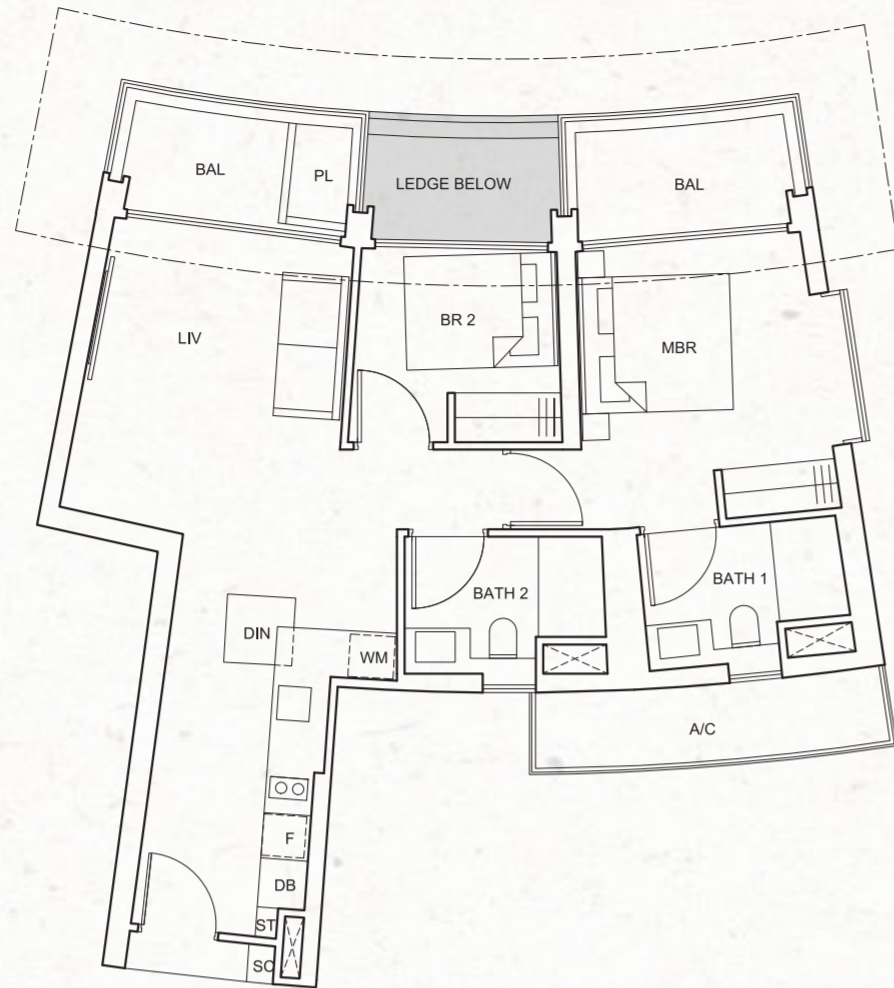
All floor areas indicated are inclusive of AC ledge, planters and balcony where applicable. The plans are subject to change as may be approved by the relevant authorities. All floor plans are approximate measurements only and subject to government re-survey. The balcony shall not be enclosed unless with the approved balcony screen. The installation and cost of the balcony screen shall be borne by the purchaser. For an illustration of the approved balcony screen, please refer to the diagram annexed hereto as "Annexure".

2-BEDROOM

TYPE C3-a
83 sq m / 893 sq ft

#02-11; #06-11; #10-11; #14-11; #19-11;
#23-11; #27-11; #31-11; #35-11;

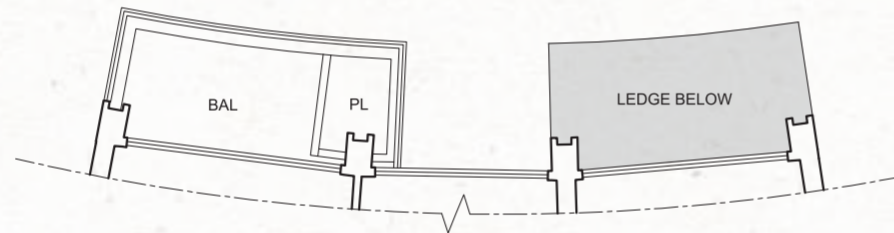
#02-22; #06-22; #10-22; #15-22; #19-22;
#23-22; #27-22; #31-22; #35-22



TYPE C3-b
78 sq m / 840 sq ft

#03-11; #05-11; #07-11; #09-11; #11-11;
#13-11; #15-11; #17-11; #20-11; #22-11;
#24-11; #26-11; #28-11; #30-11; #32-11;
#34-11; #36-11;

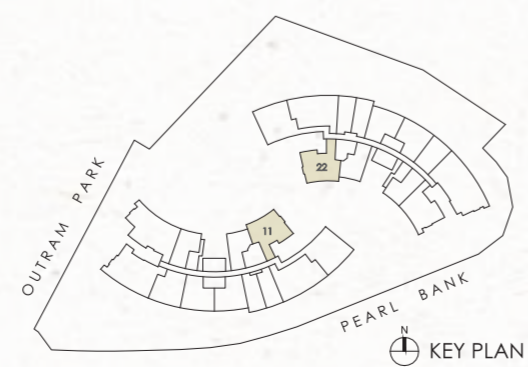
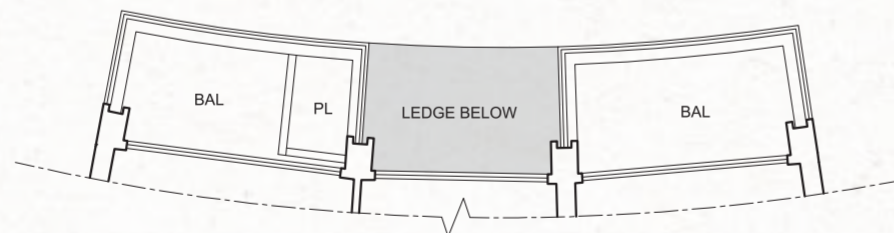
#03-22; #05-22; #07-22; #09-22; #11-22;
#13-22; #16-22; #18-22; #20-22; #22-22;
#24-22; #26-22; #28-22; #30-22; #32-22;
#34-22; #36-22



TYPE C3-c
83 sq m / 893 sq ft

#04-11; #08-11; #12-11; #16-11; #21-11;
#25-11; #29-11; #33-11; #37-11;

#04-22; #08-22; #12-22; #17-22; #21-22;
#25-22; #29-22; #33-22; #37-22

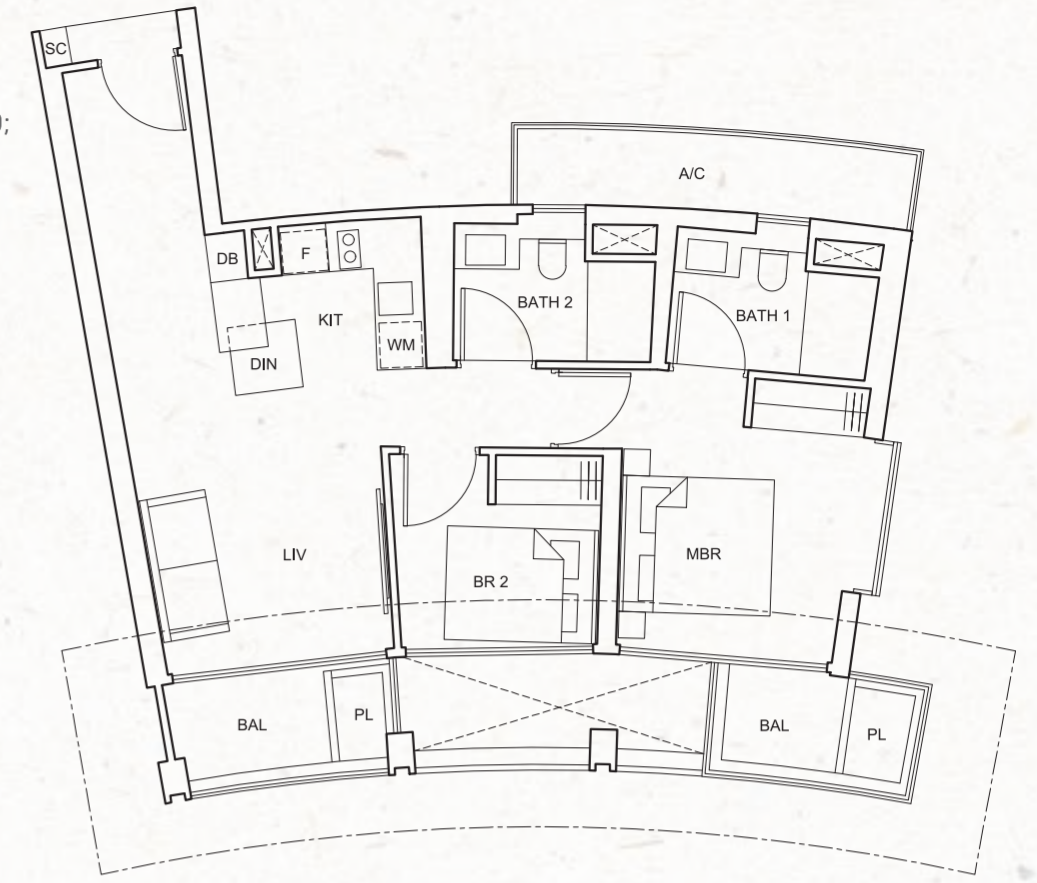


All floor areas indicated are inclusive of AC ledge, planters and balcony where applicable. The plans are subject to change as may be approved by the relevant authorities. All floor plans are approximate measurements only and subject to government re-survey. The balcony shall not be enclosed unless with the approved balcony screen. The installation and cost of the balcony screen shall be borne by the purchaser. For an illustration of the approved balcony screen, please refer to the diagram annexed hereto as "Annexure".

2-BEDROOM

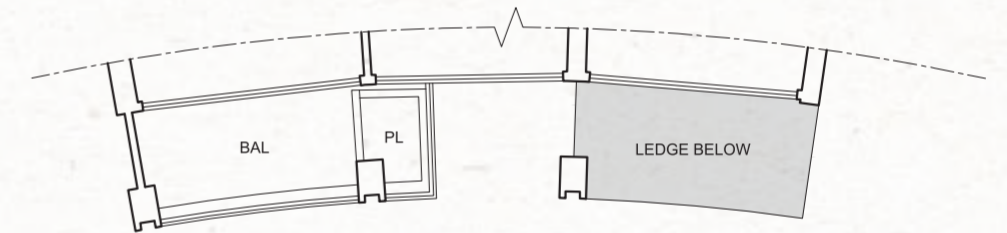
TYPE C4-a
78 sq m / 840 sq ft

#02-19; #06-19; #10-19; #15-19; #19-19;
#23-19; #27-19; #31-19; #35-19



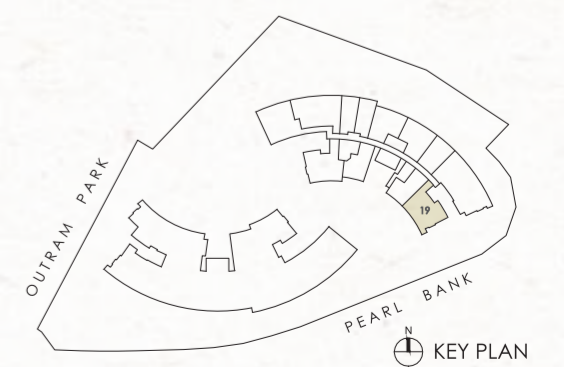
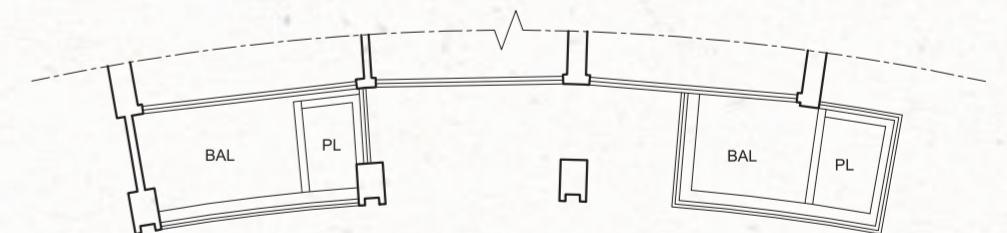
TYPE C4-b
75 sq m / 807 sq ft

#03-19; #05-19; #07-19; #09-19; #11-19;
#13-19; #16-19; #18-19; #20-19; #22-19;
#24-19; #26-19; #28-19; #30-19; #32-19;
#34-19; #36-19



TYPE C4-c
78 sq m / 840 sq ft

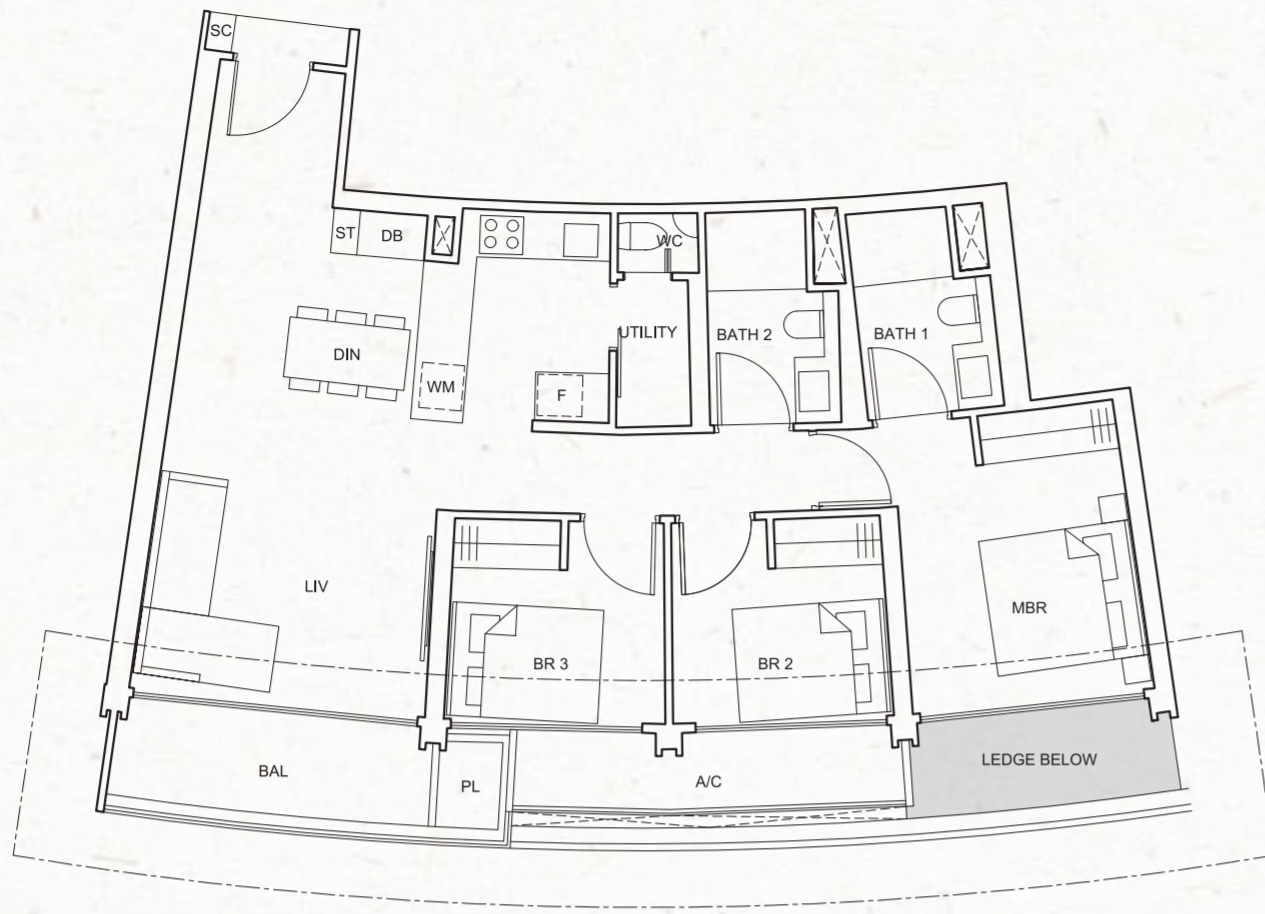
#04-19; #08-19; #12-19; #17-19; #21-19;
#25-19; #29-19; #33-19; #37-19



All floor areas indicated are inclusive of AC ledge, planters and balcony where applicable. The plans are subject to change as may be approved by the relevant authorities. All floor plans are approximate measurements only and subject to government re-survey. The balcony shall not be enclosed unless with the approved balcony screen. The installation and cost of the balcony screen shall be borne by the purchaser. For an illustration of the approved balcony screen, please refer to the diagram annexed hereto as "Annexure".

3-BEDROOM

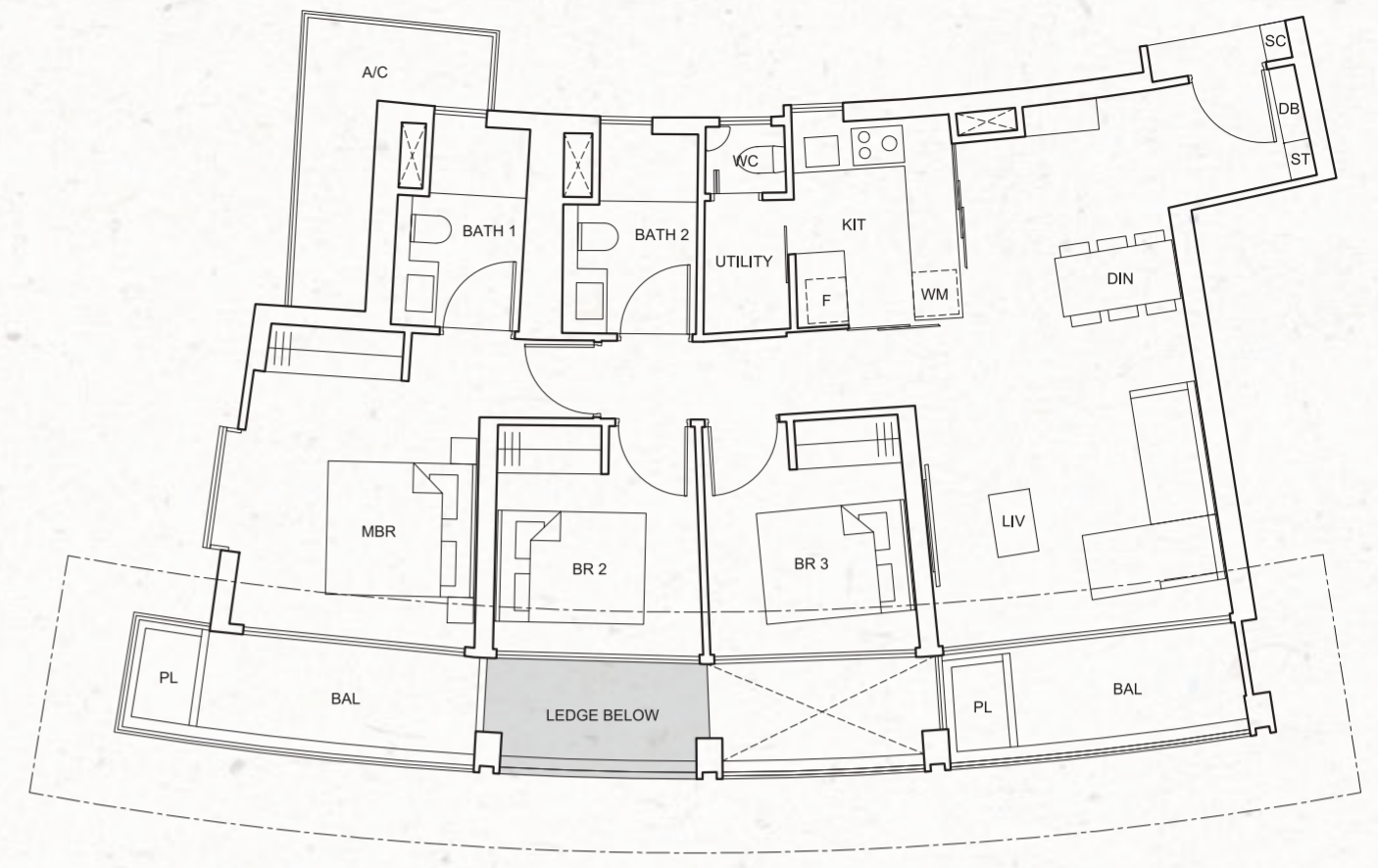
3-BEDROOM



TYPE D1-a
102 sq m / 1,098 sq ft

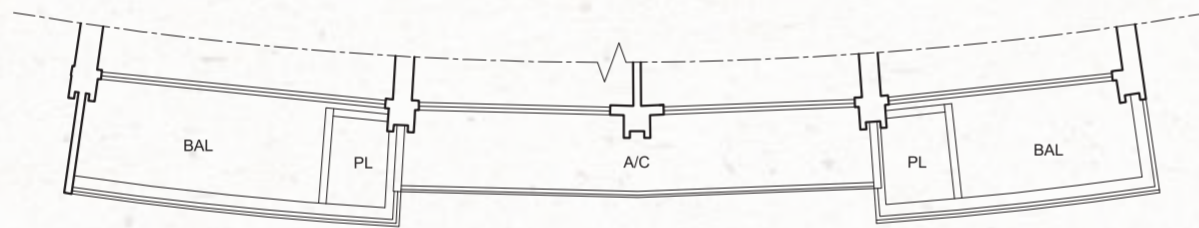
#02-01; #06-01; #10-01; #14-01; #19-01;
#23-01; #27-01; #31-01; #35-01;

#02-12; #06-12; #10-12; #15-12; #19-12;
#23-12; #27-12; #31-12; #35-12



TYPE D2-a
113 sq m / 1,216 sq ft

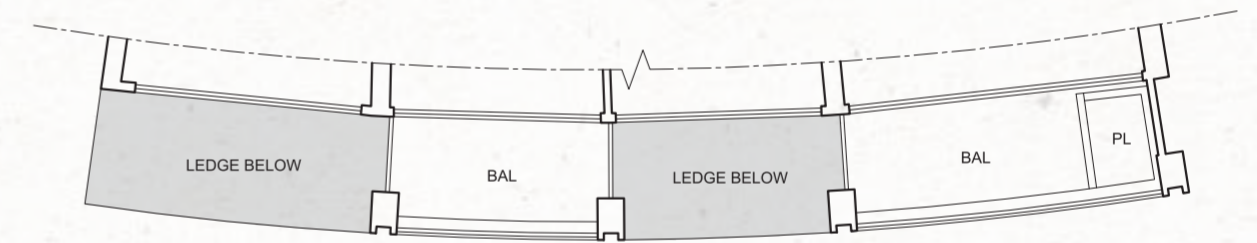
#02-07; #06-07; #10-07; #14-07; #19-07;
#23-07; #27-07; #31-07; #35-07



TYPE D1-b
107 sq m / 1,152 sq ft

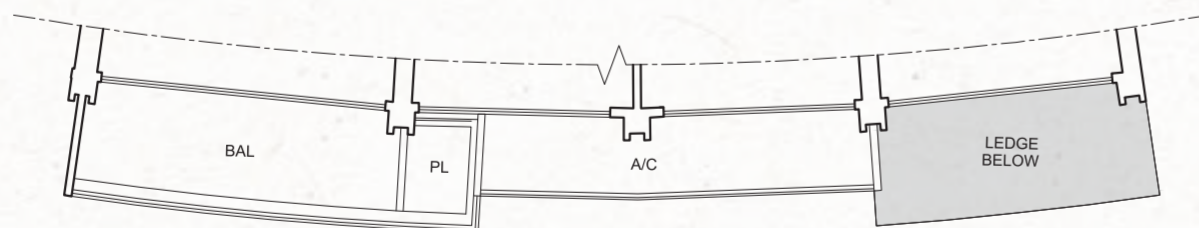
#03-01; #05-01; #07-01; #09-01; #11-01;
#13-01; #15-01; #17-01; #20-01; #22-01;
#24-01; #26-01; #28-01; #30-01; #32-01;
#34-01; #36-01;

#03-12; #05-12; #07-12; #09-12; #11-12;
#13-12; #16-12; #18-12; #20-12; #22-12;
#24-12; #26-12; #28-12; #30-12; #32-12;
#34-12; #36-12



TYPE D2-b
110 sq m / 1,184 sq ft

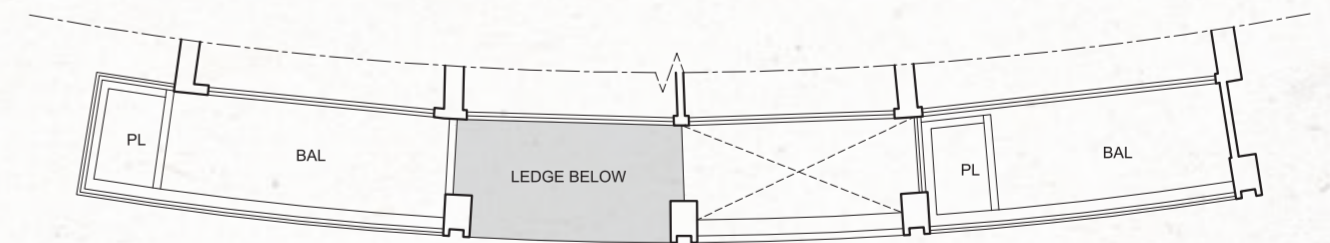
#03-07; #05-07; #07-07; #09-07; #11-07;
#13-07; #15-07; #17-07; #20-07; #22-07;
#24-07; #26-07; #28-07; #30-07; #32-07;
#34-07; #36-07



TYPE D1-c
102 sq m / 1,098 sq ft

#04-01; #08-01; #12-01; #16-01; #21-01;
#25-01; #29-01; #33-01; #37-01;

#04-12; #08-12; #12-12; #17-12; #21-12;
#25-12; #29-12; #33-12; #37-12



TYPE D2-c
113 sq m / 1,216 sq ft

#04-07; #08-07; #12-07; #16-07; #21-07;
#25-07; #29-07; #33-07; #37-07

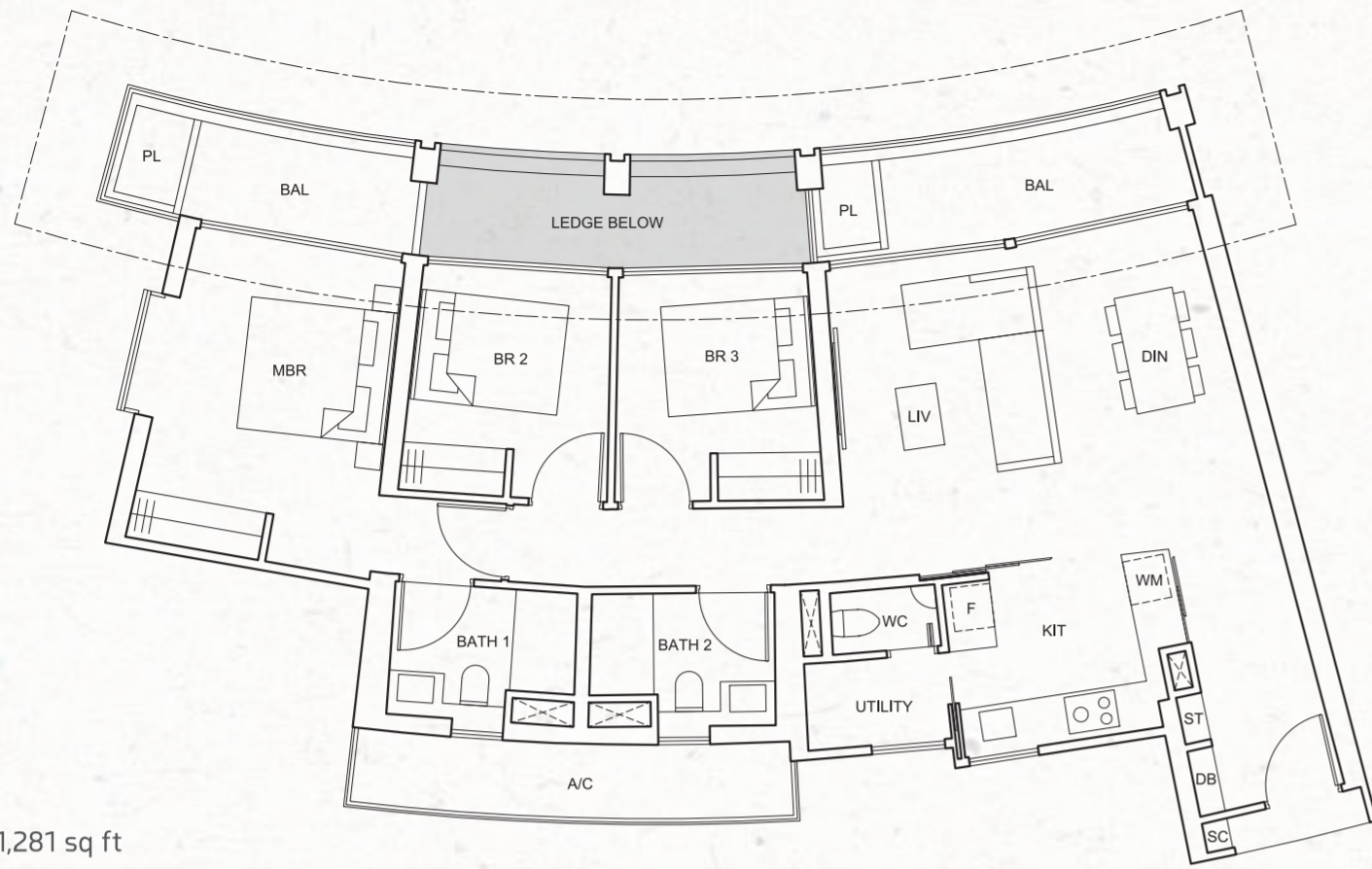


All floor areas indicated are inclusive of AC ledge, planters and balcony where applicable. The plans are subject to change as may be approved by the relevant authorities. All floor plans are approximate measurements only and subject to government re-survey. The balcony shall not be enclosed unless with the approved balcony screen. The installation and cost of the balcony screen shall be borne by the purchaser. For an illustration of the approved balcony screen, please refer to the diagram annexed hereto as "Annexure".

All floor areas indicated are inclusive of AC ledge, planters and balcony where applicable. The plans are subject to change as may be approved by the relevant authorities. All floor plans are approximate measurements only and subject to government re-survey. The balcony shall not be enclosed unless with the approved balcony screen. The installation and cost of the balcony screen shall be borne by the purchaser. For an illustration of the approved balcony screen, please refer to the diagram annexed hereto as "Annexure".

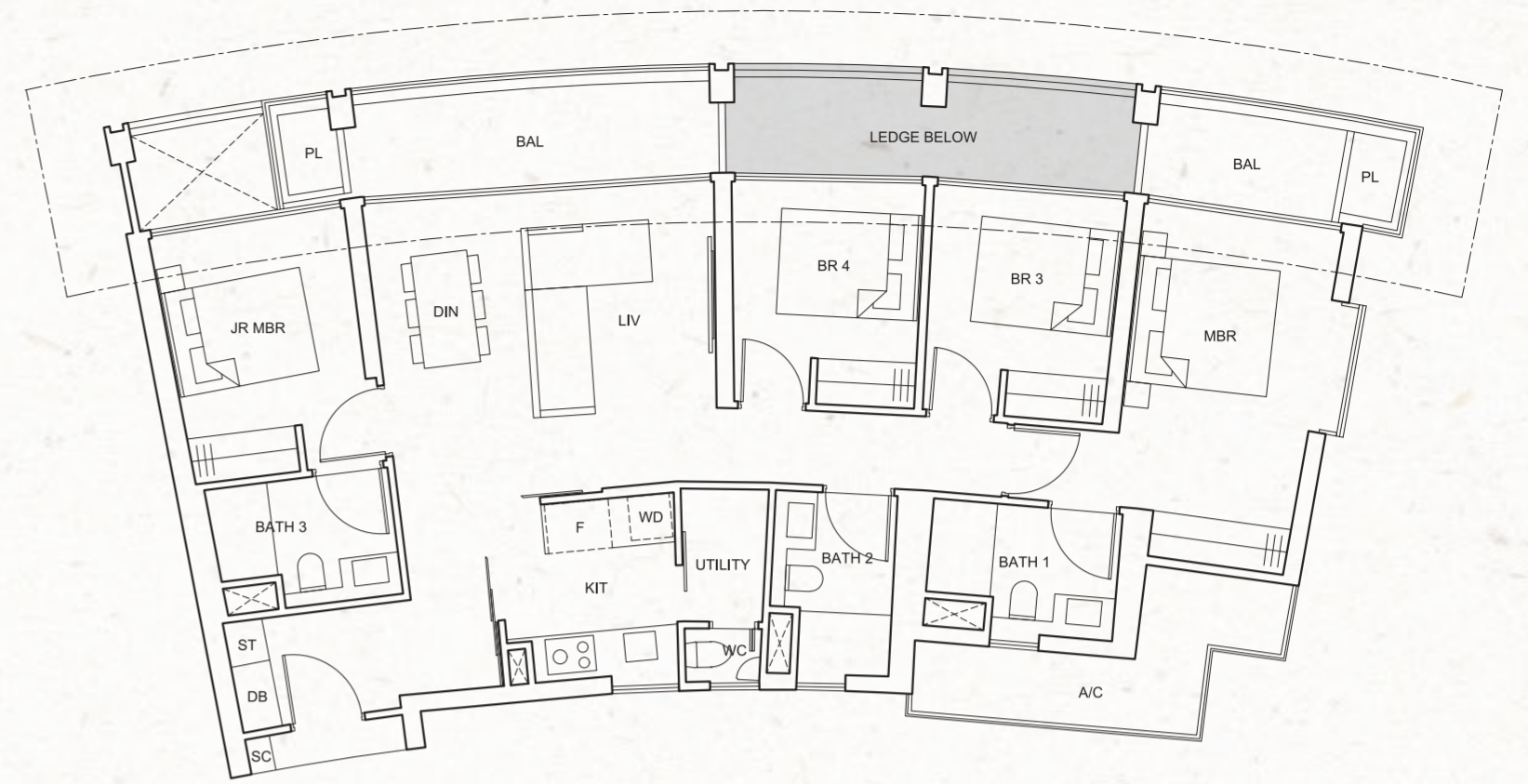
3-BEDROOM

4-BEDROOM



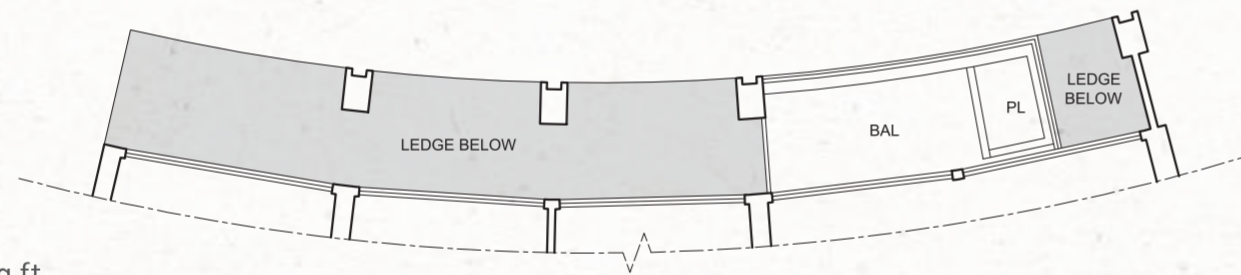
TYPE D3-a
119 sq m / 1,281 sq ft

#02-08; #06-08; #10-08; #14-08; #19-08;
#23-08; #27-08; #31-08; #35-08



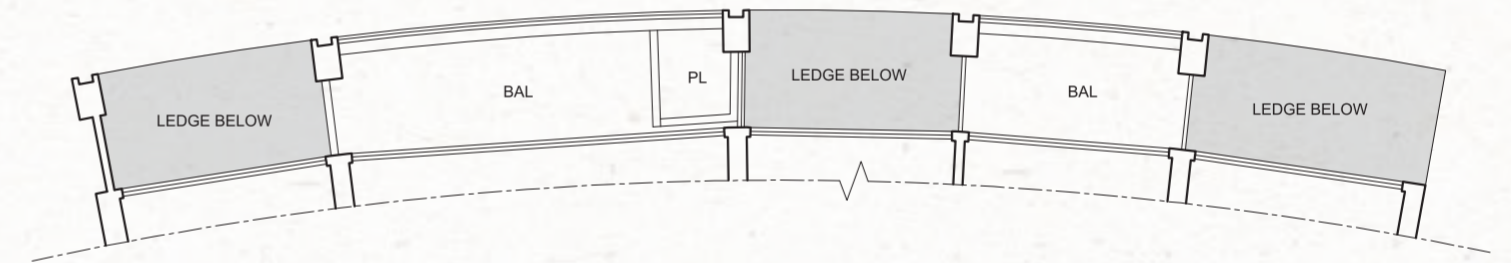
TYPE E1-a
133 sq m / 1,432 sq ft

#02-18; #06-18; #10-18; #15-18; #19-18;
#23-18; #27-18; #31-18; #35-18



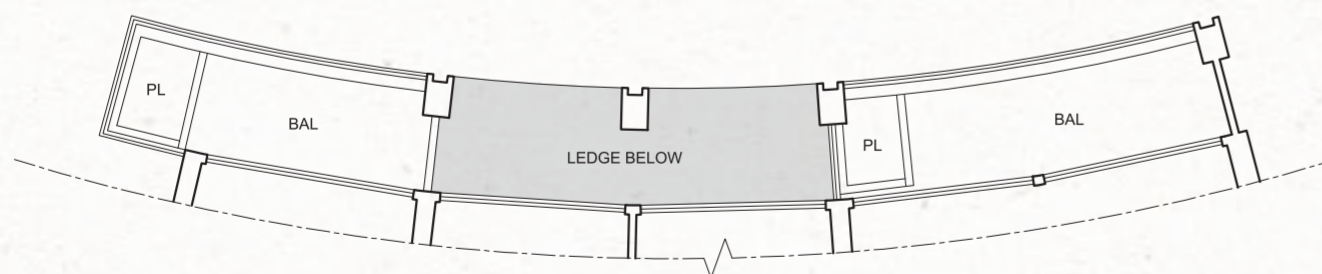
TYPE D3-b
111 sq m / 1,195 sq ft

#03-08; #05-08; #07-08; #09-08; #11-08;
#13-08; #15-08; #17-08; #20-08; #22-08;
#24-08; #26-08; #28-08; #30-08; #32-08;
#34-08; #36-08



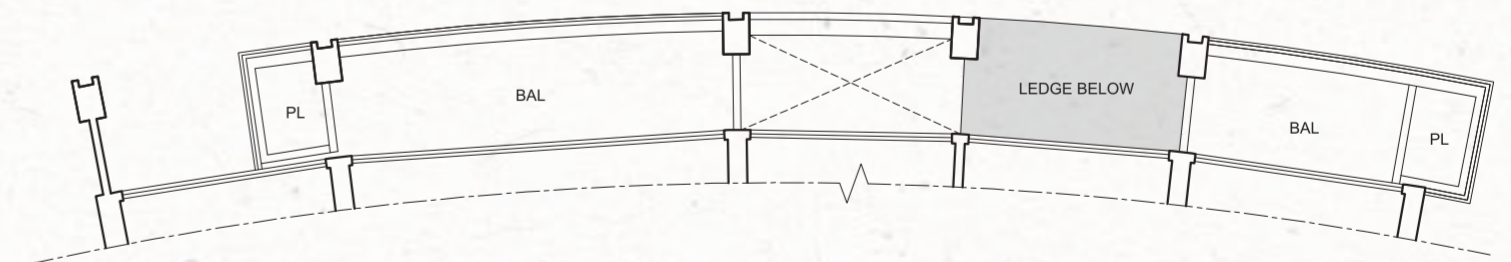
TYPE E1-b
130 sq m / 1,399 sq ft

#03-18; #05-18; #07-18; #09-18; #11-18;
#13-18; #16-18; #18-18; #20-18; #22-18;
#24-18; #26-18; #28-18; #30-18; #32-18;
#34-18; #36-18



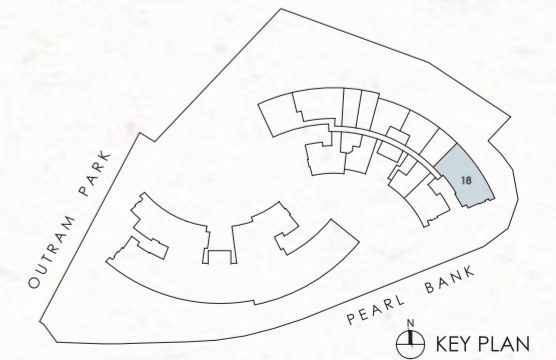
TYPE D3-c
119 sq m / 1,281 sq ft

#04-08; #08-08; #12-08; #16-08; #21-08;
#25-08; #29-08; #33-08; #37-08



TYPE E1-c
133 sq m / 1,432 sq ft

#04-18; #08-18; #12-18; #17-18; #21-18;
#25-18; #29-18; #33-18; #37-18



All floor areas indicated are inclusive of AC ledge, planters and balcony where applicable. The plans are subject to change as may be approved by the relevant authorities. All floor plans are approximate measurements only and subject to government re-survey. The balcony shall not be enclosed unless with the approved balcony screen. The installation and cost of the balcony screen shall be borne by the purchaser. For an illustration of the approved balcony screen, please refer to the diagram annexed hereto as "Annexure".

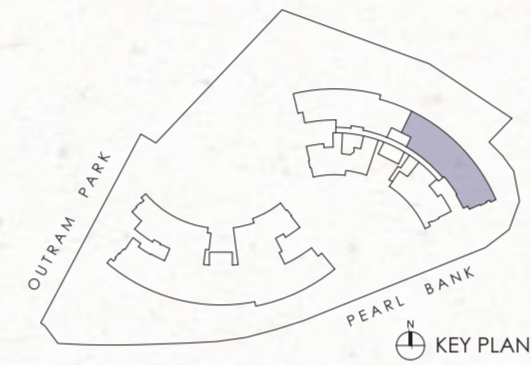
All floor areas indicated are inclusive of AC ledge, planters and balcony where applicable. The plans are subject to change as may be approved by the relevant authorities. All floor plans are approximate measurements only and subject to government re-survey. The balcony shall not be enclosed unless with the approved balcony screen. The installation and cost of the balcony screen shall be borne by the purchaser. For an illustration of the approved balcony screen, please refer to the diagram annexed hereto as "Annexure".



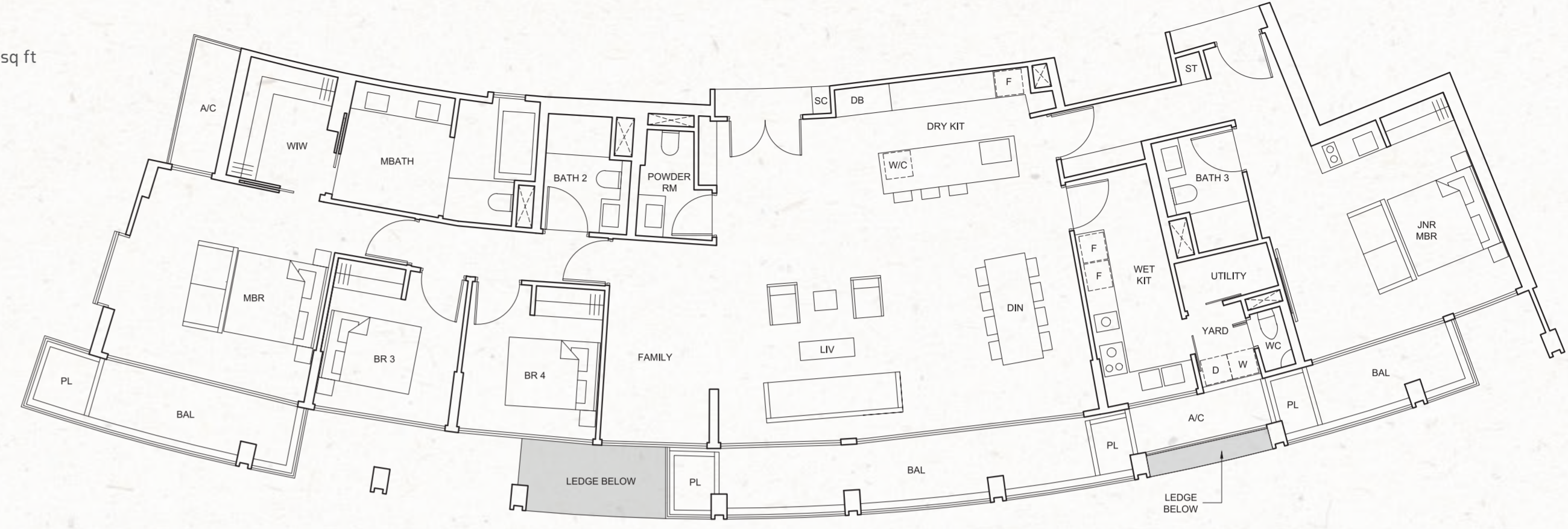
PENTHOUSE
PLANS

PENTHOUSE

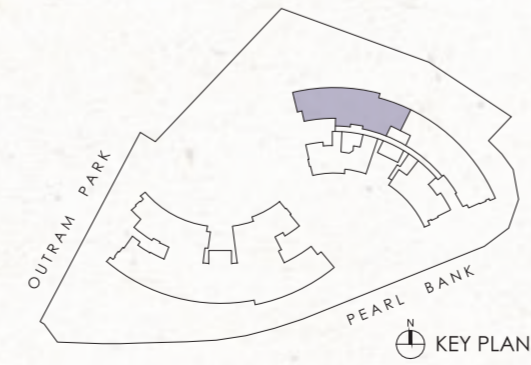
TYPE F1
250 sq m / 2,691 sq ft
#38-18



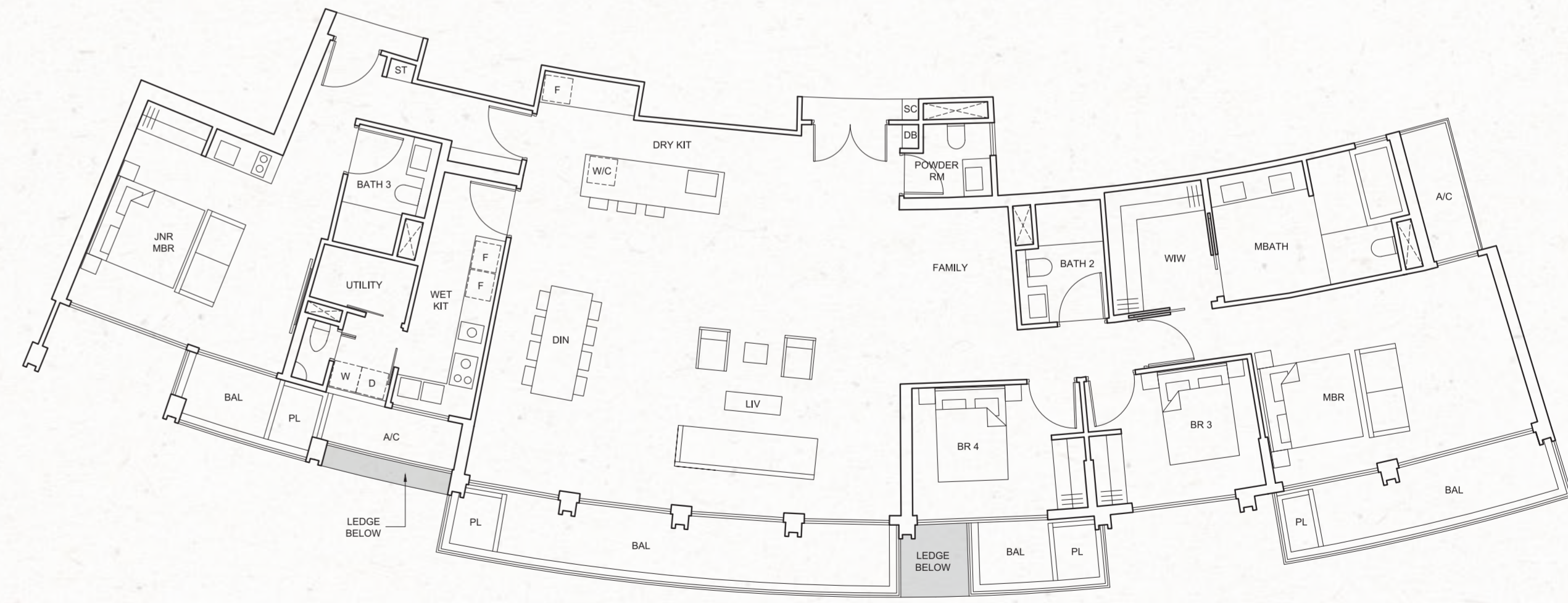
TYPE F3
244 sq m / 2,626 sq ft
#38-06



TYPE F2
259 sq m / 2,788 sq ft
#38-13



TYPE F4
258 sq m / 2,777 sq ft
#38-02

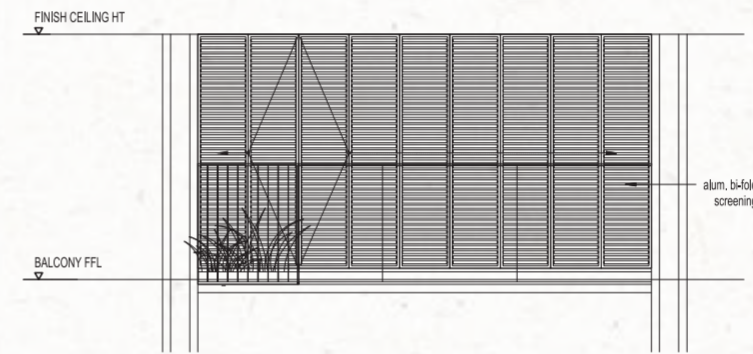


All floor areas indicated are inclusive of AC ledge, planters and balcony where applicable. The plans are subject to change as may be approved by the relevant authorities. All floor plans are approximate measurements only and subject to government re-survey. The balcony shall not be enclosed unless with the approved balcony screen. The installation and cost of the balcony screen shall be borne by the purchaser. For an illustration of the approved balcony screen, please refer to the diagram annexed hereto as "Annexure".

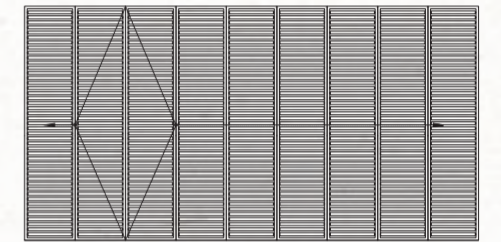
All floor areas indicated are inclusive of AC ledge, planters and balcony where applicable. The plans are subject to change as may be approved by the relevant authorities. All floor plans are approximate measurements only and subject to government re-survey. The balcony shall not be enclosed unless with the approved balcony screen. The installation and cost of the balcony screen shall be borne by the purchaser. For an illustration of the approved balcony screen, please refer to the diagram annexed hereto as "Annexure".

APPROVED BALCONY SCREEN

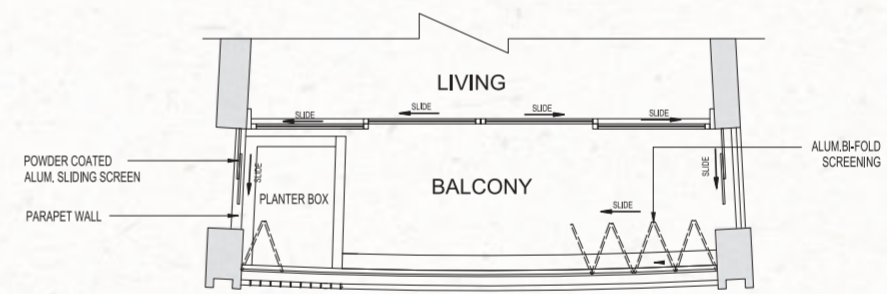
ANNEXURE



TYPICAL ELEVATION OF BALCONY WITH SCREEN



TYPICAL ELEVATION - BALCONY SCREEN



TYPICAL PLAN WITH BALCONY SCREEN

LEGEND :

Wall not allowed to be hacked or altered

Note:

1. The balcony shall not be enclosed unless with the approved balcony screen.
2. The proposed balcony screens allow for natural ventilation within the balcony at all times.
3. The installation and cost of the screen shall be borne by the Purchaser.



