



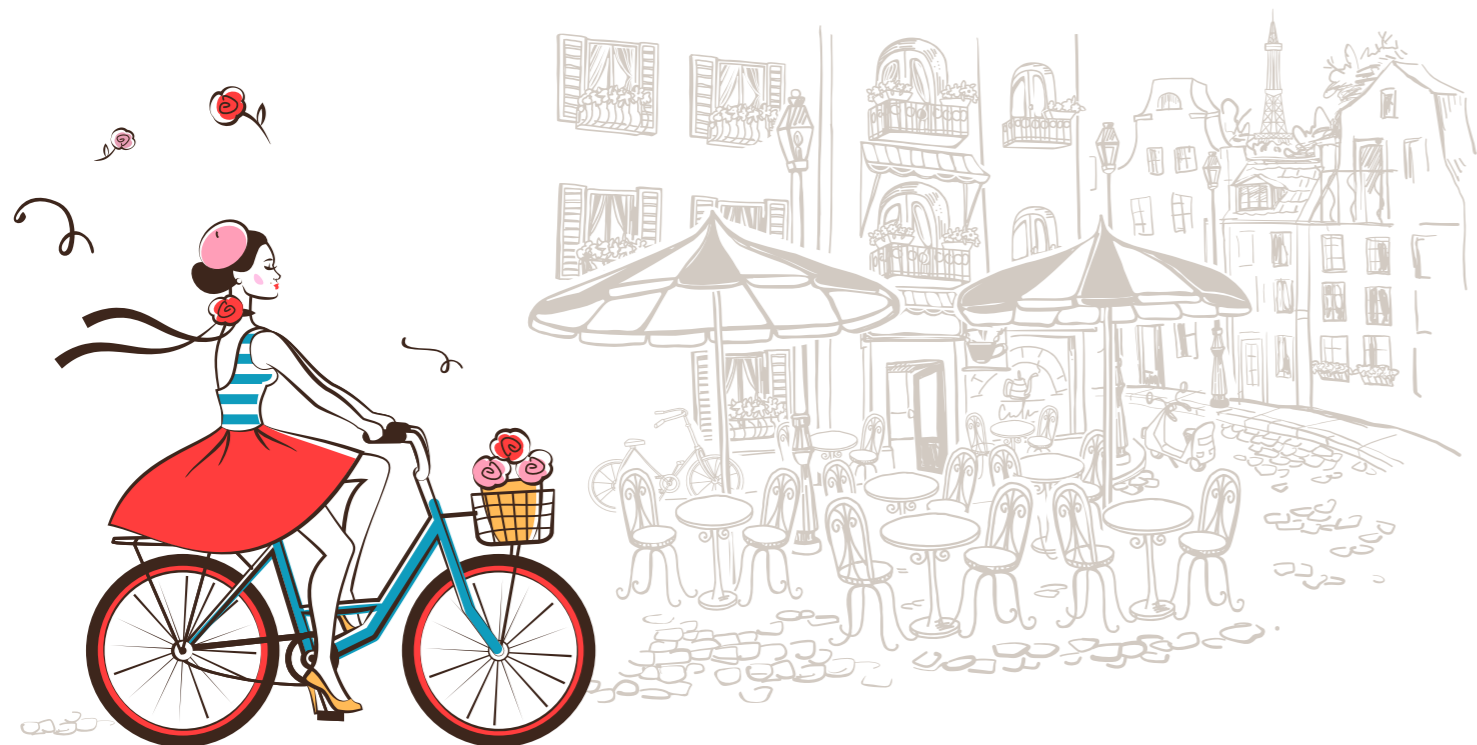
PROVENCE  
RESIDENCE



GO WITH YOUR HEART AND  
JOY WILL FOLLOW



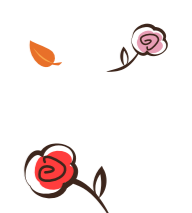
Artist's Impression



## *Bienvenue*

Welcome to a life of  
French-inspired elegance and beauty

Exuding effortless chic with modern simplicity, Provence Residence is where you are surrounded by subtle charm at every turn. It is an abode where you can repose among nature and rejuvenate in style with your loved ones. Come home to the lifestyle that you've always desired at Provence Residence.

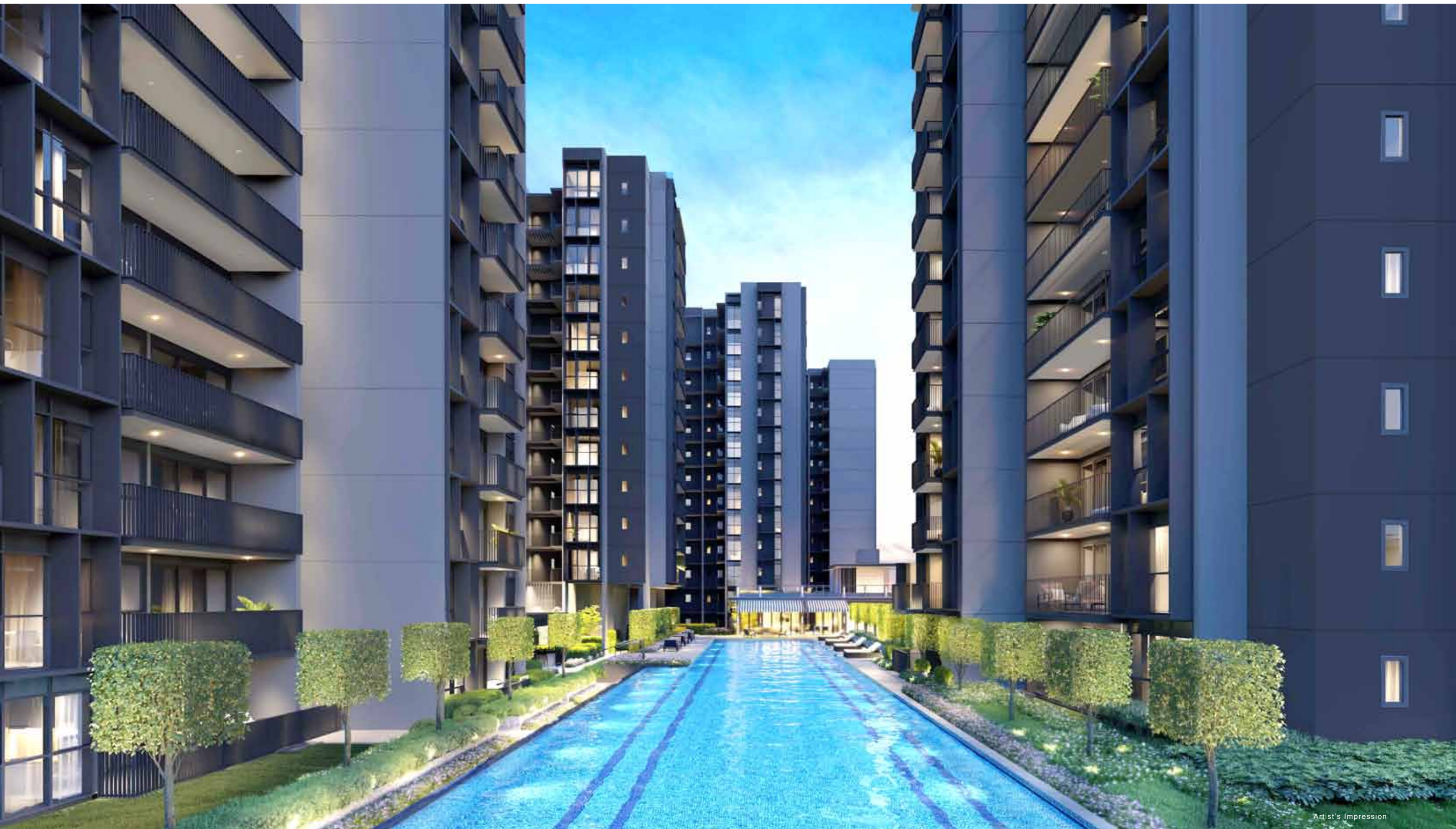




# Bonjour!

Say hello to French elegance  
and contemporary styling

Provence Residence is about serving up the finer things in life. Nestled within a landscape of lush architectural symmetry that's distinctively and contemporarily French. Take a dip in a 50m crystal clear swimming pool, before retreating to designer comforts in the adjacent pavilions.





Artist's Impression



The French have a saying for the appreciation and enjoyment of life.

## *Joie de Vivre*

Taking time to smell the flowers will become second nature at Provence Residence with its Romance Court. Blooming with carefully selected flora, complemented by expertly designed open spaces with soothing water features and strategic outdoor seating, it's quite literally a walk in the park - right at your own doorstep.





Artist's Impression



A place where friends bond, romance blossoms and families thrive is simply

*Magnifique*

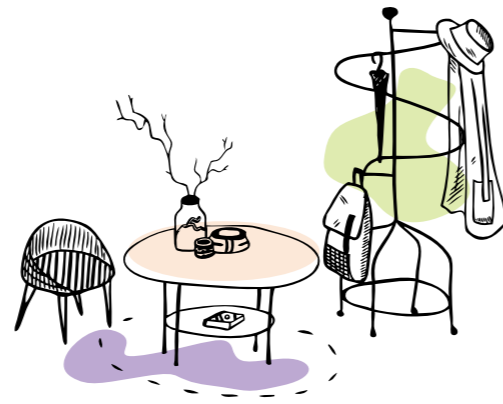
If connection is the spice of life, bring it to elevated heights at the Sky Lounge, where you and your friends can chill out to drinks and intimate chit-chat while taking in the lush skyline and glistening pool below. For spirited barbecues and parties, the Dining Pavilion, Chill Out Lawn and Alfresco Dining Pavilion will welcome you and your guests with sheltered security in outdoor settings.



## Elegance is when the interior of your home is as beautiful as the exterior

French flair continues to grace the interiors at Provence Residence. French-inspired glass details, symmetrical panelling and detailing gorgeously crafted with luxurious materials in a select palette of black, grey and white accents. It's an abode designed with you in mind.

Feel at home at Provence Residence.





## Quality is an investment in the future

There's no investment that you could luxuriate in so intimately when you come home to Provence Residence. From the chic functionality of kitchen solutions to sleek modernity of bathroom fittings from prestigious Swiss names such as Axent and Franke, cooking, entertaining or simply winding down with those you love become stylish pleasures.

**AXENT**  
SWITZERLAND

**FRANKE**





# A DYNAMIC GROWTH REGION WITH ABUNDANT OPPORTUNITIES

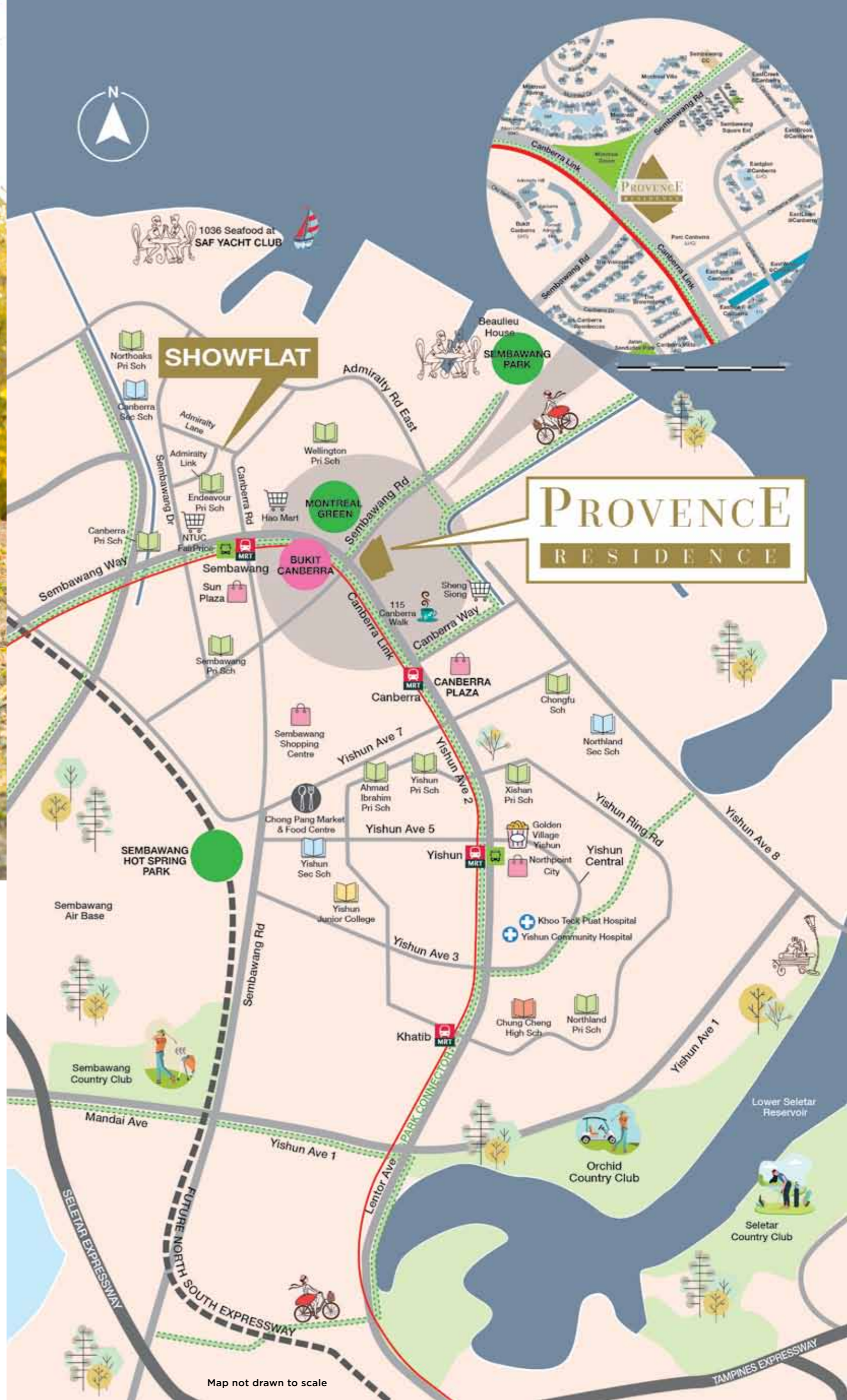


## PROVENCE RESIDENCE



- MRT STATION
- BUS INTERCHANGE
- PARK CONNECTOR
- NORTH COAST INNOVATION CORRIDOR
- COMMUNITY HUB
- PARK
- BUSINESS HUB
- RECREATION
- SHOPPING MALL

Map not drawn to scale



### Thrive in the heart of an exciting, connected region.

Provence Residence is well-connected, with the Canberra MRT just 7-minute walk and the SLE-BKE 12-minute drive away. Everyday conveniences are within easy reach. Market, malls, food centre, parks are just minutes walk away, 1 MRT stop or a short drive away. In the near future, you can look forward to enjoying the mega Mandai Wildlife Park and Bukit Canberra. Fast taking shape along the coast is the North Coast Innovation Corridor envisioned as an exciting new economic zone where new ideas and innovations converge bringing high value job opportunities to the region.



Map not drawn to scale

# FAQ Answered

## All your needs within easy reach



### WHERE IS THE NEAREST HEALTHCARE?

- Khoo Teck Puat Hospital - **6 mins drive**
- Yishun Community Hospital - **6 mins drive**
- Woodlands Health Campus - **12 mins drive**

### WHAT ARE THE AVAILABLE NATURE SPACES FOR MY KIDS?

- Bukit Canberra - **5 mins drive**



### IS THERE WET MARKET OR FOOD CENTRES NEARBY?

- Chong Pang Market & Food Centre - **7 mins drive**



Canberra Plaza



### WHICH IS THE NEAREST MRT STATION?

- Canberra MRT Station - **7 mins walk**  
(Conveniently connected by a footbridge to Canberra Plaza, a 3-storey, 120,000 sqft new generation neighbourhood centre with commercial and communal amenities)

### WHICH SCHOOLS ARE LOCATED IN THE NEIGHBOURHOOD?

- **Within 1 km**
  - Sembawang Primary School
  - Wellington Primary School
- **Within 2 km**
  - Ahmad Ibrahim Primary School
  - Canberra Primary School
  - Chongfu School
  - Endeavour Primary School
  - Northoaks Primary School
  - Xishan Primary School
  - Yishun Primary School



### WHERE IS THE NEAREST CINEMA TO WATCH A MOVIE?

- Golden Village Yishun - **1 MRT stop**



### ANY NEARBY SUPERMARKETS?

- NTUC FairPrice, Canberra Plaza - **7 mins walk**
- Sheng Siong Supermarket, Canberra Street (24 hrs) - **8 mins walk**
- Giant, Sembawang Shopping Centre - **3 mins drive**
- NTUC FairPrice, Northpoint City - **5 mins drive**
- Cold Storage, Northpoint City - **5 mins drive**
- NTUC FairPrice, Sun Plaza - **5 mins drive**
- NTUC FairPrice, Sembawang Way (24 hrs) - **6 mins drive**



### WHERE CAN I GO FOR SEAFRONT DINING EXPERIENCES?

- Beaulieu House, Sembawang Park - **4 mins drive**
- 1036 Seafood Dining at SAF Yacht Club - **8 mins drive**



### WHICH ARE THE NEARBY SHOPPING MALLS?

- Sembawang Shopping Centre - **4 mins drive**
- Sun Plaza - **5 mins drive**





Canberra Plaza - 7 mins walk



Sembawang Park - 4 mins drive



## Stay close to all the things you love

Just 7-minute walk away and directly connected to Canberra MRT is Canberra Plaza, with 70 shops and restaurants including popular names like BreadTalk,

Starbucks, McDonald's, KFC, A&W and Daiso.

With a community plaza, learning spaces and a water play park, it is the perfect place for kids to learn, play and grow.



Montreal Green - 2 mins walk



Sembawang Hot Spring Park - 4 mins drive



**THE LARGEST GYM  
IN SINGAPORE**  
spanning across 1,500 sqm



**SWIMMING POOLS**  
A 6-lane sheltered pool, an 8-lane  
lap pool & a wading pool



**SPORTS HALL**  
500-seat gallery for sports like  
basketball & badminton



**COMMUNITY GARDEN**  
Shaped around existing terrains are  
Therapeutic Gardens, Butterfly Gardens  
& a Sunken Garden.



**POLYCLINIC AND  
SENIOR CARE**  
Providing a range of health &  
social care for seniors



**'FOOD FOREST' AND  
'FRUIT ORCHARD'**  
Showcase a variety of fruit trees  
& plants



**HAWKER CENTRE**  
700-seat Hawker Centre  
in a park-like environment



**RUNNING TRAILS**  
3 km trail through different  
landscapes that provide a range  
of experiences.



# Live Inspired Bukit Canberra

Combining sports facilities with nature, Bukit Canberra will cover an area of about 20 football fields. Here is what you can enjoy as the hub opens progressively from 2021. Bukit Canberra features - The largest gym in Singapore; Indoor & outdoor swimming pools; A 500-seat indoor sports hall; 3 kilometers of outdoor running trails; 'Food Forest' and 'Fruit Orchard'; A community garden; Hawker Centre; and Polyclinic.



# Explore the Wild Side

## Mandai Wildlife Park



Just a short drive away, an enriching mega multi-park experience is in the making. The 5-in-1 precinct includes the Singapore Zoo, Night Safari and River Safari, promising visitors an amazing journey of discovery and adventure. The Bird Park will also be relocated to the Mandai Wildlife Park, with enough space for interactive exhibits where birds roam freely. There will be a public boardwalk and nature trail that is free of charge. Using the boardwalk, you can enjoy a panoramic view of the Night Safari and River Safari.





Source: JTC

# Future Ready North Coast Innovation Corridor

The North Coast Innovation Corridor is envisioned as an exciting new economic zone where new ideas and innovations converge, bringing high value job opportunities to the region. This corridor covers Woodlands Regional Centre and stretches across the redeveloped Sembawang Shipyard to the future Seletar Regional Centre and Punggol Digital District. Provence Residence is well positioned to benefit from the abundant opportunities from this fast-growing corridor.



Source: JTC

## WOODLANDS REGIONAL CENTRE

This will eventually become the largest economic hub in Singapore's northern region. Over the next 15 years, new spaces for business, industry, research & development and learning & innovation will be introduced to Woodlands Regional Centre. Connected to key locations in Singapore and Johor Bahru, it will serve as the strategic centre for the Northern Agri-tech and Food Corridor.

## JTC FOOD HUB @ SENOKO FOOD ZONE

The JTC Food Hub @ Senoko Food Zone clusters SMEs from the food sector in a seven storey hub. This supports Singapore's food industry and provides local job opportunities.



Source: JTC



Source: JTC

## WOODLANDS NORTH COAST

Situated at the waterfront, the upcoming Woodlands North Coast precinct will be a vibrant mixed-use precinct that will connect people, places and business. Flexible industrial spaces designed by JTC will allow for businesses to easily pursue both knowledge-intensive activities and light manufacturing operations.



## SELETAR AEROSPACE PARK

JTC's Seletar Aerospace Park supports Singapore's vision to become a global aviation hub. Opening job opportunities in the region, it is home to a vibrant aerospace industry cluster of over 60 MNCs and local aerospace enterprises. A new lifestyle enclave, The Oval, has also grown organically from old colonial houses, with restaurants, shops, spas, and the occasional bazaars and carnivals thriving in the Park.



Source: JTC



## SEMBAWANG SHIPYARD RELOCATION

Sembawang shipyard's relocation in 2024 presents opportunities for development of a lifestyle precinct in the future. You can look forward to exciting new recreational activities once the Sembawang Shipyard is redeveloped into a mixed-use waterfront lifestyle precinct. With its rich maritime history and unique coastal profile, the shipyard presents opportunities for new waterfront public spaces.

## PUNGGOL DIGITAL DISTRICT

Developed by JTC, Punggol Digital District will be Singapore's first truly smart district, housing the key growth industries of the digital economy like cyber security and digital technology. It is envisioned to be a green community playground, a vibrant economic & learning hub and pilot enterprise district, with shared spaces between industrial and academic enterprises.



Source: JTC

## SITE/FACILITIES

### 1ST LEVEL

#### ROYAL FRENCH COURT

##### Bonjour

1. Entryway
2. Arrival Court
3. Arrival Water Feature
4. Arrival Drop Off
5. Arrival Waiting Area
6. Cascading Water Feature

##### Jardin d'eau

7. Arrival Spring
8. Family Pool
9. Kid Pool
10. Jet Pool
11. Family Deck
12. Overflow Water Feature
13. Gym Room
14. Changing Room
15. Steam Room
16. Reflective Water Feature
17. Learning Zone
18. Entertainment Zone
19. Function Room
20. Lounge Deck
21. Sun Lounge
22. 50m Lap Pool
23. Topiary Walk
24. Romance Square
25. Romance Court
26. Relaxing Deck
27. Celebration Pavilion
28. Celebration Lawn
29. Garden Walk
30. Secret Court
31. Infinity Edge Walk

#### COUNTRYSIDE GARDENS

##### Sanctuaire du Jardin

32. Flower Garden
33. Boutique Lawn Garden
34. Leisure Deck
35. Green Checker Garden
36. Serenity Garden
37. Fragrance Garden
38. Green Lounge
39. Botany Walk

##### Jardin du Pavillon

40. Dining Pavilion
41. Alfresco Dining
42. Chill Out Lawn
43. Party BBQ Pavilion
44. Party Alfresco Dining
45. Party Lawn

##### La Santé

46. Half Basketball Court
47. Jogging Track
48. Children's Playground
49. Fitness Corner

#### SERVICES

- A. Bicycle Parking Lots
- B. Guardhouse
- F. Side Gate
- G. Ventilation Shaft

### 2ND LEVEL

#### LIVING UP

50. Sky Dining
51. Sky Lounge
52. Sky Lawn

### ROOF LEVEL

53. Roof Terrace
- 53a. Water Tank

#### BASEMENT SERVICES

- A. Bicycle Parking Lots
- C. Genset
- D. Bin Centre
- E. Electrical Sub-station
- F. Side Gate





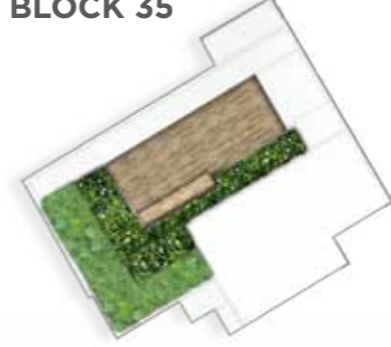
**BLOCK 31**



**BLOCK 33**



**BLOCK 35**



**BLOCK 37**



**BLOCK 39**



Roof Terraces on Block 31, 33, 35, 37 & 39 are located on level 13



**LEVEL 2**

**LIVING UP**

- 50. Sky Dining
- 51. Sky Lounge
- 52. Sky Lawn

**ROOF LEVEL**

- 53. Roof Terrace
- 53a. Water Tank

SCALE METER 0 3 6 9 12 15



**BLOCK 29**



**BLOCK 27**



**BLOCK 25**



**BLOCK 23**



Roof Terraces on Block 23, 25, 27 & 29 are located on level 11

SCALE METER 0 3 6 9 12 15



SCALE METER 0 3 6 9 12 15  
For Roof Terrace



# UNIT DISTRIBUTION CHART

23 Canberra Crescent S(757078)

Unit Floor	01	02	03	04
11		C5	C3	C6
10	C1	C5	C3	C6
9	C1	C5	C3	C6
8	C1	C5	C3	C6
7	C1	C5	C3	C6
6	C1	C5	C3	C6
5	C1	C5	C3	C6
4	C1	C5	C3	C6
3	C1	C5	C3	C6
2	C1	C5	C3	C6
1			C3-P	

25 Canberra Crescent S(757079)

Unit Floor	05	06	07	08
11	C5		C1	C3
10	C5	C4a	C1	C3
9	C5	C4a	C1	C3
8	C5	C4a	C1	C3
7	C5	C4a	C1	C3
6	C5	C4a	C1	C3
5	C5	C4a	C1	C3
4	C5	C4a	C1	C3
3	C5	C4a	C1	C3
2	C5	C4a	C1	C3
1		C4a-P	C1-P	C3-P

27 Canberra Crescent S(757080)

Unit Floor	09	10	11	12
11		C5a	C3	D1
10	C1	C5a	C3	D1
9	C1	C5a	C3	D1
8	C1	C5a	C3	D1
7	C1	C5a	C3	D1
6	C1	C5a	C3	D1
5	C1	C5a	C3	D1
4	C1	C5a	C3	D1
3	C1	C5a	C3	D1
2	C1	C5a	C3	D1
1	C1-P	C5a-P	C3-P	D1-P

29 Canberra Crescent S(757081)

Unit Floor	13	14	15	16
11		C1b	C6a	C2
10	C2a	C1b	C6a	C2
9	C2a	C1b	C6a	C2
8	C2a	C1b	C6a	C2
7	C2a	C1b	C6a	C2
6	C2a	C1b	C6a	C2
5	C2a	C1b	C6a	C2
4	C2a	C1b	C6a	C2
3	C2a	C1b	C6a	C2
2	C2a	C1b	C6a	C2
1	C2a-P	C1b-P	C6a-P	C2-P

31 Canberra Crescent S(756929)

Unit Floor	17	18	19	20
13	C2	C6		C2
12	C2	C6	C4	C2
11	C2	C6	C4	C2
10	C2	C6	C4	C2
9	C2	C6	C4	C2
8	C2	C6	C4	C2
7	C2	C6	C4	C2
6	C2	C6	C4	C2
5	C2	C6	C4	C2
4	C2	C6	C4	C2
3	C2	C6	C4	C2
2	C2	C6	C4	C2
1	C2-P	C6-P	C4-P	C2-P

33 Canberra Crescent S(756930)

Unit Floor	21	22	23	24
13	C2a	C1		C2
12	C2a	C1	C4	C2
11	C2a	C1	C4	C2
10	C2a	C1	C4	C2
9	C2a	C1	C4	C2
8	C2a	C1	C4	C2
7	C2a	C1	C4	C2
6	C2a	C1	C4	C2
5	C2a	C1	C4	C2
4	C2a	C1	C4	C2
3	C2a	C1	C4	C2
2		C1	C4	C2
1		C1-P	C4-P	C2-P

35 Canberra Crescent S(756931)

Unit Floor	25	26	27	28
13	C1a	C7		C1
12	C1a	C7	C3	C1
11	C1a	C7	C3	C1
10	C1a	C7	C3	C1
9	C1a	C7	C3	C1
8	C1a	C7	C3	C1
7	C1a	C7	C3	C1
6	C1a	C7	C3	C1
5	C1a	C7	C3	C1
4	C1a	C7	C3	C1
3	C1a	C7	C3	C1
2			C3	C1
1			C3-P	C1-P

37 Canberra Crescent S(756932)

Unit Floor	29	30	31	32
13	C1a	D2		C1
12	C1a	D2	C3	C1
11	C1a	D2	C3	C1
10	C1a	D2	C3	C1
9	C1a	D2	C3	C1
8	C1a	D2	C3	C1
7	C1a	D2	C3	C1
6	C1a	D2	C3	C1
5	C1a	D2	C3	C1
4	C1a	D2	C3	C1
3	C1a	D2	C3	C1
2		D2	C3	C1
1		D2-P	C3-P	C1-P

39 Canberra Crescent S(756933)

Unit Floor	33	34	35	36
13	C1	C5		C1
12	C1	C5	C3	C1
11	C1	C5	C3	C1
10	C1	C5	C3	C1
9	C1	C5	C3	C1
8	C1	C5	C3	C1
7	C1	C5	C3	C1
6	C1	C5	C3	C1
5	C1	C5	C3	C1
4	C1	C5	C3	C1
3	C1	C5	C3	C1
2	C1	C5	C3	C1
1			C3-P	C1-P

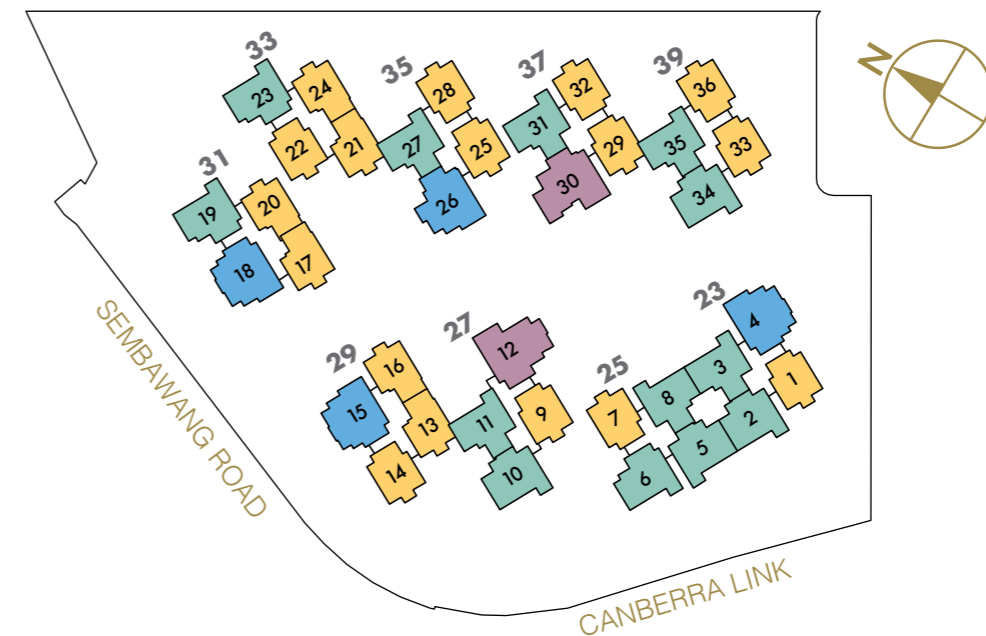
LEGEND

C1	3-Bedroom Chic
C1a	3-Bedroom Chic
C1b	3-Bedroom Chic
C2	3-Bedroom Chic
C2a	3-Bedroom Chic

C3	3-Bedroom Luxe
C4	3-Bedroom Luxe
C4a	3-Bedroom Luxe
C5	3-Bedroom Luxe
C5a	3-Bedroom Luxe

C6	3-Bedroom Elite
C6a	3-Bedroom Elite
C7	3-Bedroom Elite
D1	4-Bedroom Grande
D2	4-Bedroom Grande

KEY PLAN



# TYPE C1-P/C1b-P

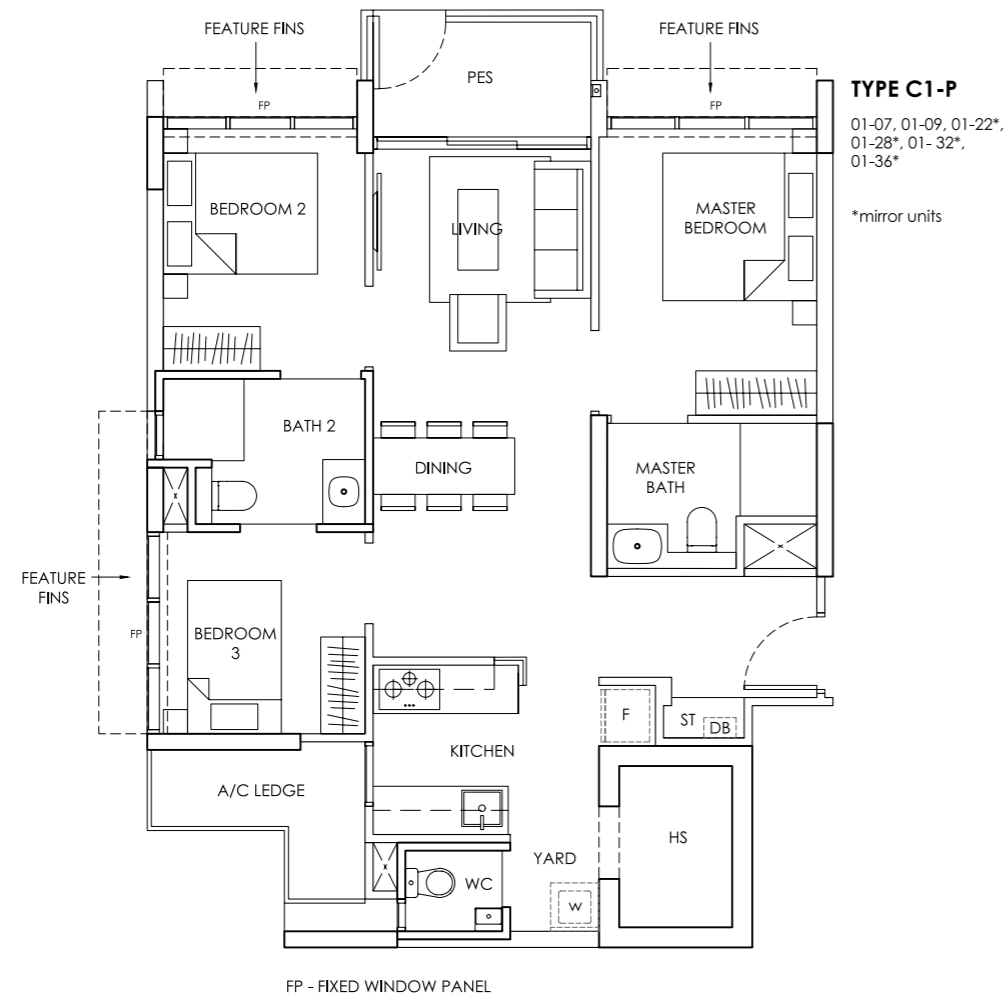
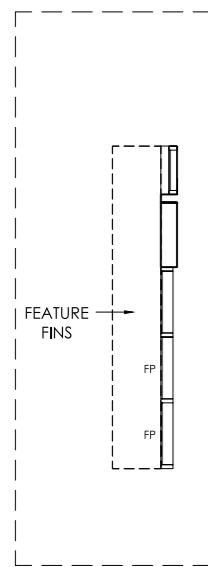
3 Bedroom with PES  
Area: 82 sqm / 883 sqft

3 Bedroom  
Area: 82 sqm / 883 sqft

### TYPE C1b-P

01-14\*

\*mirror units



### TYPE C1-P

01-07, 01-09, 01-22\*,  
01-28\*, 01-32\*,  
01-36\*

\*mirror units

FP - FIXED WINDOW PANEL

### TYPE C1

03-01, 05-01,  
07-01, 09-01

03-07, 05-07,  
07-07, 09-07,  
11-07

03-09, 05-09,  
07-09, 09-09

03-22\*, 05-22\*,  
07-22\*, 09-22\*,  
11-22\*, 13-22\*

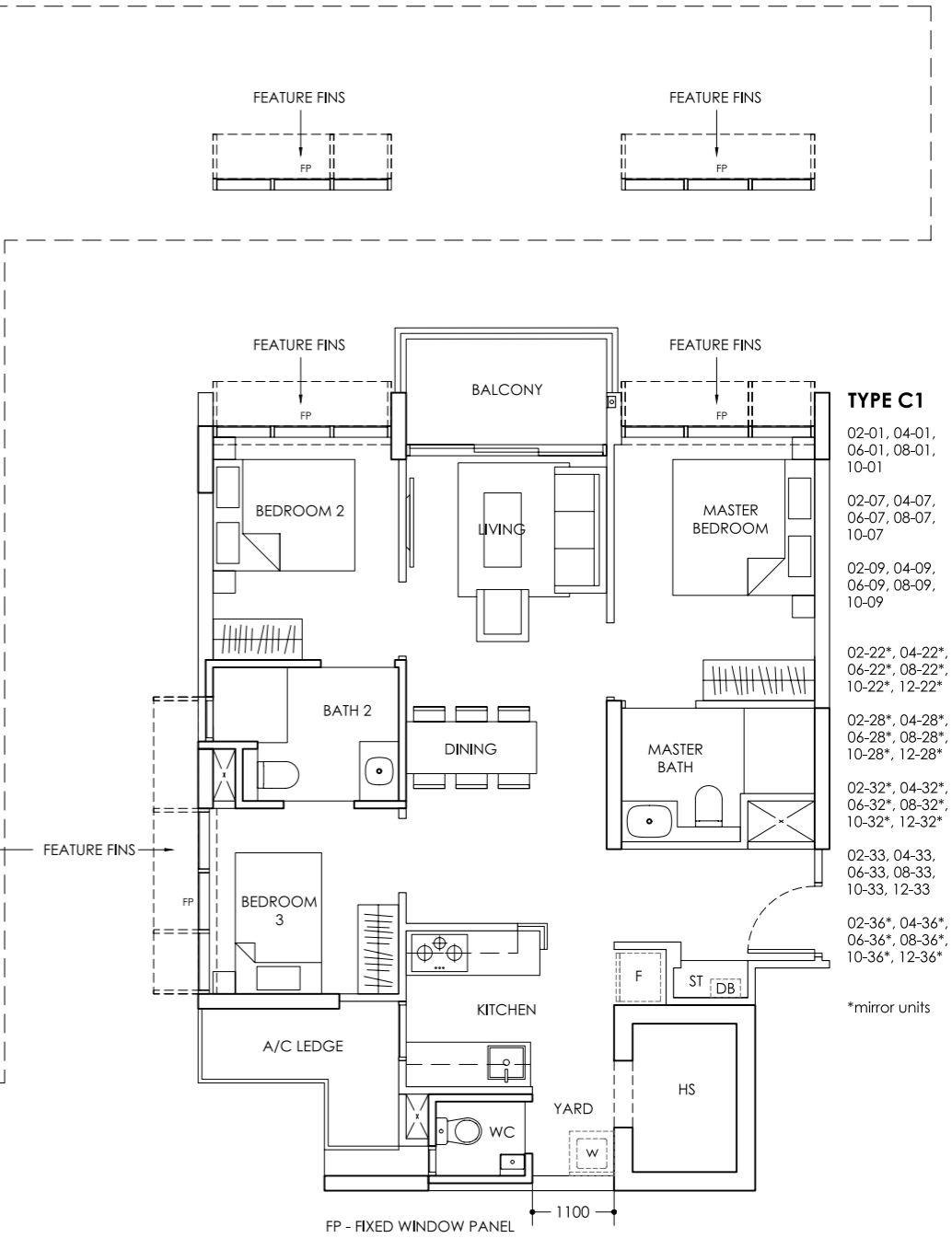
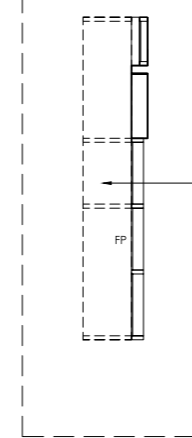
03-28\*, 05-28\*,  
07-28\*, 09-28\*,  
11-28\*, 13-28\*

03-32\*, 05-32\*,  
07-32\*, 09-32\*,  
11-32\*, 13-32\*

03-33, 05-33,  
07-33, 09-33,  
11-33, 13-33

03-36\*, 05-36\*,  
07-36\*, 09-36\*,  
11-36\*, 13-36\*

\*mirror units



### TYPE C1

02-01, 04-01,  
06-01, 08-01,  
10-01

02-07, 04-07,  
06-07, 08-07,  
10-07

02-09, 04-09,  
06-09, 08-09,  
10-09

02-22\*, 04-22\*,  
06-22\*, 08-22\*,  
10-22\*, 12-22\*

02-28\*, 04-28\*,  
06-28\*, 08-28\*,  
10-28\*, 12-28\*

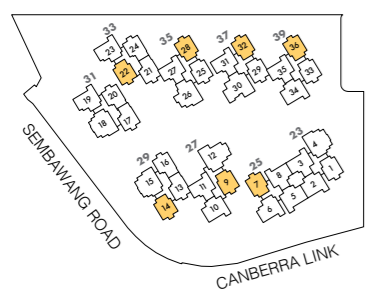
02-32\*, 04-32\*,  
06-32\*, 08-32\*,  
10-32\*, 12-32\*

02-33, 04-33,  
06-33, 08-33,  
10-33, 12-33

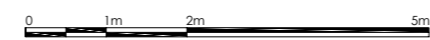
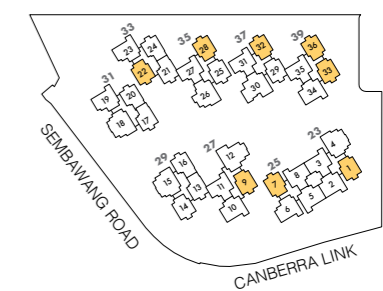
02-36\*, 04-36\*,  
06-36\*, 08-36\*,  
10-36\*, 12-36\*

\*mirror units

FP - FIXED WINDOW PANEL



Area includes A/C ledge, balcony, PES, Roof Terrace and Void (where applicable). Orientation and facings will differ depending on the unit you are purchasing (please refer to key plan). All plans are not to scale and subject to changes as may be required by relevant authorities. All appliances and furniture shown in the plan are for illustration purpose only and not representation of fact. All floor areas are estimated and subjected to final survey. Legend: F - Fridge DB - Distribution Board ST - Storage space WC - Water Closet W - Washer A/C - Aircon PES - Private Enclosed Space HS - Household Shelter



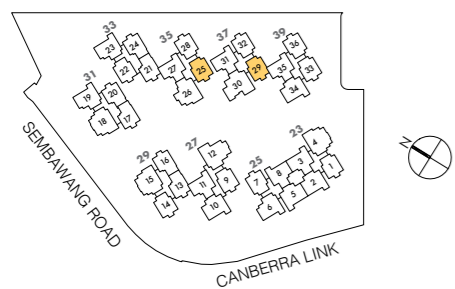
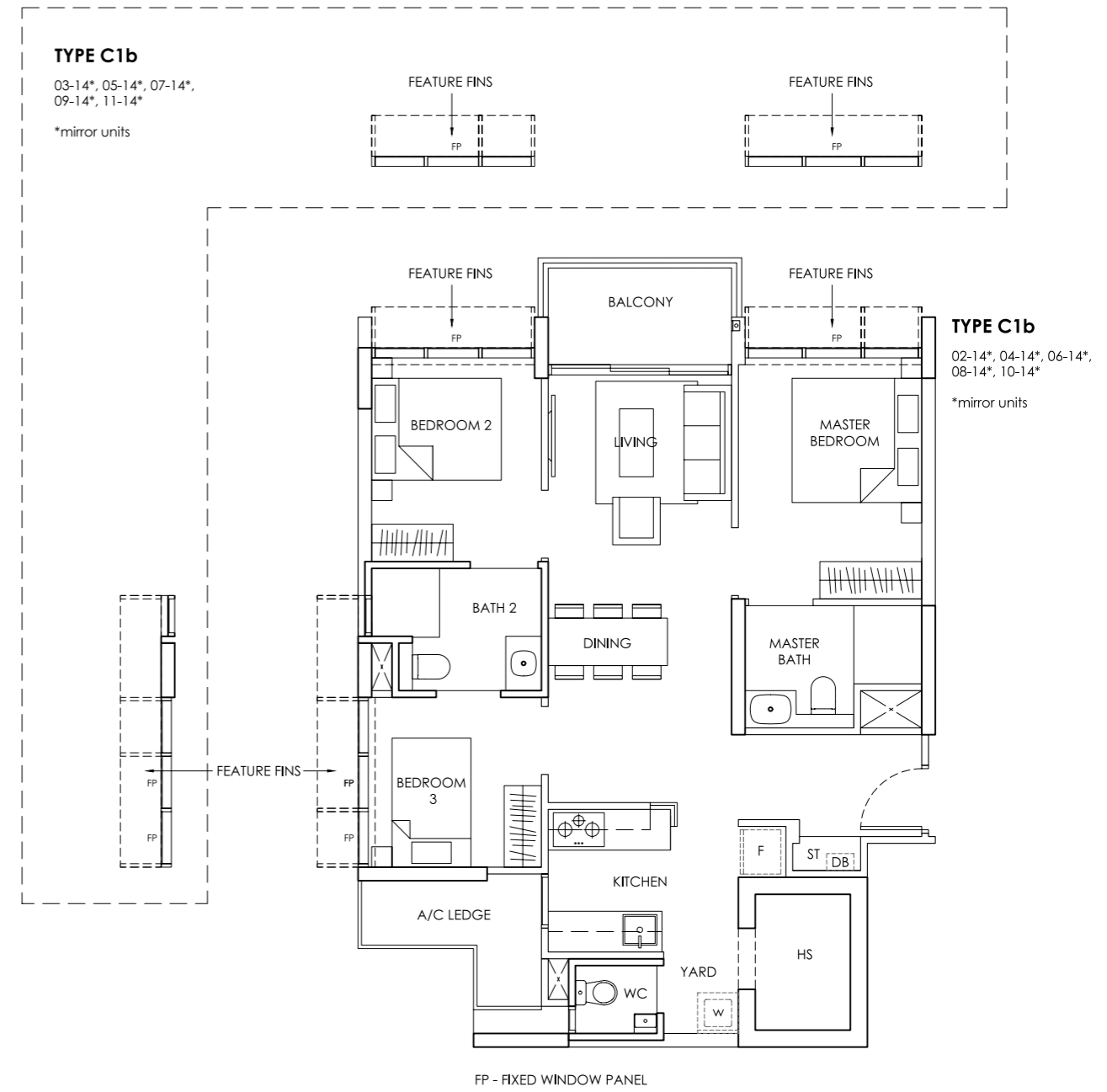
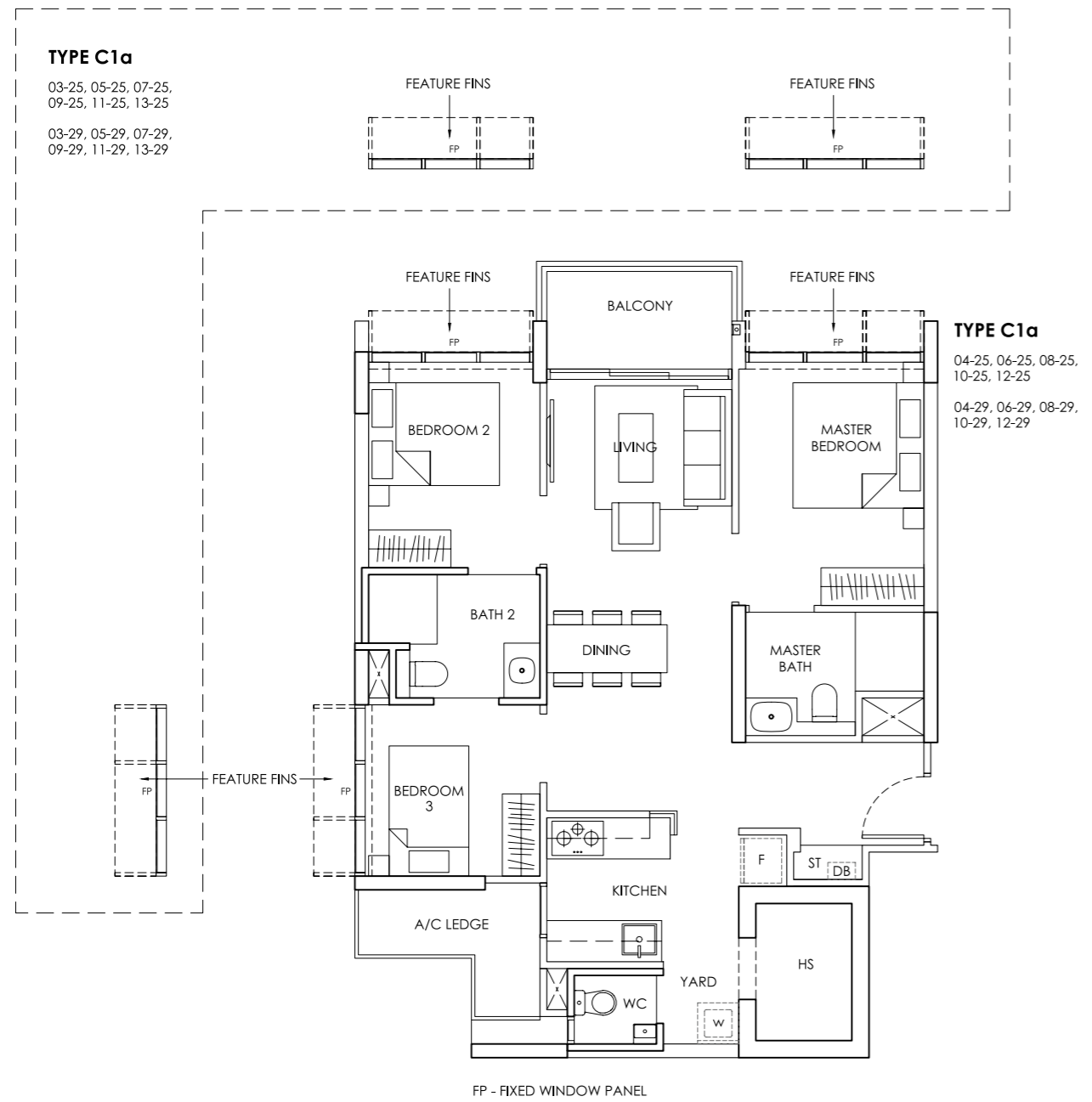
Area includes A/C ledge, balcony, PES, Roof Terrace and Void (where applicable). Orientation and facings will differ depending on the unit you are purchasing (please refer to key plan). All plans are not to scale and subject to changes as may be required by relevant authorities. All appliances and furniture shown in the plan are for illustration purpose only and not representation of fact. All floor areas are estimated and subjected to final survey. Legend: F - Fridge DB - Distribution Board ST - Storage space WC - Water Closet W - Washer A/C - Aircon PES - Private Enclosed Space HS - Household Shelter

# TYPE C1a

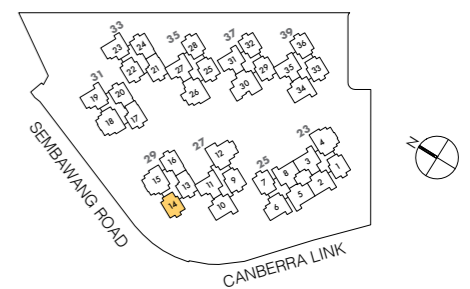
3 Bedroom  
Area: 82 sqm / 883 sqft

# TYPE C1b

3 Bedroom  
Area: 82 sqm / 883 sqft



Area includes A/C ledge, balcony, PES, Roof Terrace and Void (where applicable). Orientation and facings will differ depending on the unit you are purchasing (please refer to key plan). All plans are not to scale and subject to changes as may be required by relevant authorities. All appliances and furniture shown in the plan are for illustration purpose only and not representation of fact. All floor areas are estimated and subjected to final survey.  
Legend: F - Fridge DB - Distribution Board ST - Storage space WC - Water Closet W - Washer A/C - Aircon PES - Private Enclosed Space HS - Household Shelter



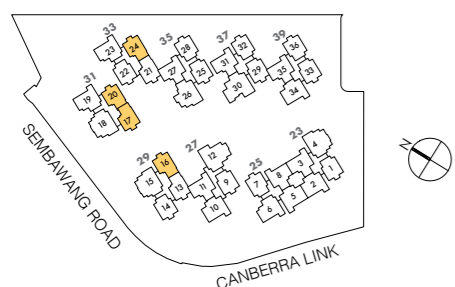
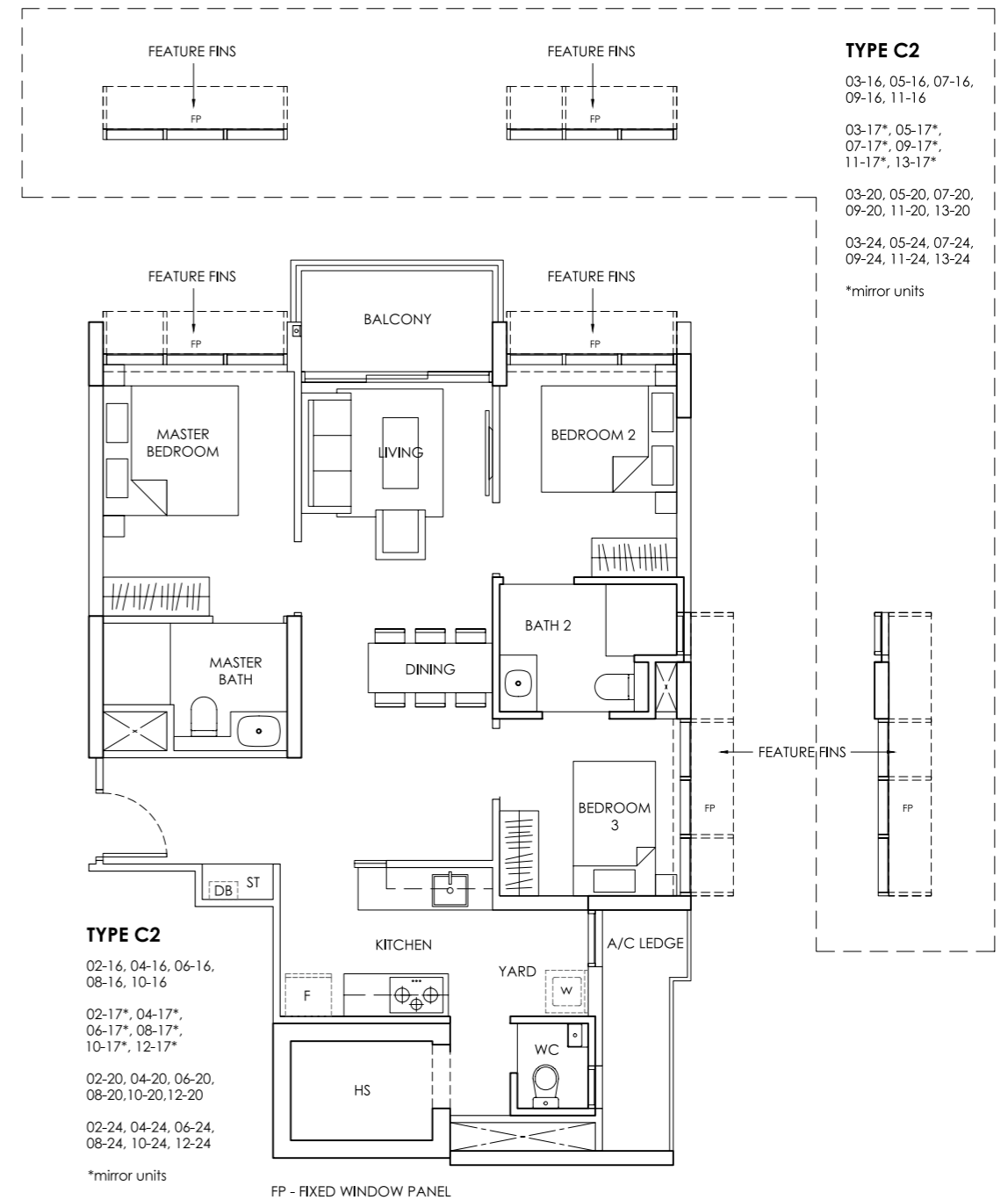
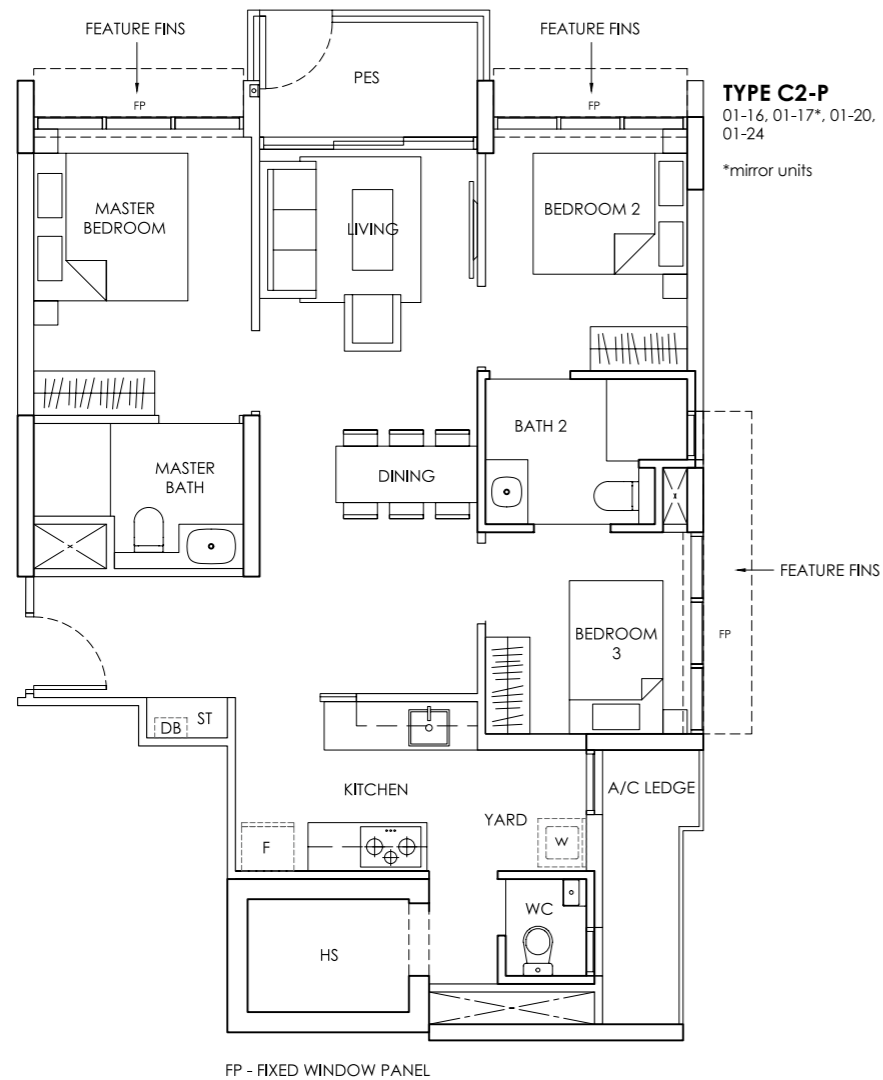
Area includes A/C ledge, balcony, PES, Roof Terrace and Void (where applicable). Orientation and facings will differ depending on the unit you are purchasing (please refer to key plan). All plans are not to scale and subject to changes as may be required by relevant authorities. All appliances and furniture shown in the plan are for illustration purpose only and not representation of fact. All floor areas are estimated and subjected to final survey.  
Legend: F - Fridge DB - Distribution Board ST - Storage space WC - Water Closet W - Washer A/C - Aircon PES - Private Enclosed Space HS - Household Shelter

# TYPE C2-P

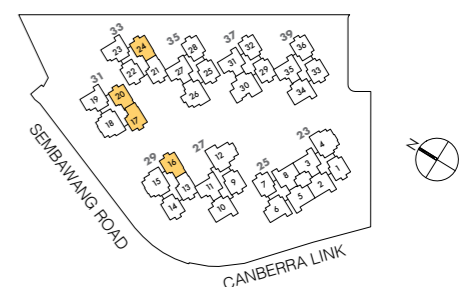
3 Bedroom with PES  
Area: 86 sqm / 926 sqft

# TYPE C2

3 Bedroom  
Area: 86 sqm / 926 sqft



Area includes A/C ledge, balcony, PES, Roof Terrace and Void (where applicable). Orientation and facings will differ depending on the unit you are purchasing (please refer to key plan). All plans are not to scale and subject to changes as may be required by relevant authorities. All appliances and furniture shown in the plan are for illustration purpose only and not representation of fact. All floor areas are estimated and subjected to final survey.  
Legend: F - Fridge DB - Distribution Board ST - Storage space WC - Water Closet W - Washer A/C - Aircon PES - Private Enclosed Space HS - Household Shelter



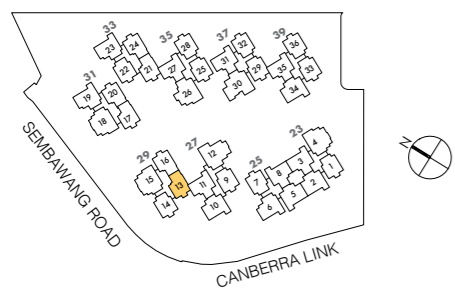
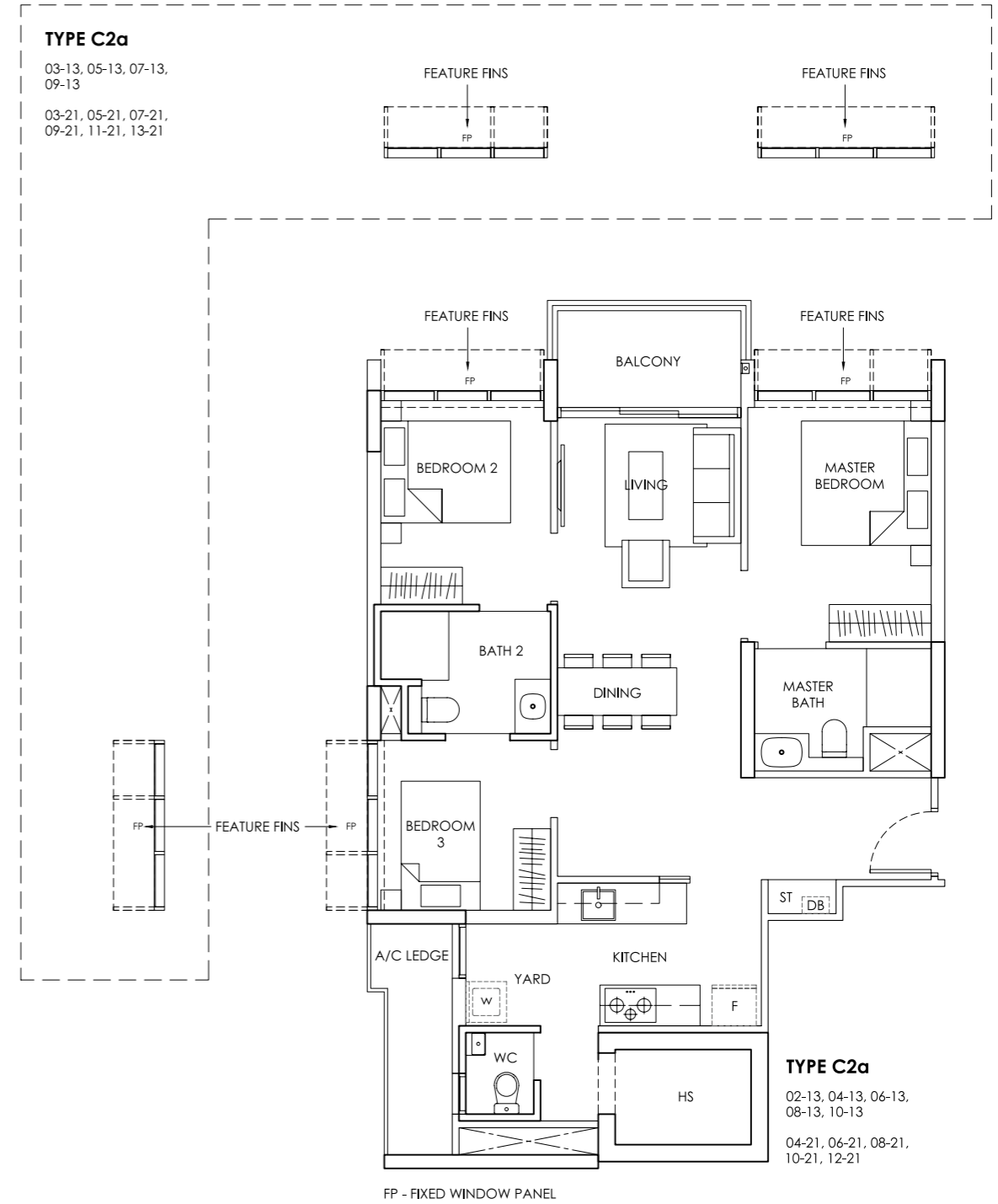
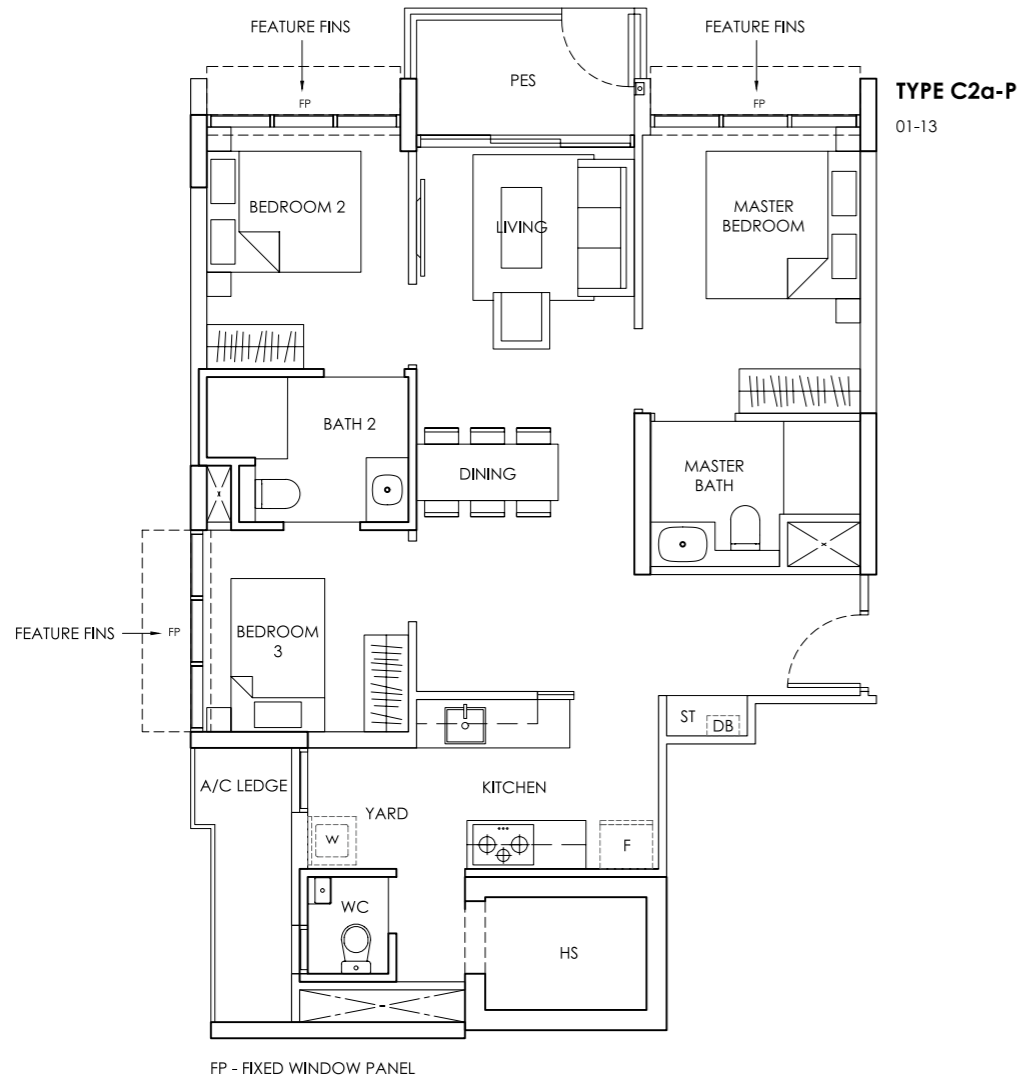
Area includes A/C ledge, balcony, PES, Roof Terrace and Void (where applicable). Orientation and facings will differ depending on the unit you are purchasing (please refer to key plan). All plans are not to scale and subject to changes as may be required by relevant authorities. All appliances and furniture shown in the plan are for illustration purpose only and not representation of fact. All floor areas are estimated and subjected to final survey.  
Legend: F - Fridge DB - Distribution Board ST - Storage space WC - Water Closet W - Washer A/C - Aircon PES - Private Enclosed Space HS - Household Shelter

# TYPE C2a-P

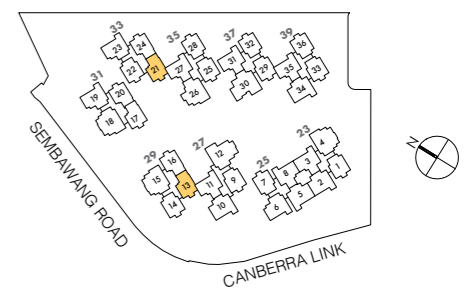
3 Bedroom with PES  
Area: 86 sqm / 926 sqft

# TYPE C2a

3 Bedroom  
Area: 86 sqm / 926 sqft



Area includes A/C ledge, balcony, PES, Roof Terrace and Void (where applicable). Orientation and facings will differ depending on the unit you are purchasing (please refer to key plan). All plans are not to scale and subject to changes as may be required by relevant authorities. All appliances and furniture shown in the plan are for illustration purpose only and not representation of fact. All floor areas are estimated and subjected to final survey.  
Legend: F - Fridge DB - Distribution Board ST - Storage space WC - Water Closet W - Washer A/C - Aircon PES - Private Enclosed Space HS - Household Shelter



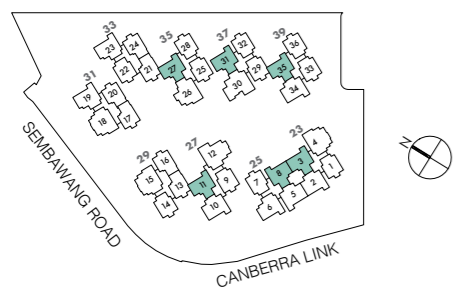
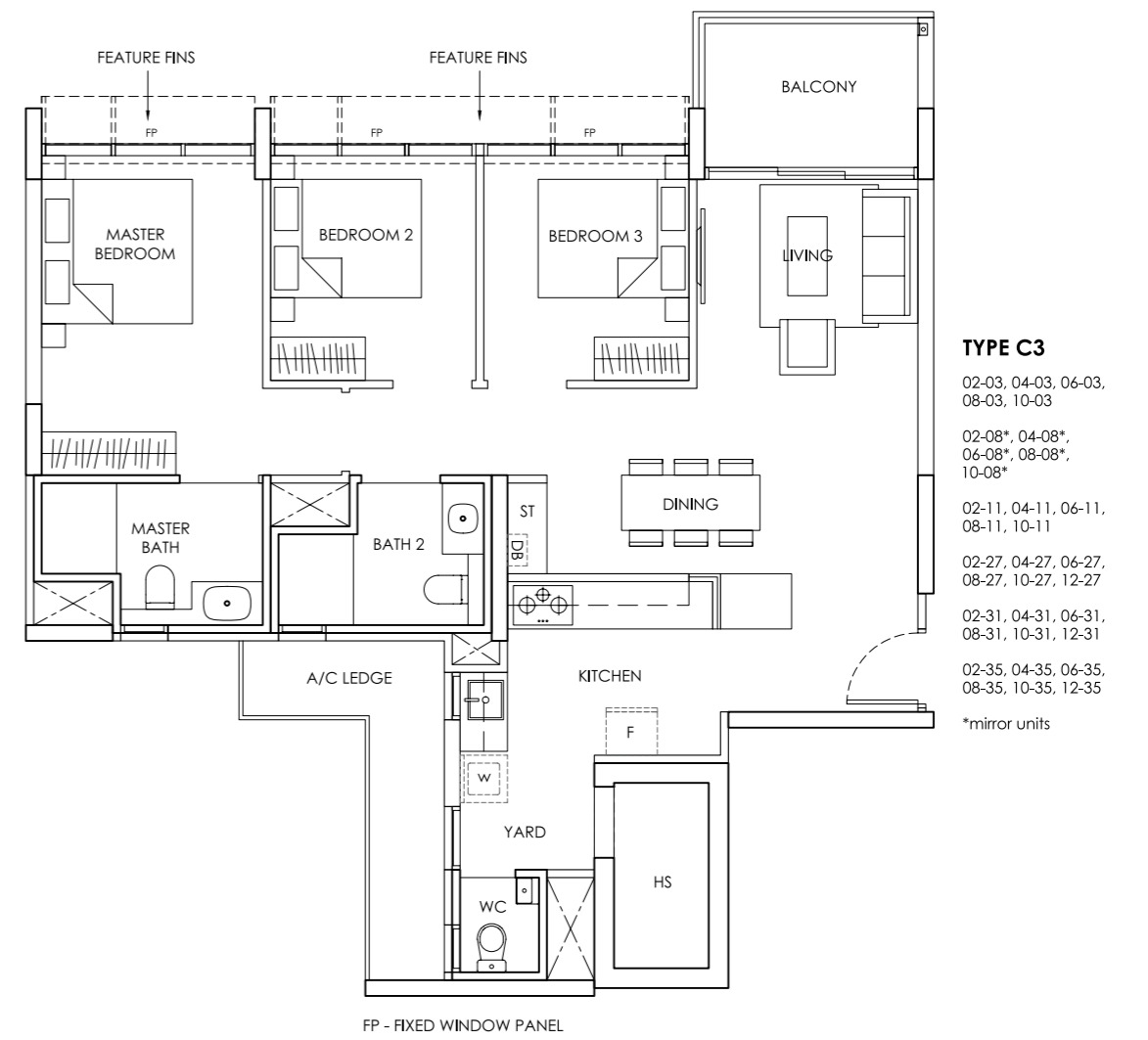
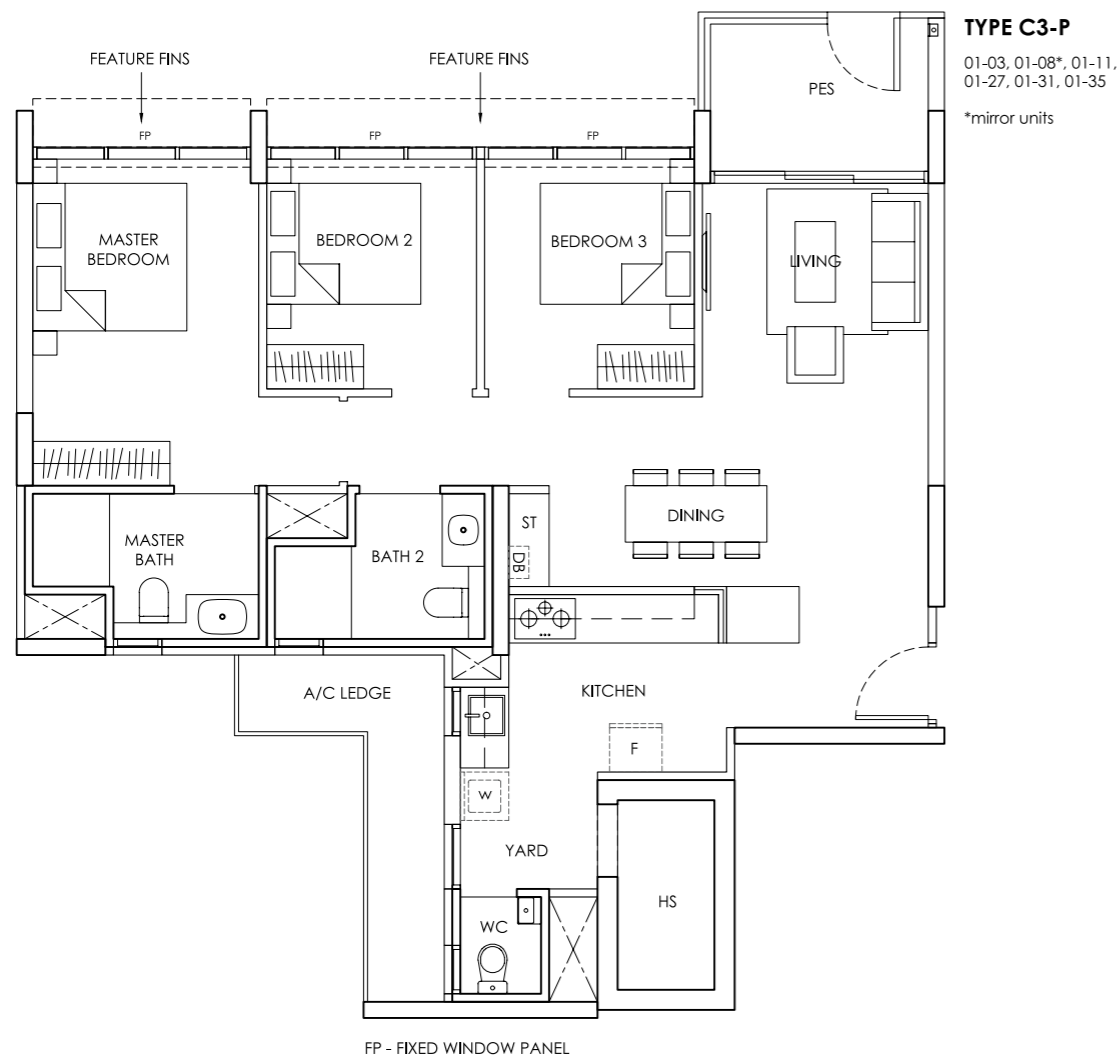
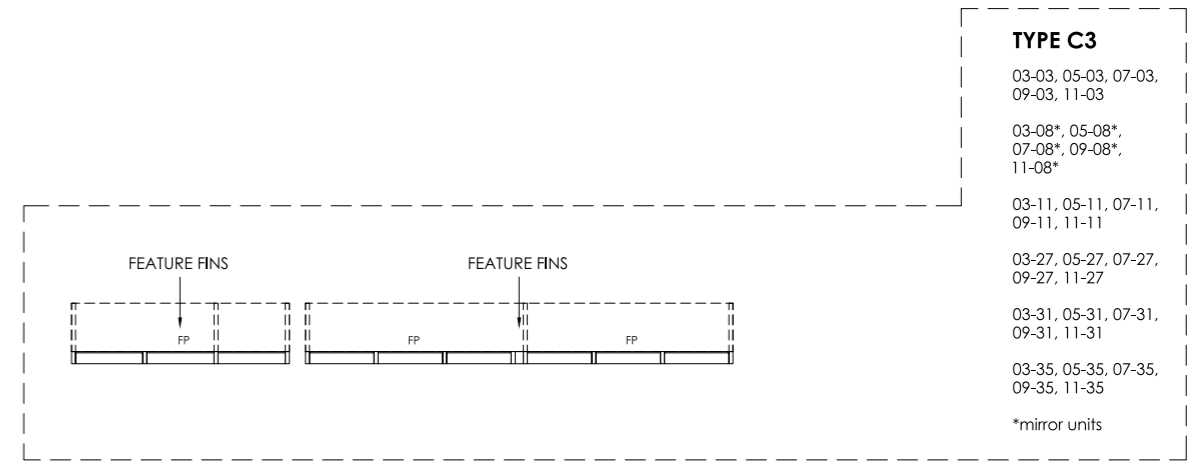
Area includes A/C ledge, balcony, PES, Roof Terrace and Void (where applicable). Orientation and facings will differ depending on the unit you are purchasing (please refer to key plan). All plans are not to scale and subject to changes as may be required by relevant authorities. All appliances and furniture shown in the plan are for illustration purpose only and not representation of fact. All floor areas are estimated and subjected to final survey.  
Legend: F - Fridge DB - Distribution Board ST - Storage space WC - Water Closet W - Washer A/C - Aircon PES - Private Enclosed Space HS - Household Shelter

# TYPE C3-P

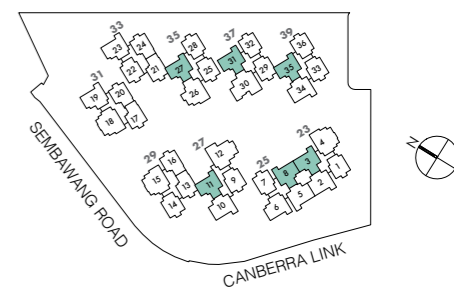
3 Bedroom with PES  
Area: 97 sqm / 1044 sqft

# TYPE C3

3 Bedroom  
Area: 97 sqm / 1044 sqft



Area includes A/C ledge, balcony, PES, Roof Terrace and Void (where applicable). Orientation and facings will differ depending on the unit you are purchasing (please refer to key plan). All plans are not to scale and subject to changes as may be required by relevant authorities. All appliances and furniture shown in the plan are for illustration purpose only and not representation of fact. All floor areas are estimated and subjected to final survey.  
Legend: F - Fridge DB - Distribution Board ST - Storage space WC - Water Closet W - Washer A/C - Aircon PES - Private Enclosed Space HS - Household Shelter



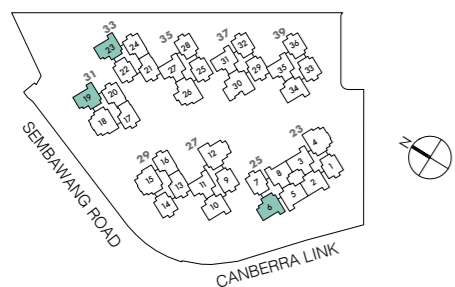
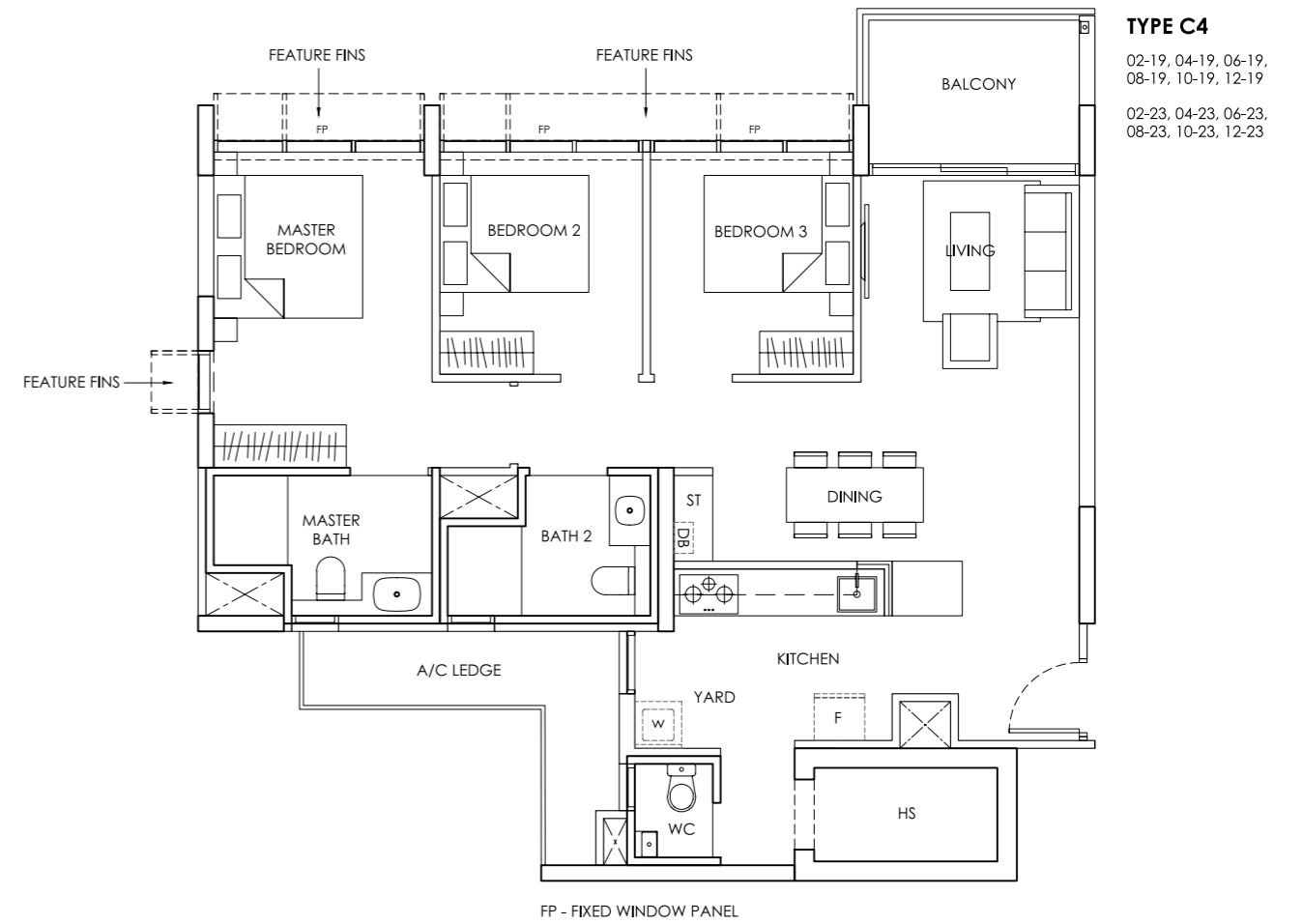
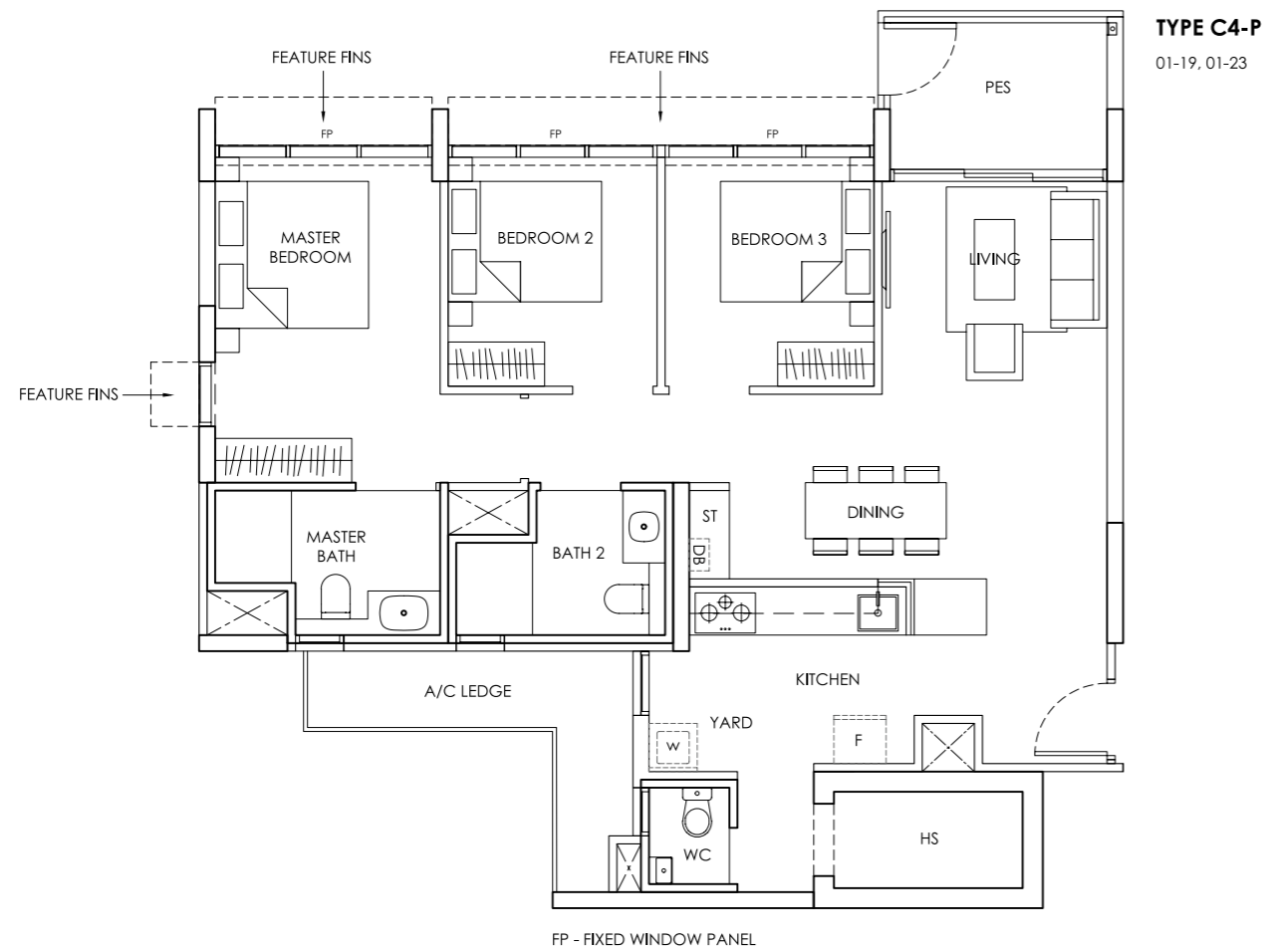
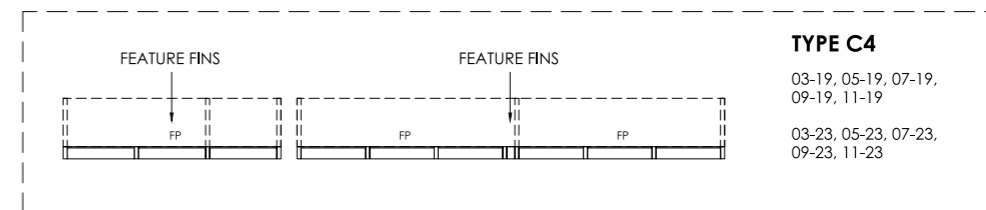
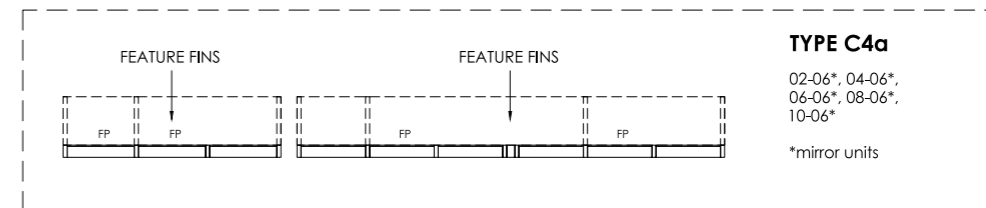
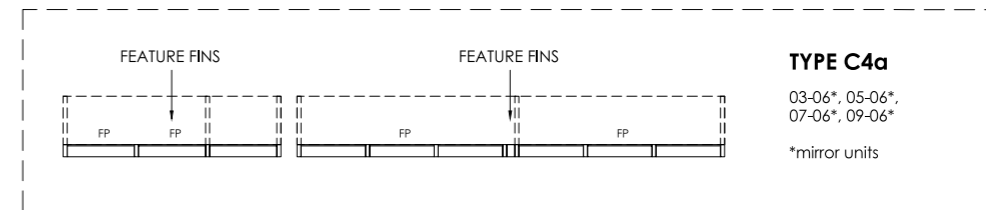
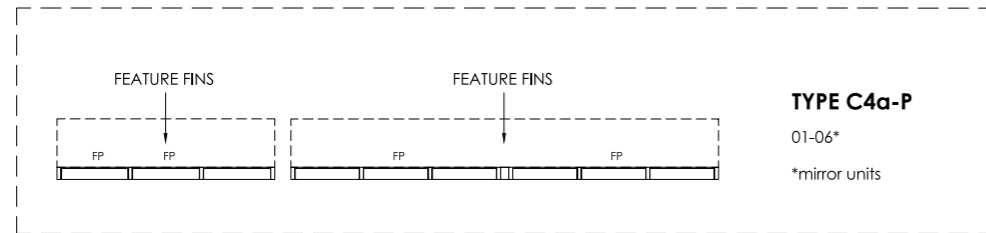
Area includes A/C ledge, balcony, PES, Roof Terrace and Void (where applicable). Orientation and facings will differ depending on the unit you are purchasing (please refer to key plan). All plans are not to scale and subject to changes as may be required by relevant authorities. All appliances and furniture shown in the plan are for illustration purpose only and not representation of fact. All floor areas are estimated and subjected to final survey.  
Legend: F - Fridge DB - Distribution Board ST - Storage space WC - Water Closet W - Washer A/C - Aircon PES - Private Enclosed Space HS - Household Shelter

# TYPE C4-P, C4a-P

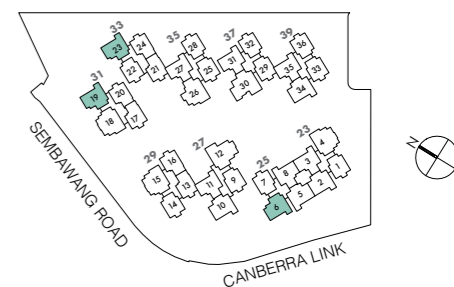
3 Bedroom with PES  
Area: 97 sqm / 1044 sqft

# TYPE C4, C4a

3 Bedroom  
Area: 97 sqm / 1044 sqft



Area includes A/C ledge, balcony, PES, Roof Terrace and Void (where applicable). Orientation and facings will differ depending on the unit you are purchasing (please refer to key plan). All plans are not to scale and subject to changes as may be required by relevant authorities. All appliances and furniture shown in the plan are for illustration purpose only and not representation of fact. All floor areas are estimated and subjected to final survey.  
Legend: F - Fridge DB - Distribution Board ST - Storage space WC - Water Closet W - Washer A/C - Aircon PES - Private Enclosed Space HS - Household Shelter



Area includes A/C ledge, balcony, PES, Roof Terrace and Void (where applicable). Orientation and facings will differ depending on the unit you are purchasing (please refer to key plan). All plans are not to scale and subject to changes as may be required by relevant authorities. All appliances and furniture shown in the plan are for illustration purpose only and not representation of fact. All floor areas are estimated and subjected to final survey.  
Legend: F - Fridge DB - Distribution Board ST - Storage space WC - Water Closet W - Washer A/C - Aircon PES - Private Enclosed Space HS - Household Shelter

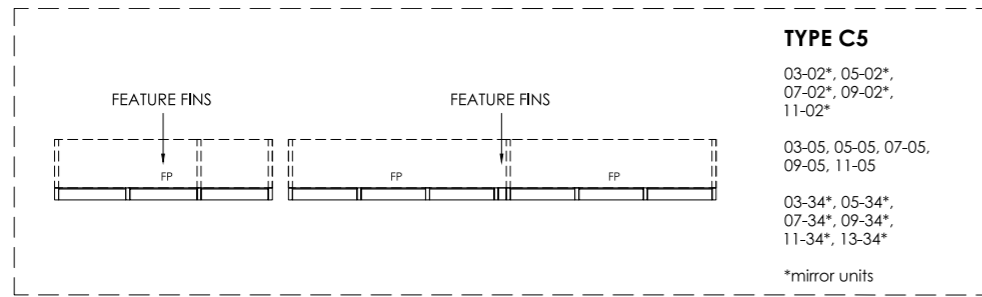


# TYPE C5

3 Bedroom  
Area: 99 sqm / 1066 sqft

# TYPE C5a-P

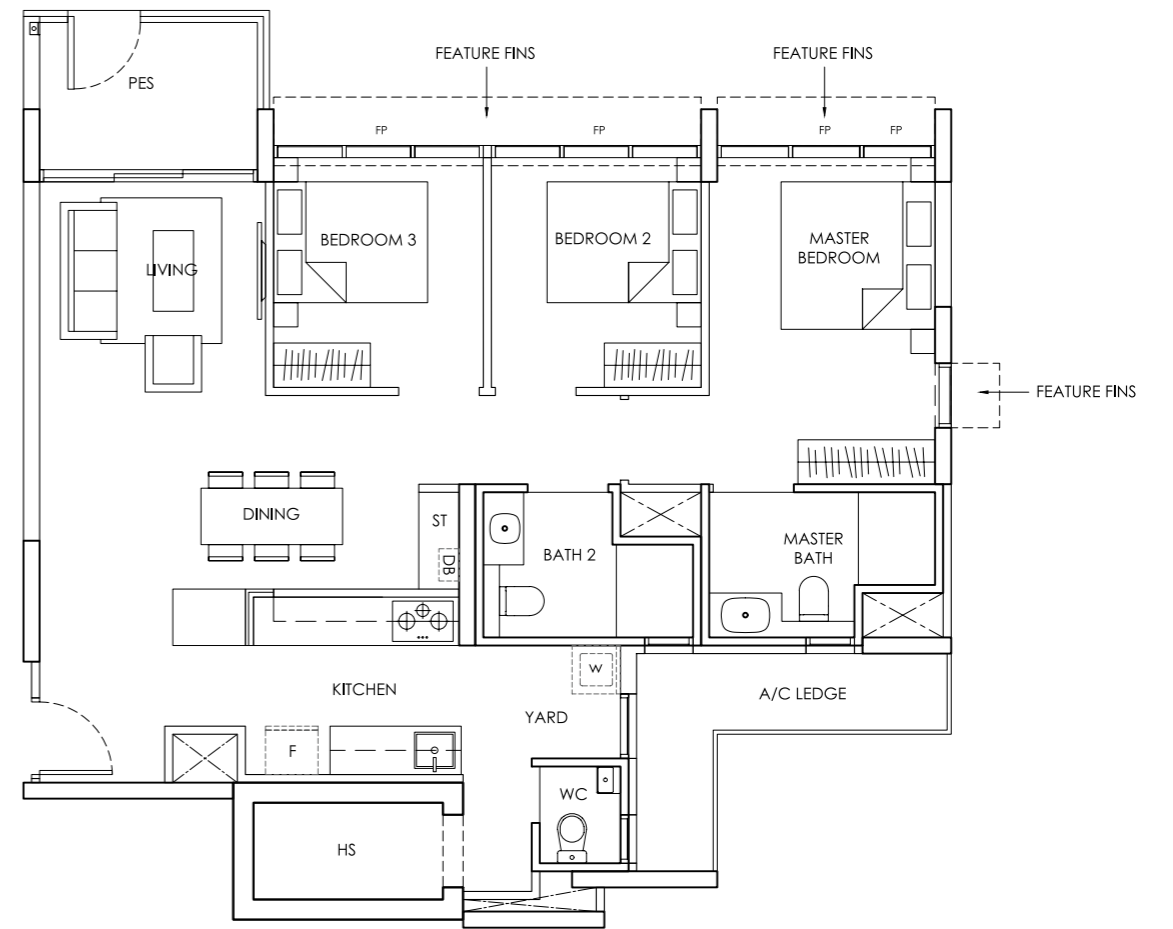
3 Bedroom with PES  
Area: 99 sqm / 1066 sqft



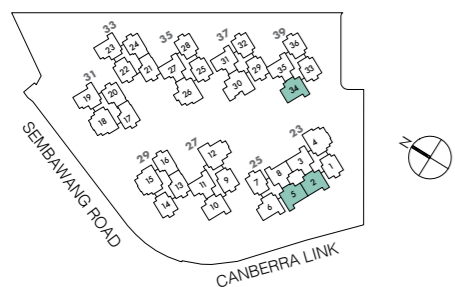
FP - FIXED WINDOW PANEL

## TYPE C5a-P

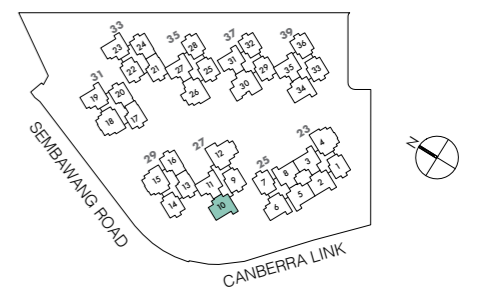
01-10



FP - FIXED WINDOW PANEL



Area includes A/C ledge, balcony, PES, Roof Terrace and Void (where applicable). Orientation and facings will differ depending on the unit you are purchasing (please refer to key plan). All plans are not to scale and subject to changes as may be required by relevant authorities. All appliances and furniture shown in the plan are for illustration purpose only and not representation of fact. All floor areas are estimated and subjected to final survey.  
Legend: F - Fridge DB - Distribution Board ST - Storage space WC - Water Closet W - Washer A/C - Aircon PES - Private Enclosed Space HS - Household Shelter



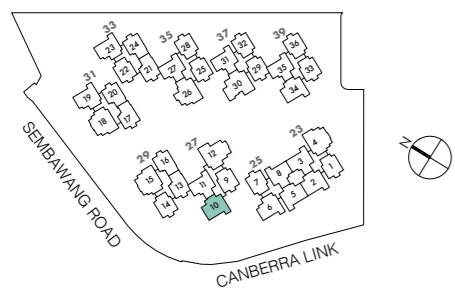
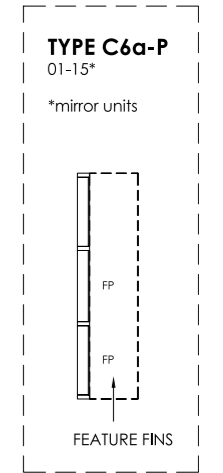
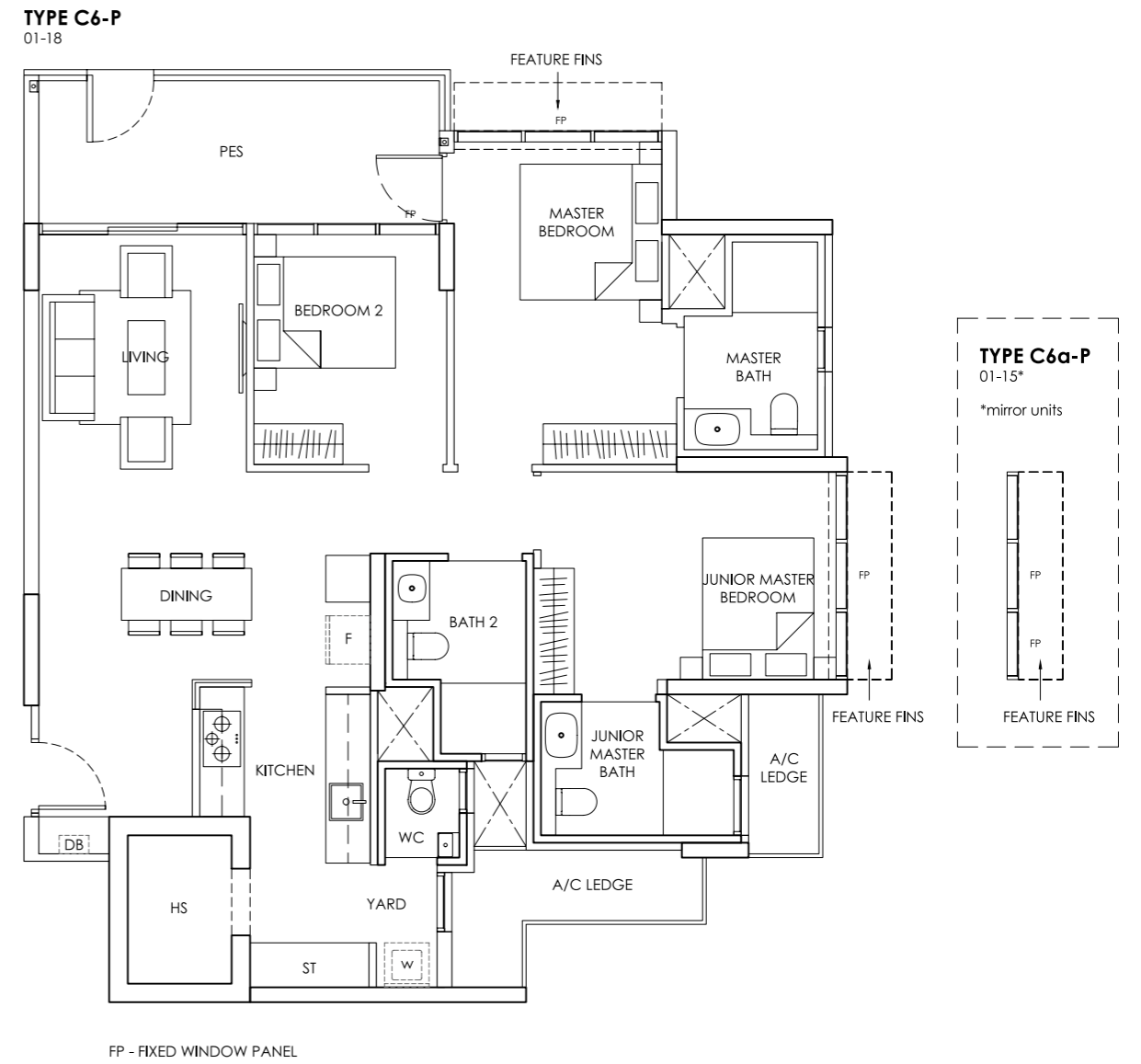
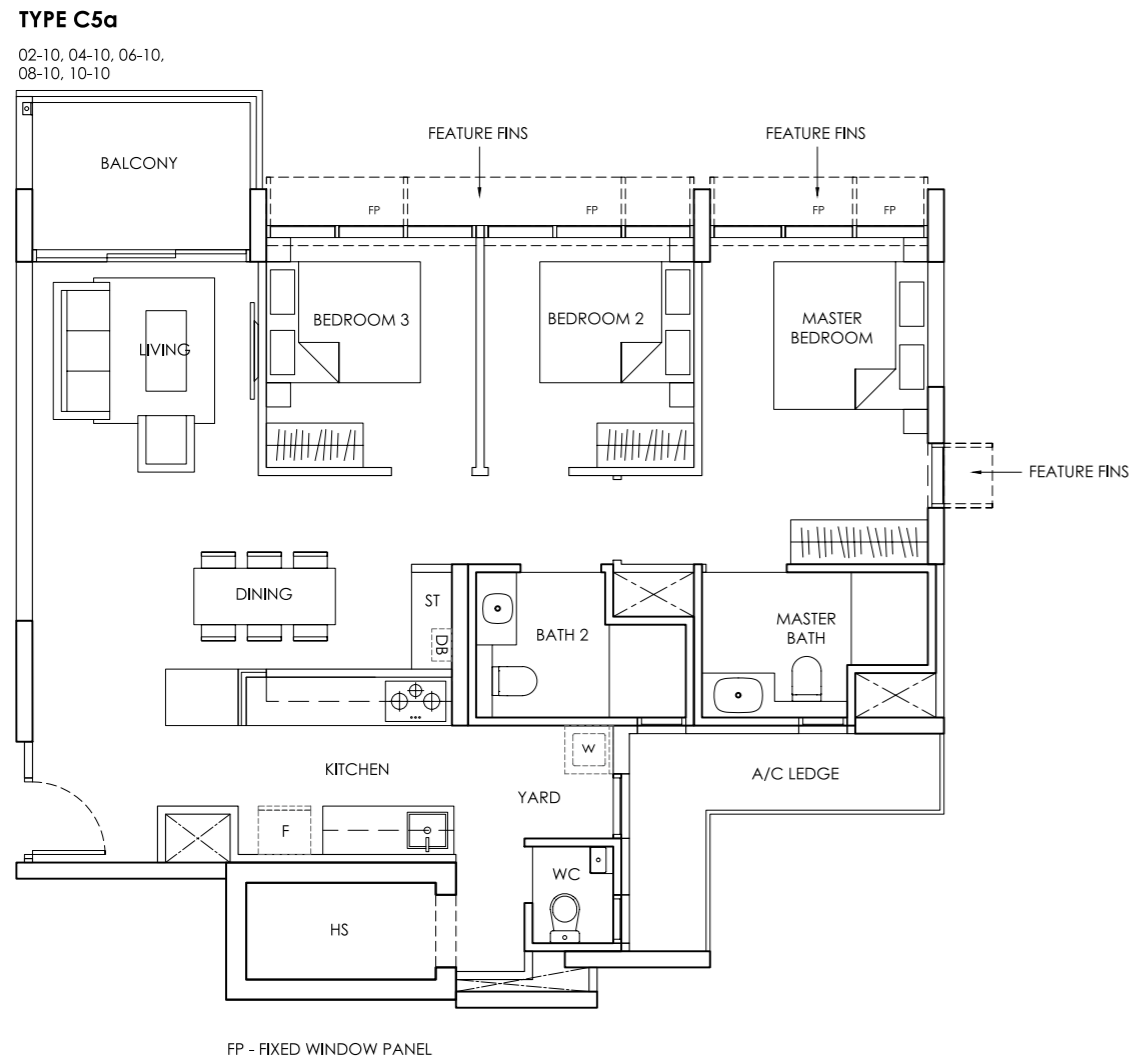
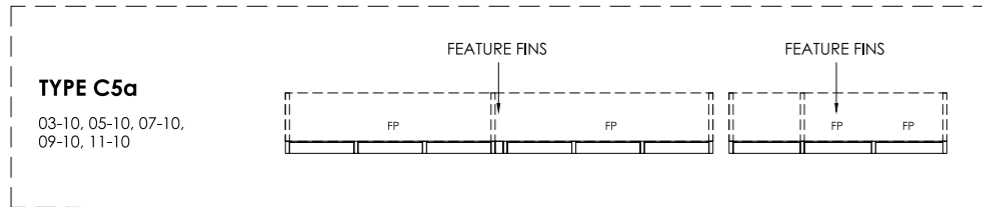
Area includes A/C ledge, balcony, PES, Roof Terrace and Void (where applicable). Orientation and facings will differ depending on the unit you are purchasing (please refer to key plan). All plans are not to scale and subject to changes as may be required by relevant authorities. All appliances and furniture shown in the plan are for illustration purpose only and not representation of fact. All floor areas are estimated and subjected to final survey.  
Legend: F - Fridge DB - Distribution Board ST - Storage space WC - Water Closet W - Washer A/C - Aircon PES - Private Enclosed Space HS - Household Shelter

# TYPE C5a

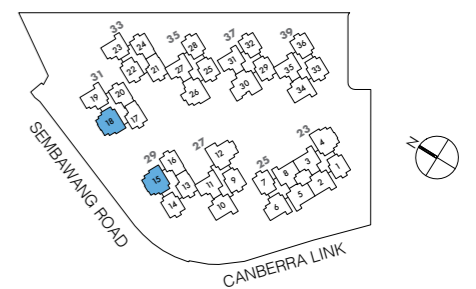
3 Bedroom  
Area: 99 sqm / 1066 sqft

# TYPE C6-P, C6a-P

3 Bedroom with PES  
Area: 116 sqm / 1249 sqft



Area includes A/C ledge, balcony, PES, Roof Terrace and Void (where applicable). Orientation and facings will differ depending on the unit you are purchasing (please refer to key plan). All plans are not to scale and subject to changes as may be required by relevant authorities. All appliances and furniture shown in the plan are for illustration purpose only and not representation of fact. All floor areas are estimated and subjected to final survey.  
Legend: F - Fridge DB - Distribution Board ST - Storage space WC - Water Closet W - Washer A/C - Aircon PES - Private Enclosed Space HS - Household Shelter



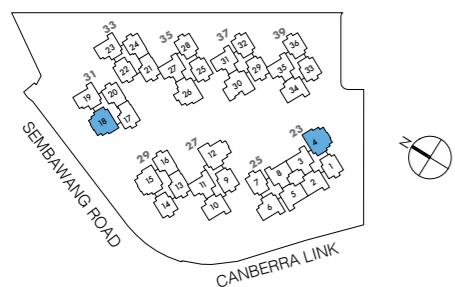
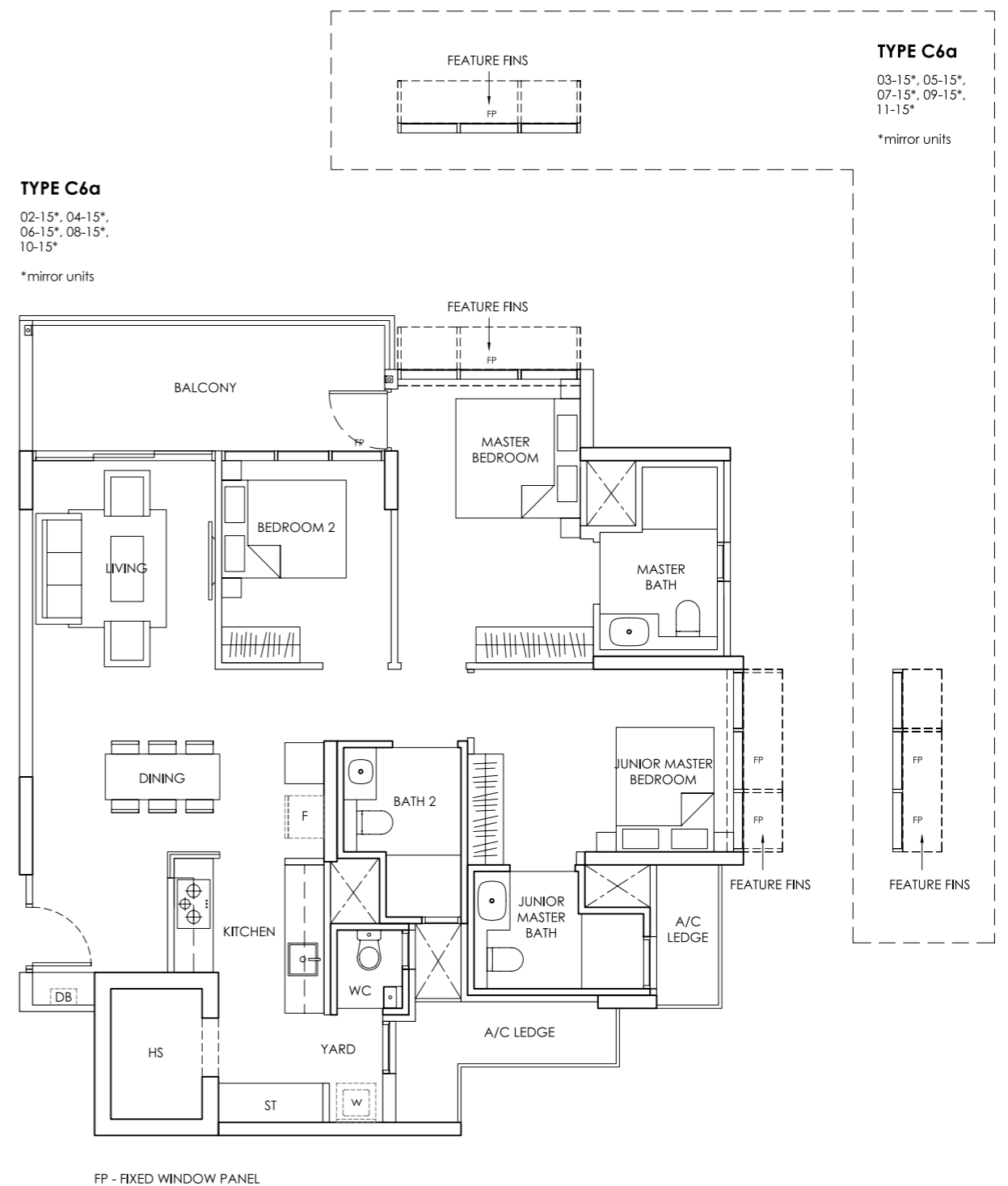
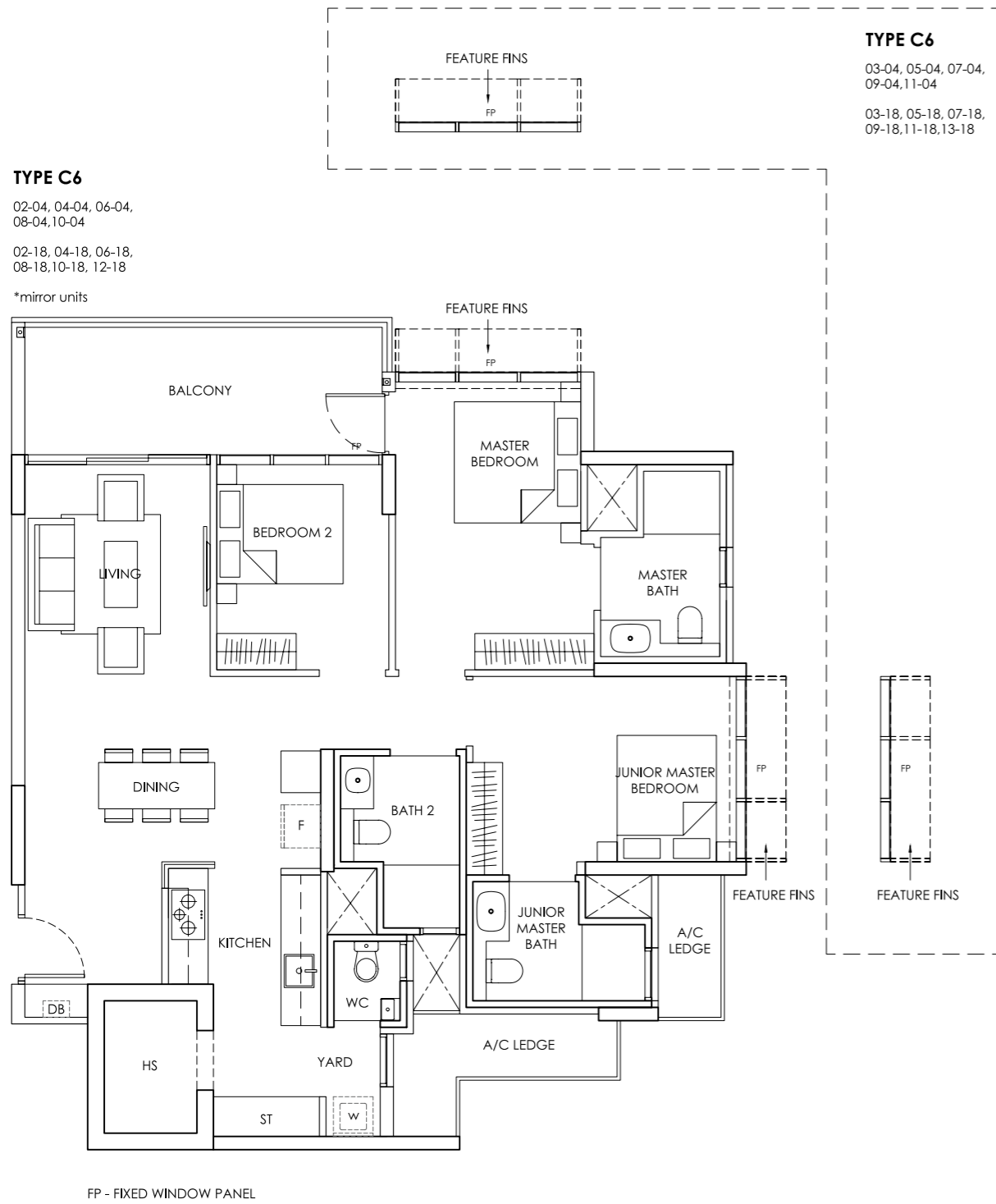
Area includes A/C ledge, balcony, PES, Roof Terrace and Void (where applicable). Orientation and facings will differ depending on the unit you are purchasing (please refer to key plan). All plans are not to scale and subject to changes as may be required by relevant authorities. All appliances and furniture shown in the plan are for illustration purpose only and not representation of fact. All floor areas are estimated and subjected to final survey.  
Legend: F - Fridge DB - Distribution Board ST - Storage space WC - Water Closet W - Washer A/C - Aircon PES - Private Enclosed Space HS - Household Shelter

# TYPE C6

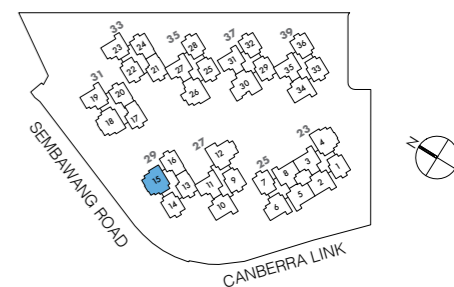
3 Bedroom  
Area: 116 sqm / 1249 sqft

# TYPE C6a

3 Bedroom  
Area: 116 sqm / 1249 sqft



Area includes A/C ledge, balcony, PES, Roof Terrace and Void (where applicable). Orientation and facings will differ depending on the unit you are purchasing (please refer to key plan). All plans are not to scale and subject to changes as may be required by relevant authorities. All appliances and furniture shown in the plan are for illustration purpose only and not representation of fact. All floor areas are estimated and subjected to final survey.  
Legend: F - Fridge DB - Distribution Board ST - Storage space WC - Water Closet W - Washer A/C - Aircon PES - Private Enclosed Space HS - Household Shelter



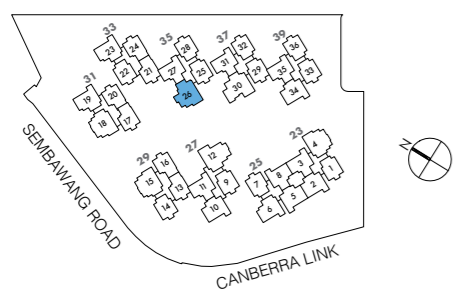
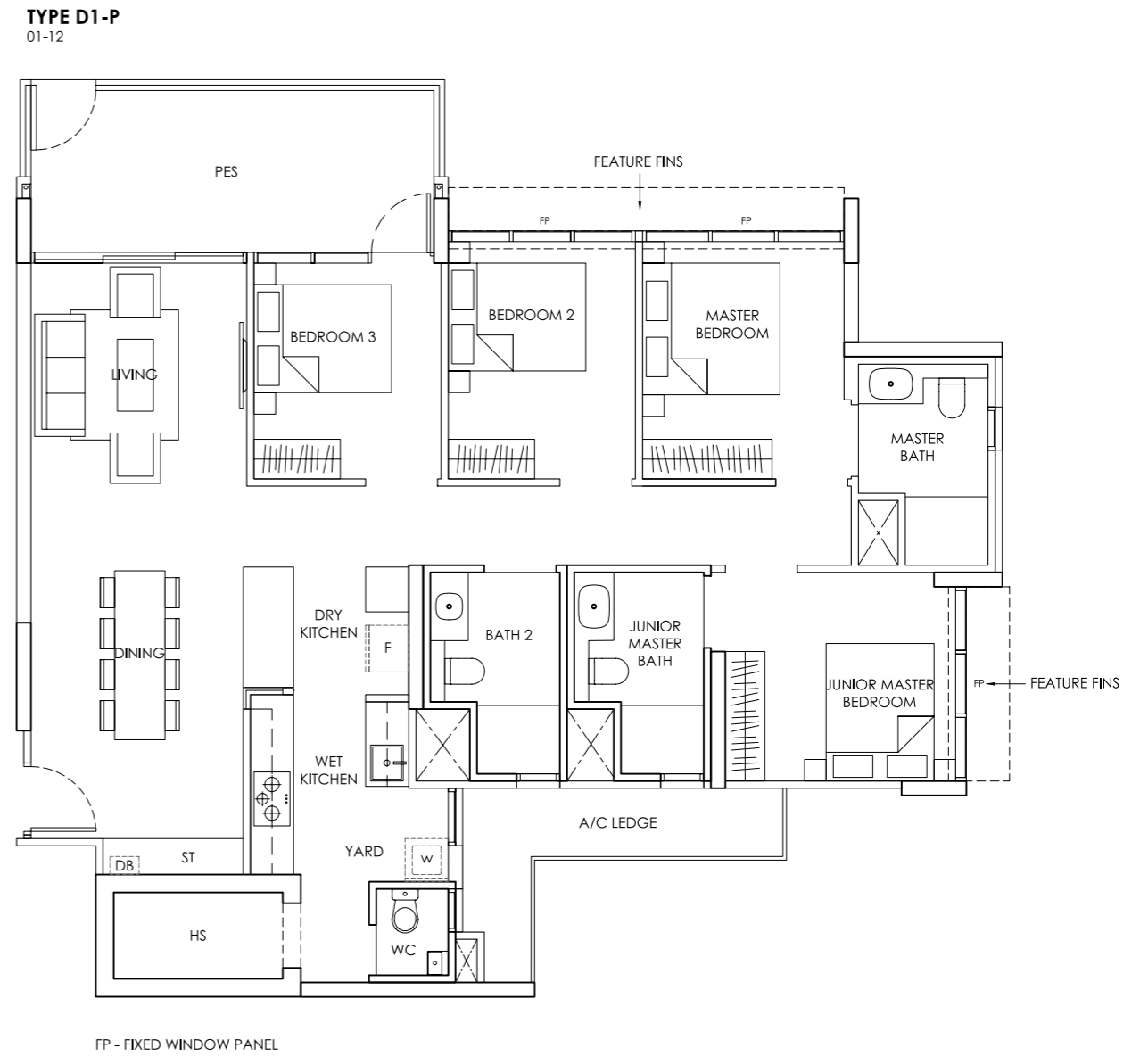
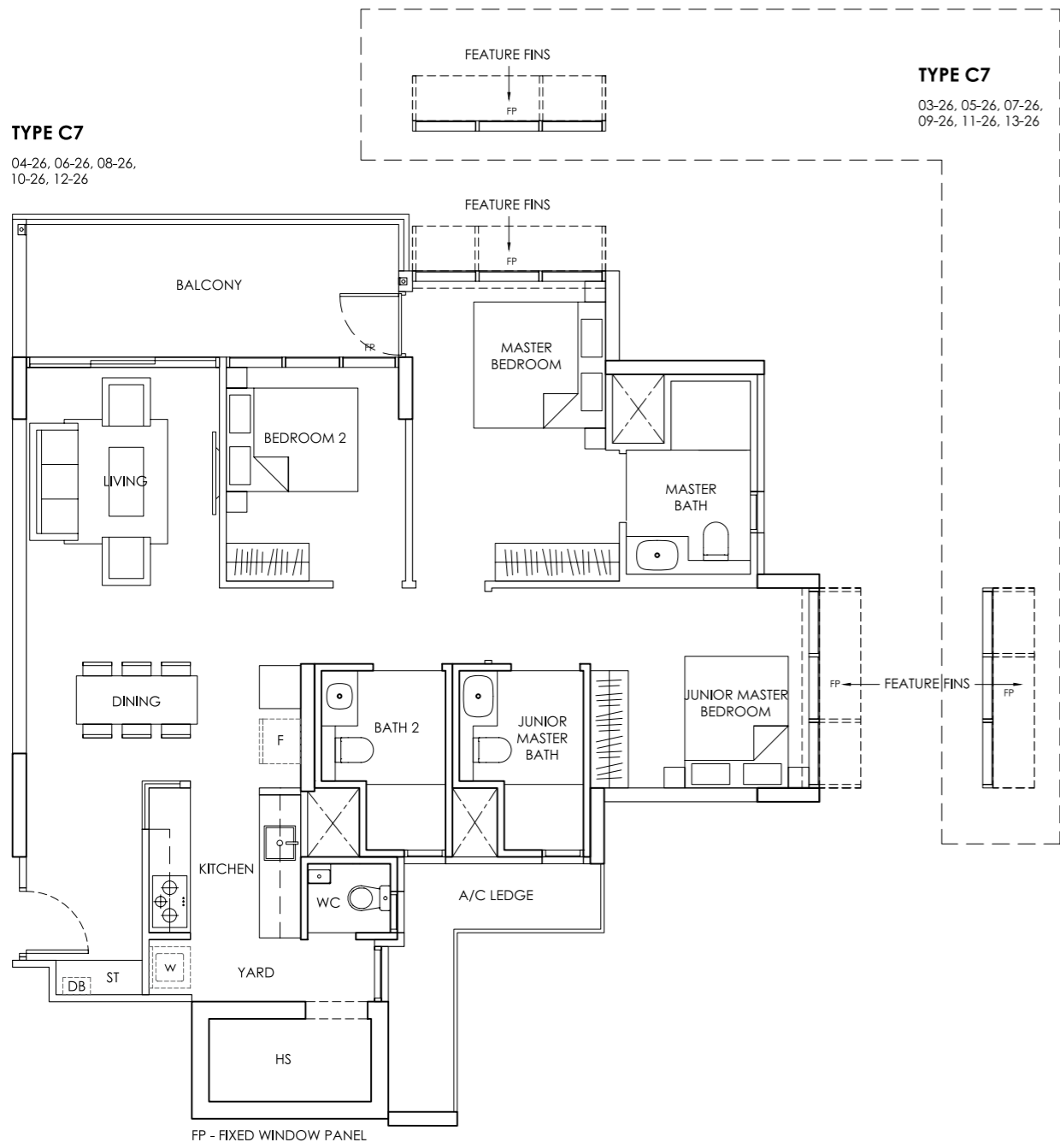
Area includes A/C ledge, balcony, PES, Roof Terrace and Void (where applicable). Orientation and facings will differ depending on the unit you are purchasing (please refer to key plan). All plans are not to scale and subject to changes as may be required by relevant authorities. All appliances and furniture shown in the plan are for illustration purpose only and not representation of fact. All floor areas are estimated and subjected to final survey.  
Legend: F - Fridge DB - Distribution Board ST - Storage space WC - Water Closet W - Washer A/C - Aircon PES - Private Enclosed Space HS - Household Shelter

# TYPE C7

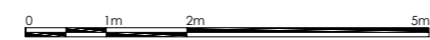
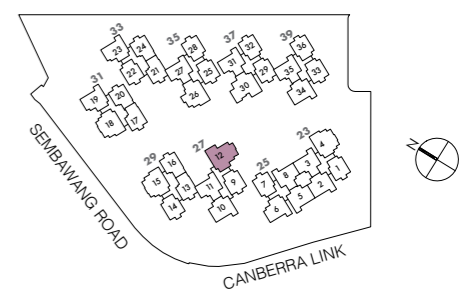
3 Bedroom  
Area: 112 sqm / 1206 sqft

# TYPE D1-P

4 Bedroom with PES  
Area: 130 sqm / 1399 sqft



Area includes A/C ledge, balcony, PES, Roof Terrace and Void (where applicable). Orientation and facings will differ depending on the unit you are purchasing (please refer to key plan). All plans are not to scale and subject to changes as may be required by relevant authorities. All appliances and furniture shown in the plan are for illustration purpose only and not representation of fact. All floor areas are estimated and subjected to final survey.  
Legend: F - Fridge DB - Distribution Board ST - Storage space WC - Water Closet W - Washer A/C - Aircon PES - Private Enclosed Space HS - Household Shelter



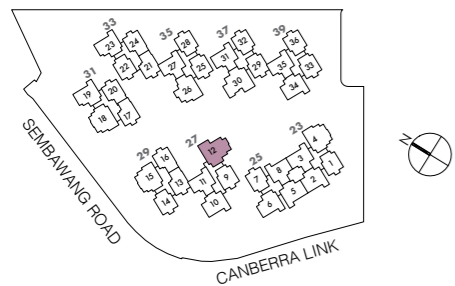
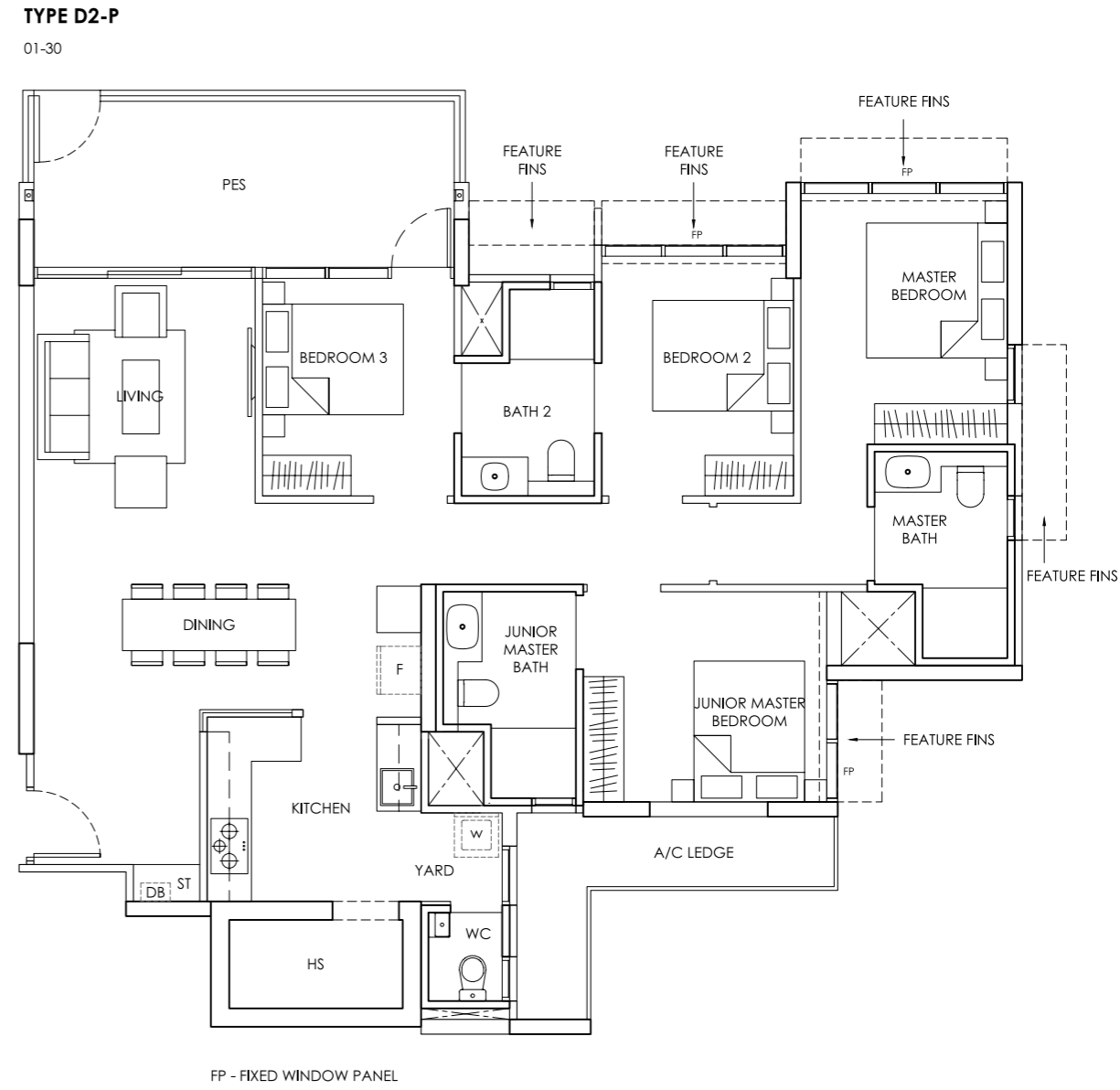
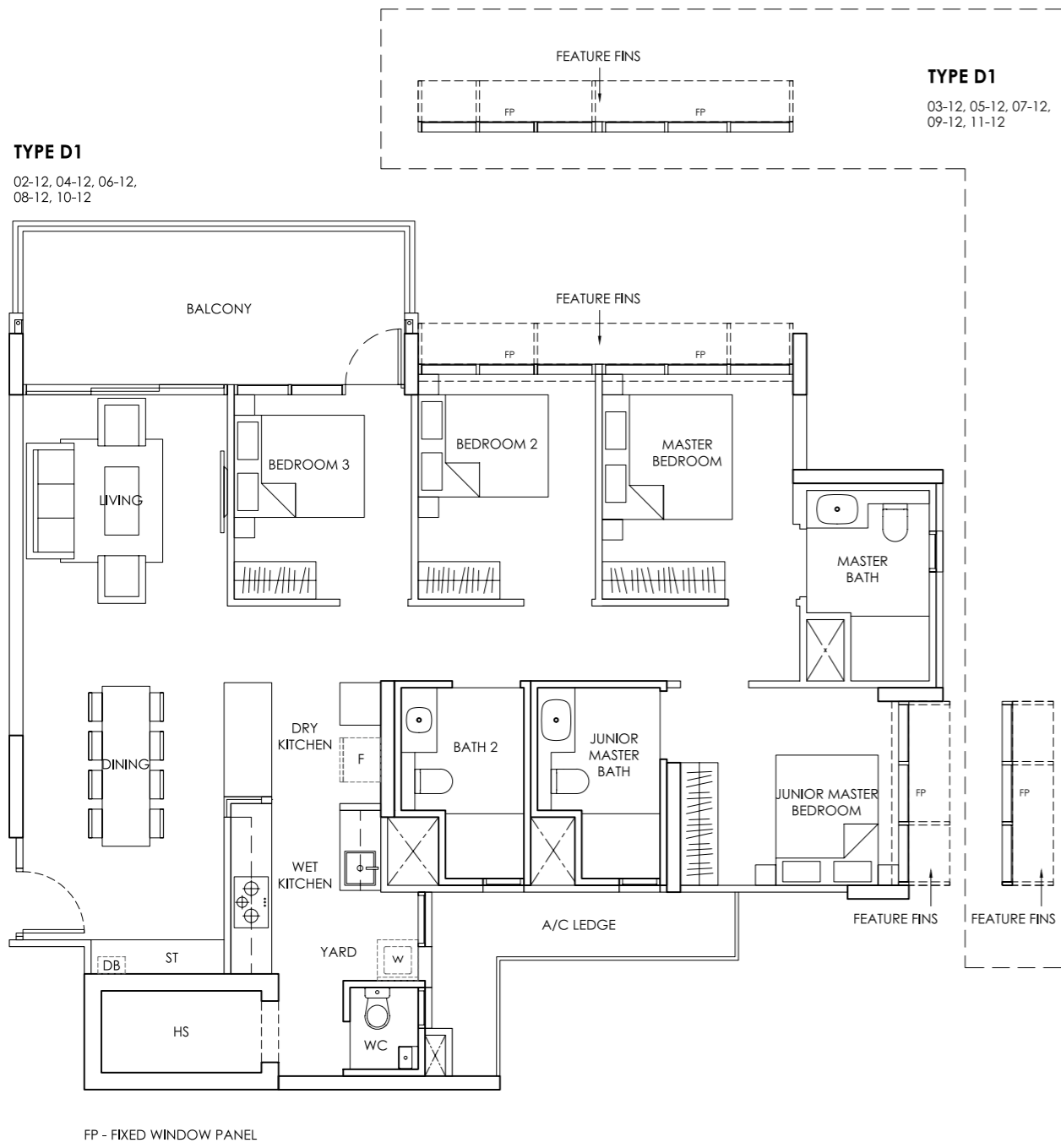
Area includes A/C ledge, balcony, PES, Roof Terrace and Void (where applicable). Orientation and facings will differ depending on the unit you are purchasing (please refer to key plan). All plans are not to scale and subject to changes as may be required by relevant authorities. All appliances and furniture shown in the plan are for illustration purpose only and not representation of fact. All floor areas are estimated and subjected to final survey.  
Legend: F - Fridge DB - Distribution Board ST - Storage space WC - Water Closet W - Washer A/C - Aircon PES - Private Enclosed Space HS - Household Shelter

# TYPE D1

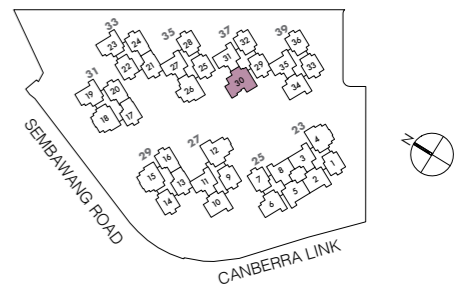
4 Bedroom  
Area: 130 sqm / 1399 sqft

# TYPE D2-P

4 Bedroom with PES  
Area: 130 sqm / 1399 sqft



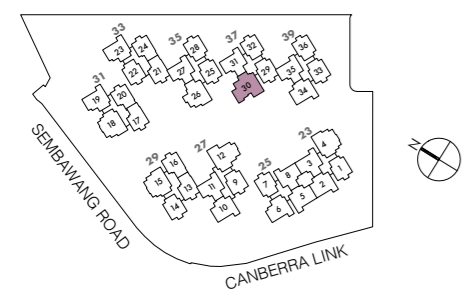
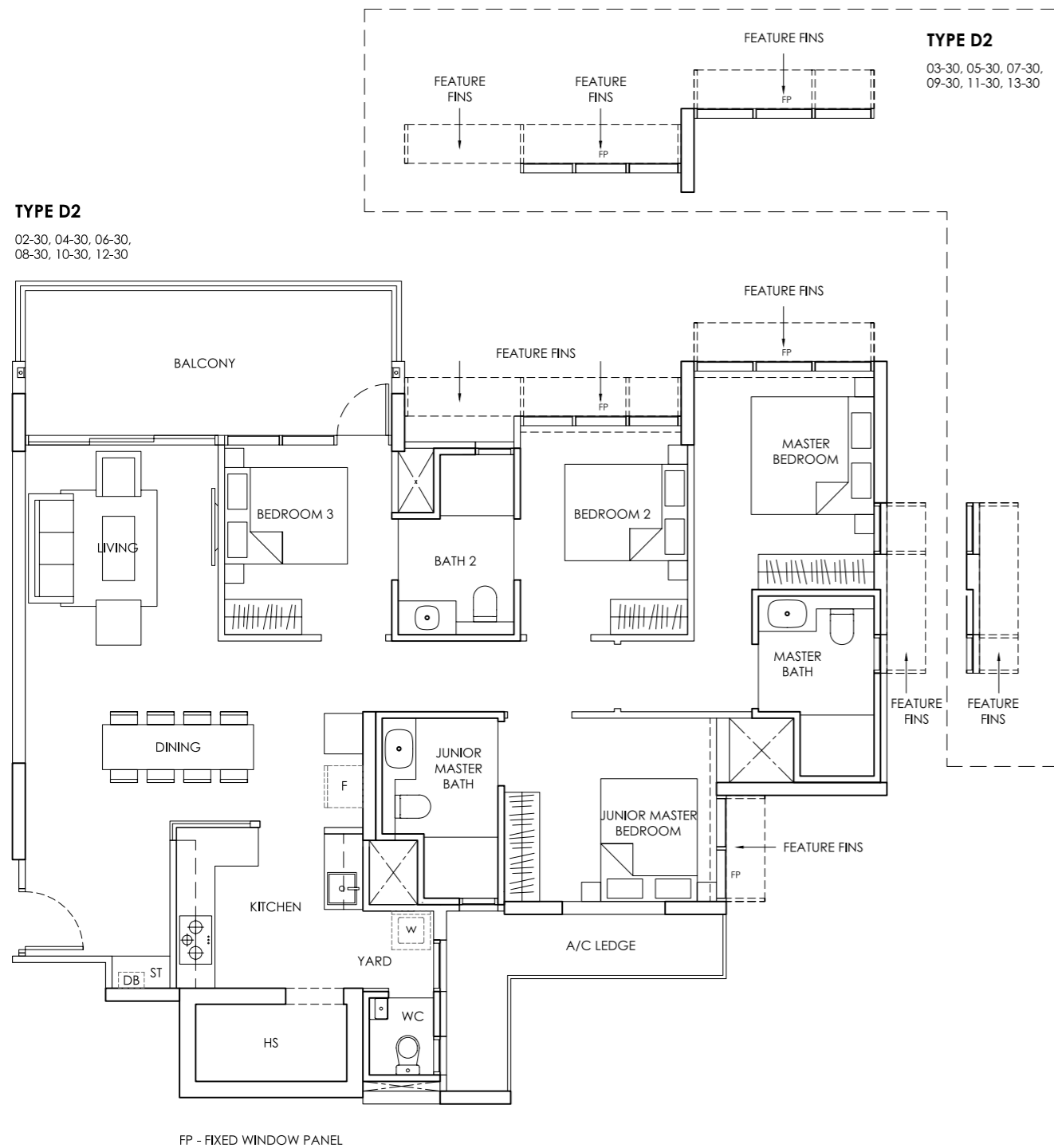
Area includes A/C ledge, balcony, PES, Roof Terrace and Void (where applicable). Orientation and facings will differ depending on the unit you are purchasing (please refer to key plan). All plans are not to scale and subject to changes as may be required by relevant authorities. All appliances and furniture shown in the plan are for illustration purpose only and not representation of fact. All floor areas are estimated and subjected to final survey.  
Legend: F - Fridge DB - Distribution Board ST - Storage space WC - Water Closet W - Washer A/C - Aircon PES - Private Enclosed Space HS - Household Shelter



Area includes A/C ledge, balcony, PES, Roof Terrace and Void (where applicable). Orientation and facings will differ depending on the unit you are purchasing (please refer to key plan). All plans are not to scale and subject to changes as may be required by relevant authorities. All appliances and furniture shown in the plan are for illustration purpose only and not representation of fact. All floor areas are estimated and subjected to final survey.  
Legend: F - Fridge DB - Distribution Board ST - Storage space WC - Water Closet W - Washer A/C - Aircon PES - Private Enclosed Space HS - Household Shelter

# TYPE D2

4 Bedroom  
Area: 130 sqm / 1399 sqft



Area includes A/C ledge, balcony, PES, Roof Terrace and Void (where applicable). Orientation and facings will differ depending on the unit you are purchasing (please refer to key plan). All plans are not to scale and subject to changes as may be required by relevant authorities. All appliances and furniture shown in the plan are for illustration purpose only and not representation of fact. All floor areas are estimated and subjected to final survey.  
Legend: F - Fridge DB - Distribution Board ST - Storage space WC - Water Closet W - Washer A/C - Aircon PES - Private Enclosed Space HS - Household Shelter



The Landmark



The Alps Residences



The Santorini



The Poiz Residences and The Poiz Centre

## DEVELOPER PROFILE

MCC Singapore is a subsidiary of Metallurgy Corporation of China Ltd which is a Fortune Global 500 company listed in Hong Kong and Shanghai. With main business in urban development and management, property development, project management as well as construction, MCC Singapore has been actively involved in transforming the cityscape of Singapore through various notable projects such as Universal Studios Singapore, Resorts World Sentosa, Keppel Distripark and Singapore Expo. In addition, MCC Singapore has also developed and/or project managed several executive condominiums and private condominiums. They includes The Alps Residences, Queens Peak, The Canopy, The Nautical, Canberra Residences, One Canberra, Forestville, The Poiz Residences and The Poiz Centre, as well as The Santorini.

Developed by



Whilst every reasonable care has been taken in preparing this brochure, the developer and its agents cannot be held responsible for any inaccuracies. All statements are believed to be correct but are not to be regarded as statements or representations of fact.

All information and specifications are current at the time of going to press and are subject to change as may be required and cannot form part of the contract. All plans are subject to any amendments approved or may be approved by the relevant authority. Visual representations including (architectural) models, drawings, photographs / pictures and artists' renderings are impression only, while illustrations of interiors are only decor suggestions and none to be regarded as representation facts. Floor areas are approximate measurements and subject to final survey.

Developer: MCC LAND (CANBERRA) PTE. LTD. • License No.: C1387 • Location: Lot 04057W MK 19 • Tenure: 99 years commencing on 8 January 2020  
• Encumbrances on the Land: Caveats IF/990269T and IF/990288J both in favour of China Construction Bank Corporation • BP No.: A1698-00679-2019-BP01 dated 11 November 2020 and A1698-00679-2019-BP02 dated 26 January 2021 • Expected Vacant Possession Date: 10 April 2026 • Expected Legal Completion Date: 10 April 2029

[provenceresidence.com.sg](http://provenceresidence.com.sg)

