

T M W

Maxwell

DEFIANCE \ NON-CONFORMIST \ QUESTIONING THE
FUTURE \ MULTI-HYPHENATES \ HYPER-CONNECTED \ NOT
DEFINED BY ONE THING \ AMBITION \ DO-MORE, DO-ALL \ BE
YOURSELF \ MAKING YOUR OWN HISTORY \ SHAPING YOUR
OWN TOMORROW \ STAY TRUE \ BREAK BOUNDARIES \ THE
ART OF BEING UNIQUE \ DEFIANCE \ NON-CONFORMIST \
QUESTIONING THE FUTURE \ MULTI-HYPHENATES \ HYPER-
CONNECTED \ NOT DEFINED BY ONE THING \ AMBITION \
DO-MORE, DO-ALL \ BE YOURSELF \ MAKING YOUR OWN
HISTORY \ SHAPING YOUR OWN TOMORROW \ STAY
TRUE \ BREAK BOUNDARIES \ THE ART OF BEING UNIQUE
\ DEFIANCE \ NON-CONFORMIST \ QUESTIONING THE
FUTURE \ MULTI-HYPHENATES \ HYPER-CONNECTED \ NOT
DEFINED BY ONE THING \ AMBITION \ DO-MORE, DO-ALL \ BE
YOURSELF \ MAKING YOUR OWN HISTORY \ SHAPING YOUR
OWN TOMORROW \ STAY TRUE \ BREAK BOUNDARIES \ THE
ART OF BEING UNIQUE \ DEFIANCE \ NON-CONFORMIST \
QUESTIONING THE FUTURE \ MULTI-HYPHENATES \ HYPER-
CONNECTED \ NOT DEFINED BY ONE THING \ AMBITION \
DO-MORE, DO-ALL \ BE YOURSELF \ MAKING YOUR OWN
HISTORY \ SHAPING YOUR OWN TOMORROW \ STAY
TRUE \ BREAK BOUNDARIES \ THE ART OF BEING UNIQUE
\ DEFIANCE \ NON-CONFORMIST \ QUESTIONING THE
FUTURE \ MULTI-HYPHENATES \ HYPER-CONNECTED \ NOT
DEFINED BY ONE THING \ AMBITION \ DO-MORE, DO-ALL \ BE
YOURSELF \ MAKING YOUR OWN HISTORY \ SHAPING YOUR
OWN TOMORROW \ STAY TRUE \ BREAK BOUNDARIES \ THE
ART OF BEING UNIQUE \ DEFIANCE \ NON-CONFORMIST \
QUESTIONING THE FUTURE \ MULTI-HYPHENATES \ HYPER-
CONNECTED \ NOT DEFINED BY ONE THING \ AMBITION \
DO-MORE, DO-ALL \ BE YOURSELF \ MAKING YOUR OWN
HISTORY \ SHAPING YOUR OWN TOMORROW \ STAY TRUE \

MULTI
SPACES

-

AT

HYPHENATE
MAXWELL

MAXWELL ROAD YTD

A building of historical significance that counts the Traffic Police, as well as Singapore's first driving test centre, among its former tenants.



Source: The Straits Times © SPH Media Limited. Reprinted with permission



MAXWELL ROAD TDY

Present-day Maxwell Chambers is the world's first integrated dispute resolution complex with best-in-class facilities.

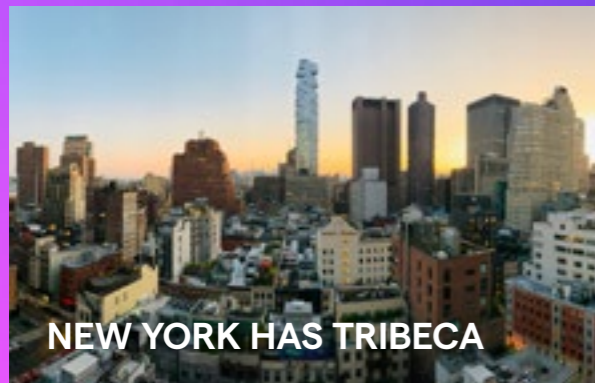


**INFINITE
TOMORROWS
BEGIN **HERE****

A NEW WAY OF LIVING SHAPED BY A NEW WAY OF THINKING



THE WORLD'S NEIGHBOURHOOD

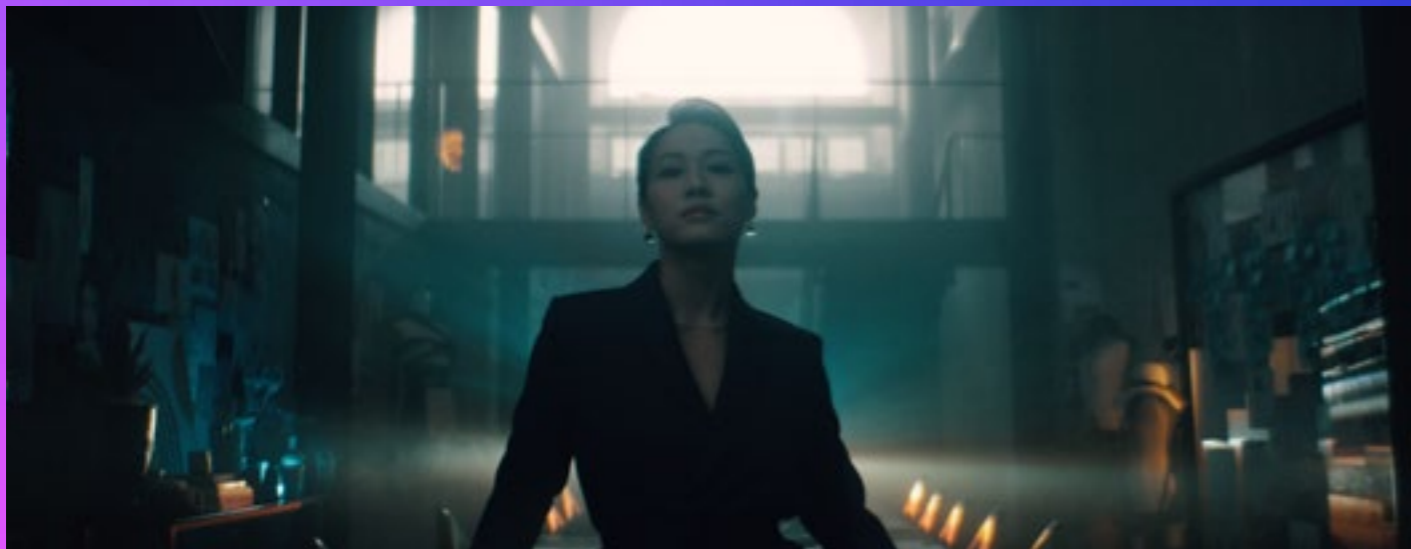




A young successful entrepreneur by day and socialite by night.
An exuberant individual in constant search of new experiences in a multi-cultural society.



Pushing limits and boundaries not just in aircraft
engineering but also his own physics as a boxer.
Stronger, faster and never stopping.



Calm, elegant and composed both as an investor and a professional dancer.
The choreographer of her life. Each step; always a precise and perfect move.



An academic professor who is more than meets the eye.
Living another life as an experiential multi-disciplinary artist
who explores new ways to visualise, taste and transcend.

A NEW WAY OF LIVING SHAPED BY A NEW WAY OF THINKING

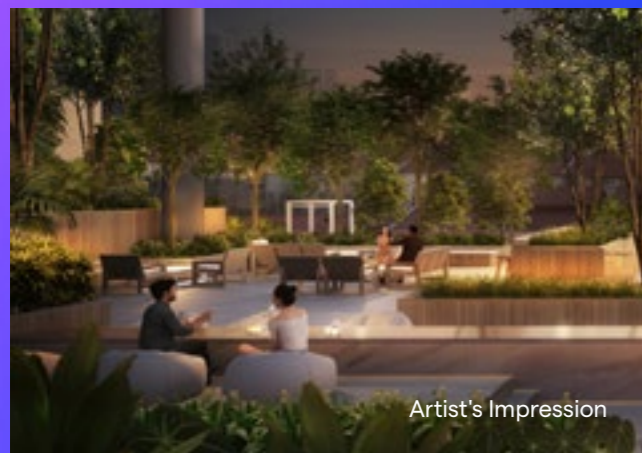
TMW Maxwell is a collection of multi-hyphenate spaces for tomorrow's multi-hyphenates. Truly-local, super-connected, hugely-productive globalists whose passion, curiosity and occupation defy categorisation and labels. TMW Maxwell is a new way of living shaped by a new way of thinking.



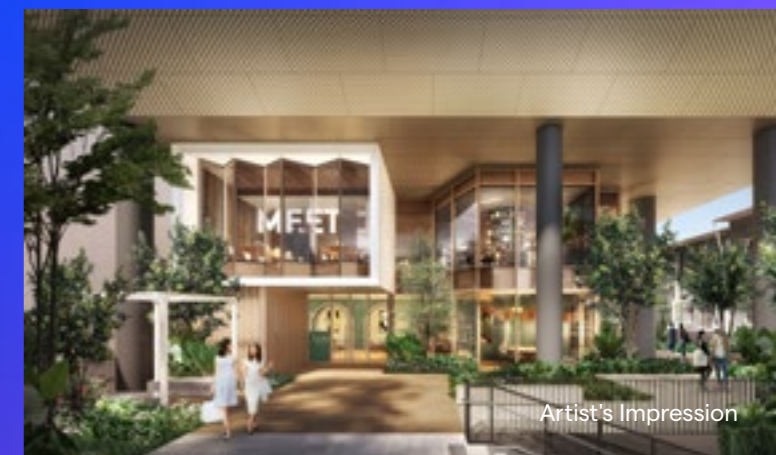
Artist's Impression

/ PART HOME / PART OFFICE / PART PARK / PART GALLERIA

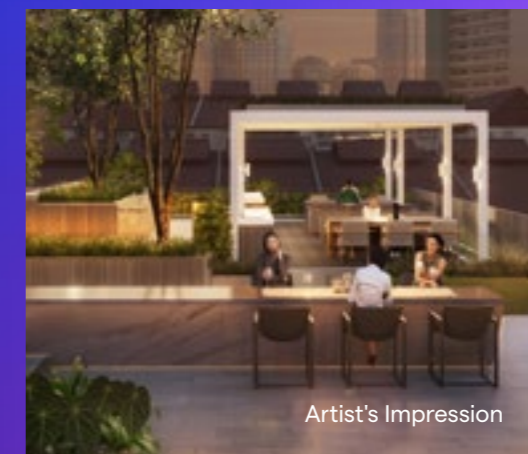
TMW Maxwell is designed for tomorrow's hybrid lifestyle. Just like how urbanites of tomorrow defy categorisation, TMW Maxwell blends home, office, park and gallery into one exciting offering.



Artist's Impression



Artist's Impression



Artist's Impression

COME FORTH WITH US



TMW

LIVES

HERE

4 - 20TH STOREY / PARK ON PARK

The green heart of Maxwell, accessible only by residents, is a focal point for you to socialise, connect, entertain and do it all. This is the Park on Park at TMW Maxwell.

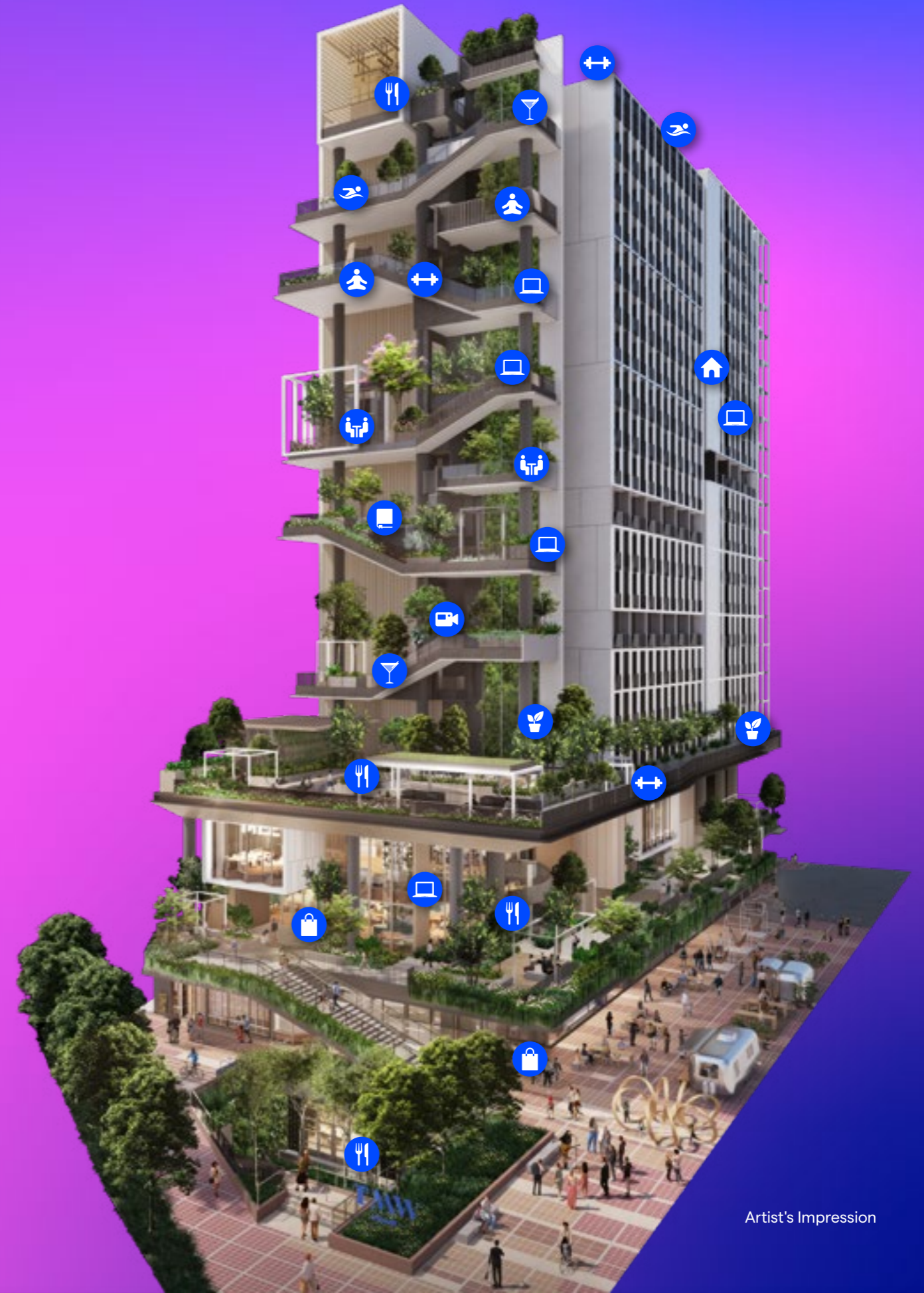
B1 - 3RD STOREY / SHOP AND DINE

The conveniences of the city come to life. Shop, dine, socialise and entertain right where you live.

B1 / GATHER

A cosy amphitheatre set within a green wall and shaded by lush canopy. Gather here as a meeting place, a breezy lunch spot, or a weekend performance stage.

- SHOP
- WORK
- READ
- SWIM
- MEDITATE
- PLAY
- LIVE
- DINE
- DRINK
- MEET
- GYM
- GARDEN




Artist's Impression

THE

LIFESTYLE

TMW Maxwell is filled with possibilities, excitement and new experiences. Live, work, and play in the city like never before.





A cosy amphitheatre set within a green wall and shaded by lush canopy. Gather here as a meeting place, a breezy lunch spot, or a weekend performance stage.

THE COMMONS

Artist's Impression

The conveniences of the city come to life, as the multi-hyphenates of TMW Maxwell and the surrounding community converge to shop, dine, socialise and entertain.



SHOP AND DINE
Artist's Impression

PARK

ON

PARK

ROOF TMW HAVEN

Sky Pavilion
Sky Lounger
Sky Deck
Outdoor Shower
Infinity Sky Pool
Sky Gym

15 - 16TH STOREY SKY POOL

Lazy Deck
Sky Jacuzzi
Outdoor Shower

12TH STOREY SOCIAL GARDEN

TMW Social Club
Social Lounge
Social Blooms

9 - 10TH STOREY OUTDOOR LIVING ROOM

Breakout Pod
The Living Room
Plug and Play

4TH STOREY THE COURTYARD

Courtyard Dining
Festival Lawn
Courtyard Lounge
Fitness Courtyard
Courtyard Garden
Farm-to-Fork Garden

20TH STOREY SKY LOUNGE

Panorama

18 - 19TH STOREY SKY BAR

All-day Bar
Cocktail Bar

17TH STOREY WELLNESS TERRACE

Wellness Deck

13TH STOREY THE BAR LOUNGE

Plug and Work

11TH STOREY DO-IT-ALL DECK

Executive Lounge

6 - 7TH STOREY TMW STUDY

Reading Alcove
Working Lounge

As lives and stories unravel at TMW Maxwell, a biophilic spectacle arises. Fronting the buzz of lively Maxwell Road are a series of vertically stacked gardens. Ascending from the pedestrian level in a breathtaking crescendo right up to the peak, these gardens are principally designed based on duality - versatile green spaces that adapt and change throughout any given day. While levels and amenities from the 4th storey onwards are exclusive to residents, the overall facade draws the admiration of all. Within it, a perfect synchrony of facilities, ambiances and spatial concepts.



Rub shoulders with neighbours. Wind the day down with a significant other. The Courtyard presents an exciting mix of amenities including a Festival Lawn, Courtyard Dining, and even a Farm-to-Fork Garden where great company is better enjoyed with your very own produce.

TMW SOCIALISES HERE

COURTYARD DINING

Artist's Impression

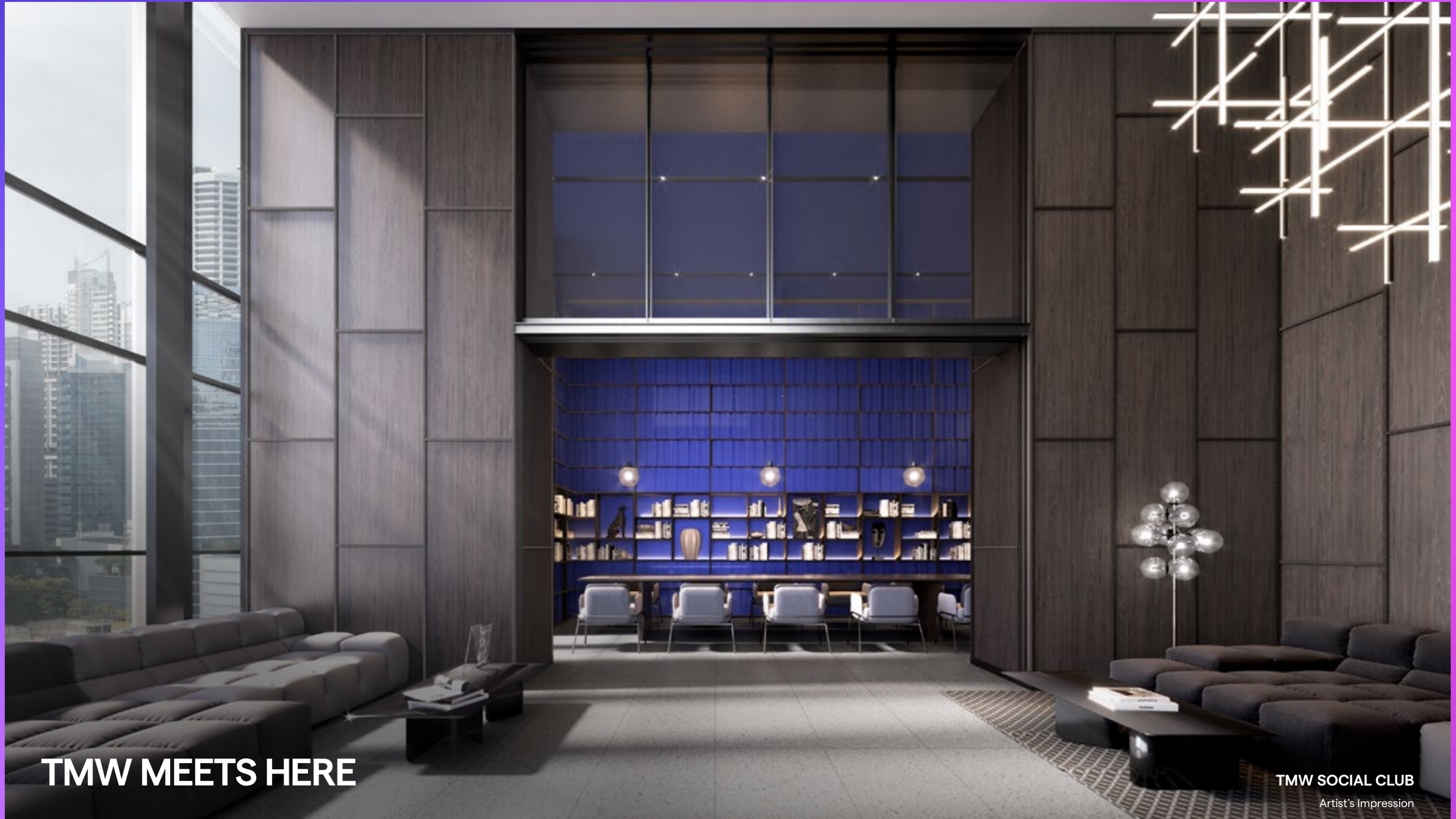


The Living Room is like an extension of home. Spacious enough to accommodate more pals and family on movie nights, and invitingly snug for when you wish to binge on your favourite shows.

TMW UNWINDS HERE


THE LIVING ROOM
Artist's Impression

Where you can feel exclusive yet, a sense of belonging. The TMW Social Club is a gateway to a private community made up of trendsetters, go-getters and of course, the multi-hyphenates of tomorrow.



TMW MEETS HERE

TMW SOCIAL CLUB
Artist's Impression

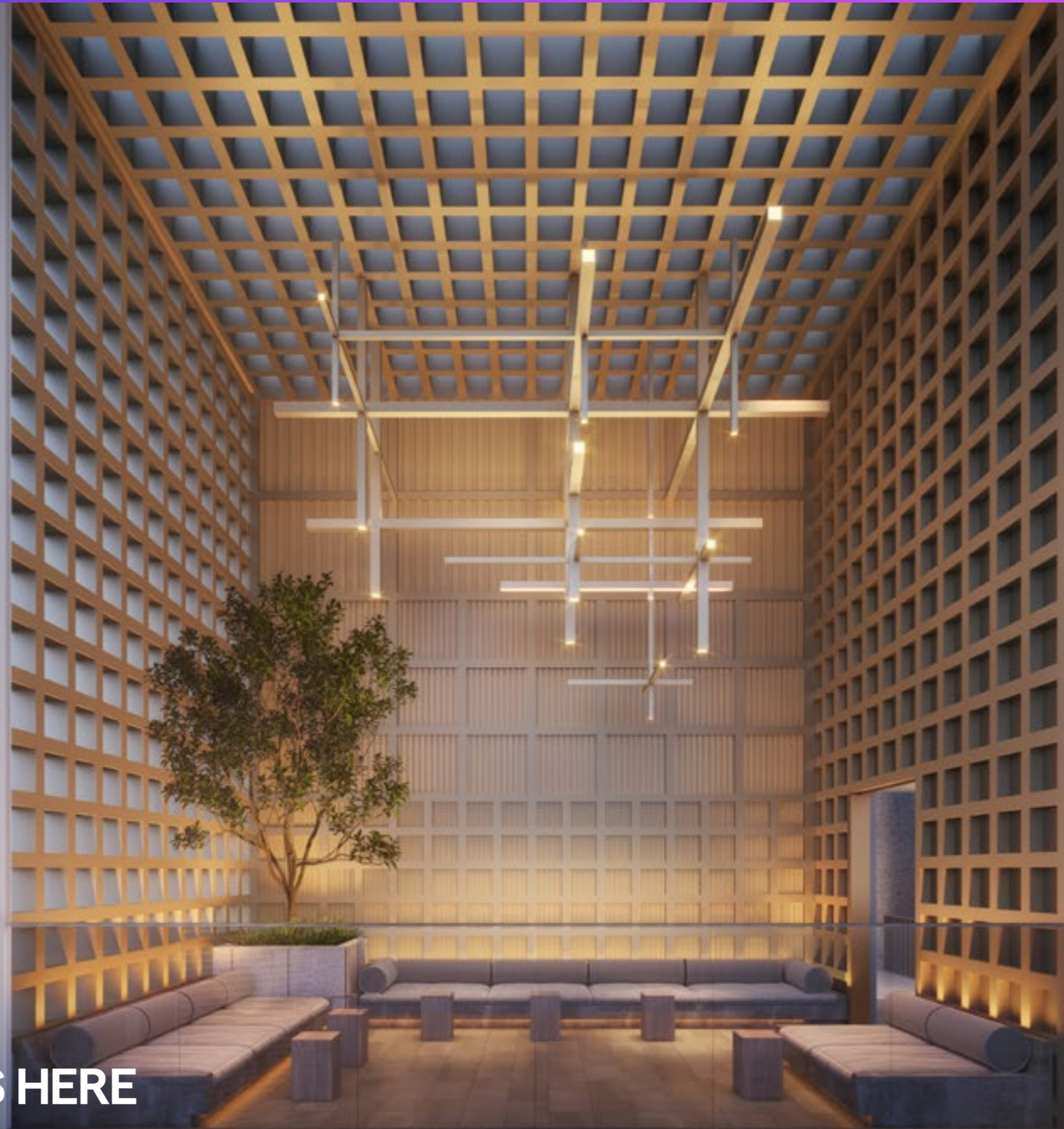


Take an unhurried dip in the Sky Jacuzzi. Or lounge leisurely along the Lazy Deck. Whether you prefer being in the water or staying dry, taking things down a notch is a bliss on days when you crave a slower pace.

TMW LOUNGES HERE

SKY JACUZZI
Artist's Impression

Panorama provides the perfect settings for hosting, impressing, or simply relaxing with your favourite wine, thanks to its impressive views from 20 storeys high.



TMW IMPRESSES HERE

PANORAMA
Artist's Impression

Pace yourself along the city's pulsating beats in the Sky Gym that is well-equipped with both modern equipment and energy-boosting views.

TMW GYMS HERE

SKY GYM

Artist's Impression

Every victory lap feels sweeter when you are closer to the star-lit sky. The Infinity Sky Pool is where you can head up to, to wind down. Or take in the city's skyline in all its glory.



TMW REFRESHES HERE

INFINITY SKY POOL
Artist's Impression

FLIP / SWITCH



FLIP / SWITCH

FLIP / SWITCH units are designed with innovative, transformable furniture. Each permutation flips and switches to facilitate highly flexible and versatile living spaces. With every variation constantly adapting to the dynamic needs of the multi-hyphenate dweller.



SPACE AS DYNAMIC AS YOU ARE

A home should adapt to the way you live. Not the other way round. In the city living of TMW Maxwell, we have designed clever spaces that flip/switch from day to night, live to work, for one person to a party of many.



WORK SETTING
DAY SCENE

4-5 PAX



SOCIAL SETTING
PARTY SCENE

10-11 PAX



BEDROOM SETTING
NIGHT SCENE

1-2 PAX





1



2



3



4



5

- 1 Movable Wardrobe with Flip-Down Study Table
- 2 Queen Size Murphy Bed with integrated Sofa
- 3 Balcony Flip-Down Table

- 4 Integrated Flip-Down Ironing Board
- 5 Pull-out Counter in Laminate Finish complete with Cutlery Tray

1-BEDROOM + STUDY

Much like how its occupants defy the status quo, 1-Bedroom+Study units are laid out for optimum efficiency that belie their compact sizes.



Artist's Impression



2-BEDROOM PREMIUM

2-Bedroom homes offer more space for more of the things that multi-hyphenates seek when it comes to inspiration and fulfilment.



BRANDED FINISHING TOUCHES

A beautifully curated material palette elevates the living experience, while premium fittings and appliances exude touches of elegance.



MULTIPLE SMART FEATURES FOR THE MULTI-HYPHENATES

There is no place like home. For the multi-hyphenates of tomorrow, this certainly rings true here in TMW Maxwell where homes are fitted with multiple smart features that enable and empower simultaneous live, work and play lifestyles.



SMART HOME HUB

A centralised control hub that connects to all compatible devices seamlessly.



DIGITAL LOCKSET

Added convenience of touchless and remote door security.



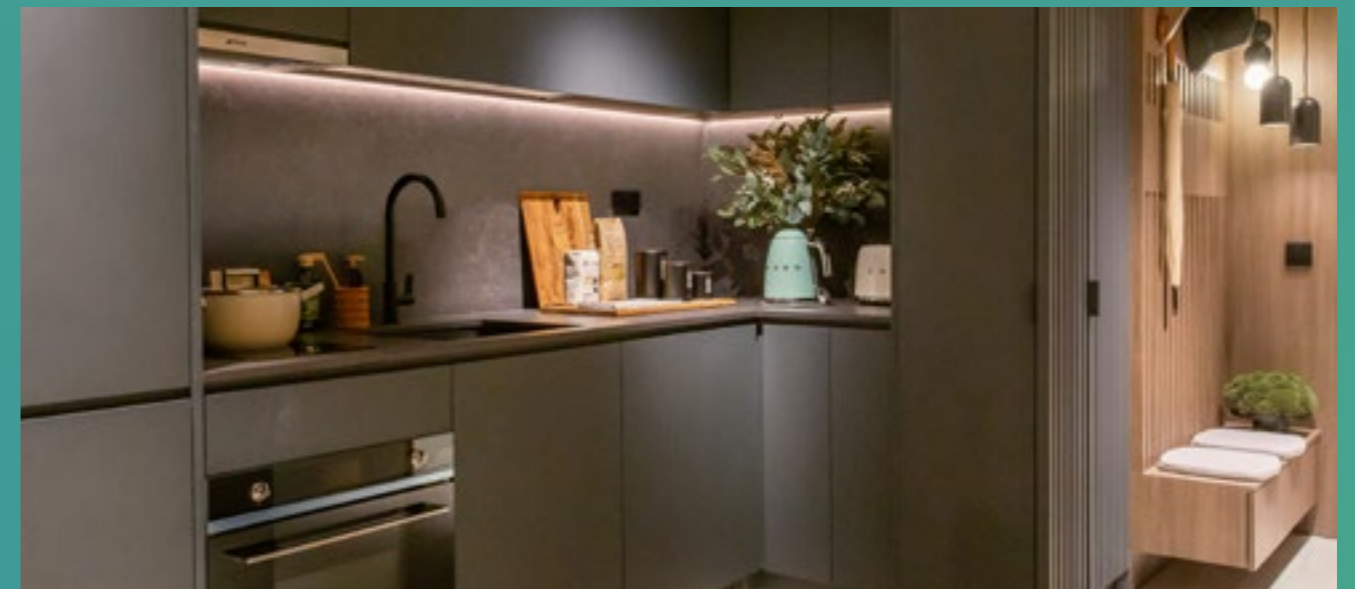
IP CAMERA

Remote monitoring of in-house activities for extra peace of mind.



SMART AIR CONDITIONER CONTROLS

Wireless control over air conditioning optimises comfort levels even before every arrival home.



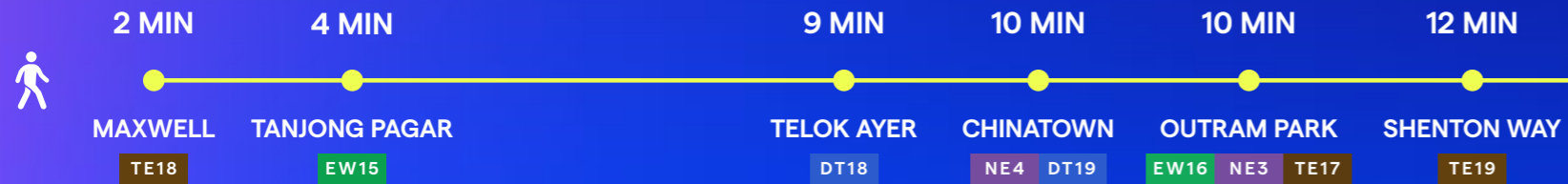
AT THE HEART OF MULTIPLE ENCLAVES



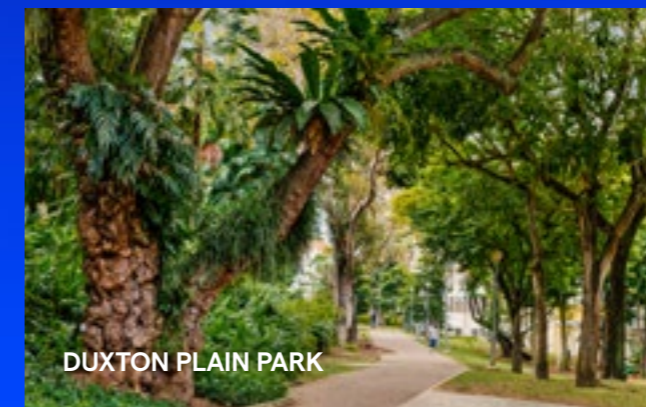
4 LINES, 5 PARKS, 6 MRT STATIONS ALL WITHIN YOUR DOORSTEP

TMW Maxwell is now better-connected than ever with 6 MRT stations within proximity. Right at the doorstep is Maxwell MRT which links up to the new Thomson-East Coast Line, while nearby Tanjong Pagar MRT takes you to key venues such as Raffles Place, City Hall and Bugis.

A wealth of parks and green spaces surround the development including a newly-built 6km cycling path. Paving the way for easy connectivity on both MRT and two wheels.



*Time indicated is based on estimate from Google Maps



MAXWELL MRT

DUXTON PLAIN PARK

ANN SIANG HILL PARK

TRAS LINK PARK

TELOK AYER PARK

TANJONG PAGAR PARK

A PLACE OF MANY GREAT STREETS

With great streets all around, there is always an adventure waiting to be discovered around every corner. The whole hood really is your playground.



LAU PA SAT



CLUB STREET



CHINATOWN



KEONG SAIK ROAD



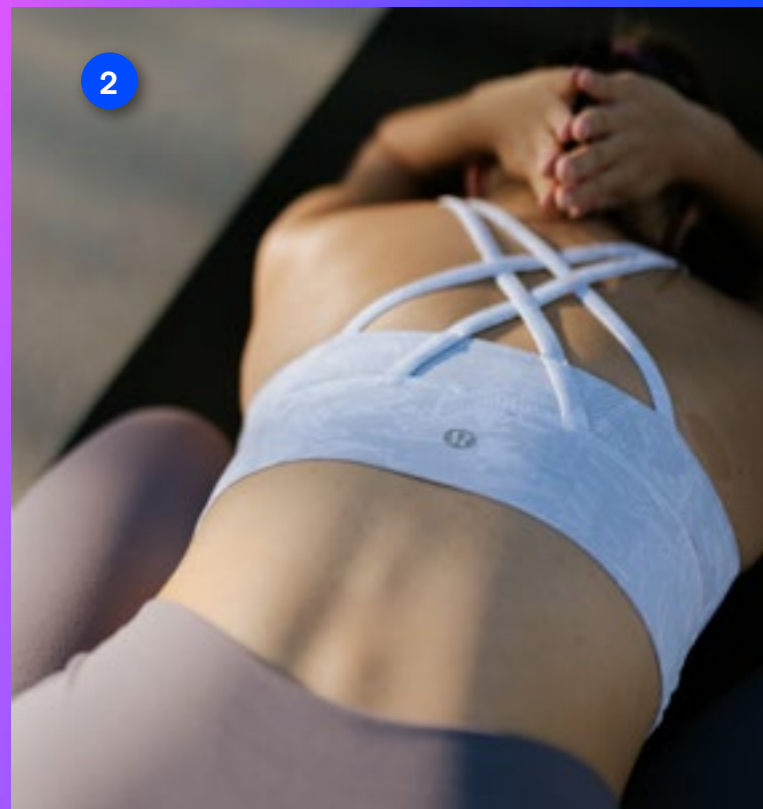
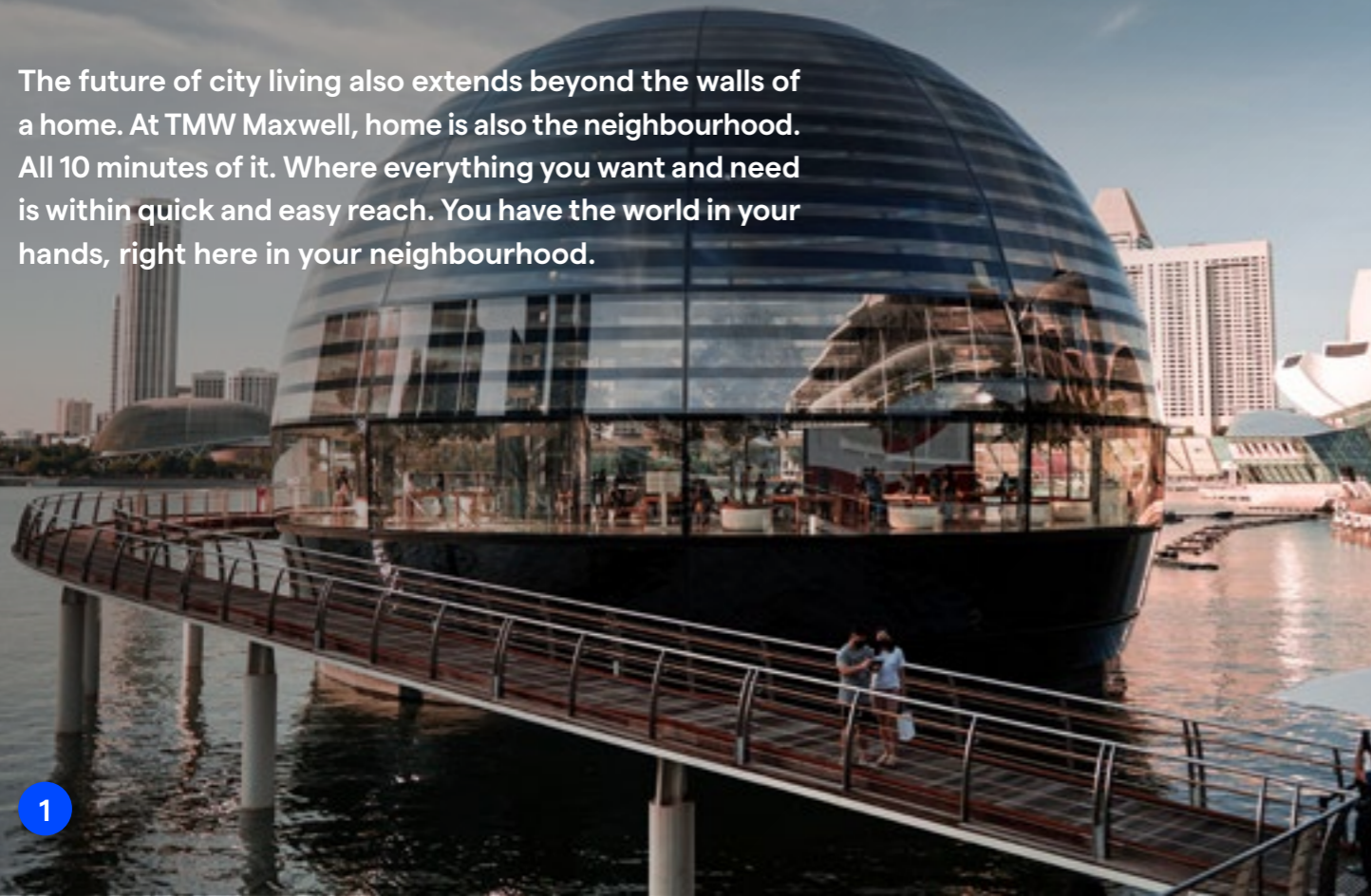
DUXTON ROAD

GLOBAL



LOCAL

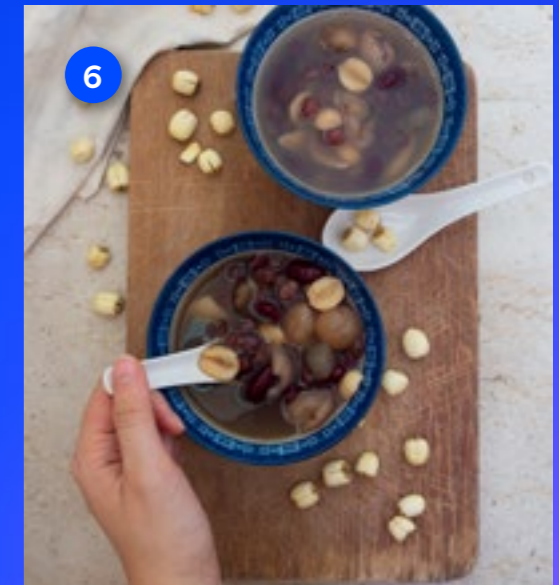
The future of city living also extends beyond the walls of a home. At TMW Maxwell, home is also the neighbourhood. All 10 minutes of it. Where everything you want and need is within quick and easy reach. You have the world in your hands, right here in your neighbourhood.



- 1 Apple
- 2 Lululemon
- 3 Gokoku Japanese Bakery



- 4 Littered With Books
- 5 The 1925 Brewing Co.
- 6 Darkness Dessert



Scan or click [here](#) to find out more about TMW Maxwell's collaboration with The 1925 Brewing Co.



CULTURE

×

COMMERCE

1

4

2

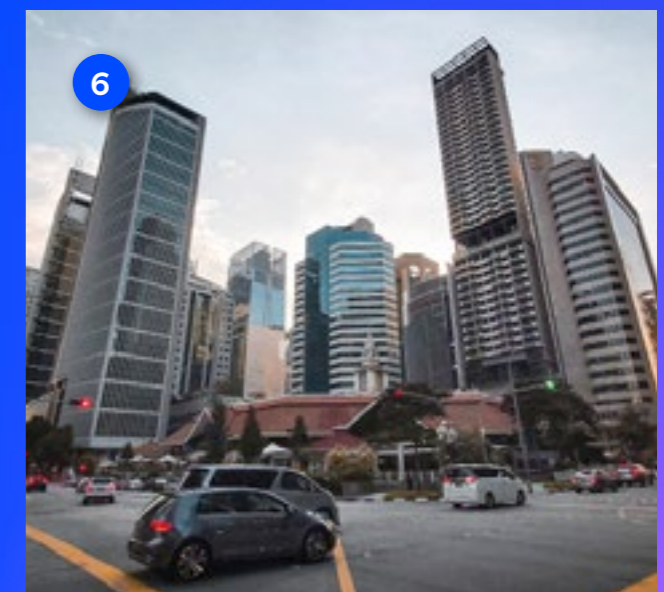
3

- 4 Marina Bay Financial Centre (MBFC)
- 5 Guoco Tower
- 6 Central Business District (CBD)

5

6

- 1 Lau Pa Sat
- 2 Buddha Tooth Relic Temple
- 3 ArtScience Museum





GOURMET

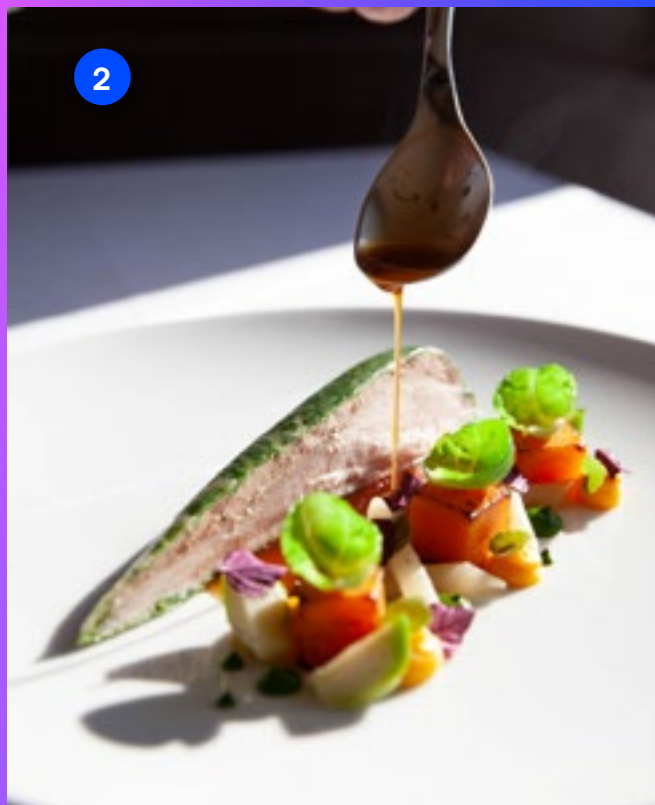
1

×



HAWKER

7



2

- 1 Rhubarb
- 2 Brasserie Gavroche
- 3 BAM! Restaurant
- 4 Junior the Pocket Bar
- 5 ANJU
- 6 Levant



4



8



9

- 7 Tanjong Pagar Plaza Market & Food Centre
- 8 Maxwell Food Centre
- 9 Market Street Hawker Centre

YTD IS HISTORY

TMW IS HERE



CHANGE-MAKERS OF TMW

**FORMWERKZ
ARCHITECTS**

ARCHITECT



Alan Tay Shiao Shih
Seetoh Kum Loon
Laurence Liew
Cynthia Soon
Chen Xuezhen
Tan Xin Yuan
Wang Hu
Wu Zhiyang

CO²
compound collaborative

LANDSCAPE ARCHITECT



Ng Sze Oun
Helen Low

Stacy Peh
Adelene Koh
Chailangka Manthakorn
Pluem Pongpibal
Alvin Yong
Katherine Gandas
Frederick Ruff Sy

FARM

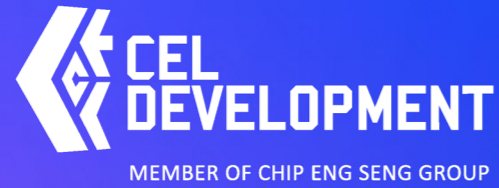
CREATIVE & SALES GALLERY INTERIOR DESIGN



Selwyn Low
Willie Koh
Gareth Low
Wenxin Oh
Elwin Chan
Limay Foo

Jou Wen Tan
Rebekah Lee
Darren Phua
Joel Lee
Yolande Leong

A MULTI-HYPHENATE DEVELOPMENT BY



Name of Developer: Maxwell Residential Pte. Ltd. (UEN: 202117625M) • Maxwell Commercial Pte. Ltd. (UEN: 202117620W) • Housing Developer's Licence No: C1452 • Tenure of Land: Remainder of leasehold estate of 99 years commencing on 28 Apr 2023 • Encumbrances on the Land: Mortgage(s) in favour of United Overseas Bank Limited • Expected Date of Vacant Possession: 30 June 2028 • Expected Date of Legal Completion: 30 June 2031 • Location: Lot No. 359C of Town Subdivision 3 at Tras Street, Singapore

While every reasonable care has been taken in preparing this brochure, the specifications and the attached plans, and in constructing the sales models and showflats, the Developer and its agents shall not be held responsible for any inaccuracies or omissions. All statements, specifications, information, depictions and plans in the brochure are believed to be accurate at the time of publication but shall not be regarded or relied upon as statements or representations of fact. All information, specifications and plans are subject to change/ amendments as may be required and/or approved by the Developer and/or the building authorities and other relevant authorities and do not form part of an offer or contract. Visual representations, illustrations, photographs, graphic representations, sales models, showflat displays, pictures and other art renderings are only artist's impressions of the development and are not to be regarded or relied upon as statements and representations of fact. Photographs for images contained in this brochure do not necessarily represent as built standard specifications. All areas are approximate measurements only and are subject to final survey. The property is subject to final inspection by the relevant authorities to comply with current codes of practice. The sale and purchase agreement shall form the entire agreement between the Developer and the purchaser and shall supersede all statements, representations or promises made prior to the signing of the sale and purchase agreement and shall in no way be modified by any such statements, representations or promises made.

DEFIANCE \ NON-CONFORMIST \ QUESTIONING THE
FUTURE \ MULTI-HYPHENATES \ HYPER-CONNECTED \ NOT
DEFINED BY ONE THING \ AMBITION \ DO-MORE, DO-ALL \ BE
YOURSELF \ MAKING YOUR OWN HISTORY \ SHAPING YOUR
OWN TOMORROW \ STAY TRUE \ BREAK BOUNDARIES \ THE
ART OF BEING UNIQUE \ DEFIANCE \ NON-CONFORMIST \
QUESTIONING THE FUTURE \ MULTI-HYPHENATES \ HYPER-
CONNECTED \ NOT DEFINED BY ONE THING \ AMBITION \
DO-MORE, DO-ALL \ BE YOURSELF \ MAKING YOUR OWN
HISTORY \ SHAPING YOUR OWN TOMORROW \ STAY
TRUE \ BREAK BOUNDARIES \ THE ART OF BEING UNIQUE
\ DEFIANCE \ NON-CONFORMIST \ QUESTIONING THE
FUTURE \ MULTI-HYPHENATES \ HYPER-CONNECTED \ NOT
DEFINED BY ONE THING \ AMBITION \ DO-MORE, DO-ALL \ BE
YOURSELF \ MAKING YOUR OWN HISTORY \ SHAPING YOUR
OWN TOMORROW \ STAY TRUE \ BREAK BOUNDARIES \ THE
ART OF BEING UNIQUE \ DEFIANCE \ NON-CONFORMIST \
QUESTIONING THE FUTURE \ MULTI-HYPHENATES \ HYPER-
CONNECTED \ NOT DEFINED BY ONE THING \ AMBITION \
DO-MORE, DO-ALL \ BE YOURSELF \ MAKING YOUR OWN
HISTORY \ SHAPING YOUR OWN TOMORROW \ STAY
TRUE \ BREAK BOUNDARIES \ THE ART OF BEING UNIQUE
\ DEFIANCE \ NON-CONFORMIST \ QUESTIONING THE
FUTURE \ MULTI-HYPHENATES \ HYPER-CONNECTED \
NOT DEFINED BY ONE THING \ AMBITION \ DO-MORE,
DO-ALL \ BE YOURSELF \ MAKING YOUR OWN HISTORY \
SHAPING YOUR OWN TOMORROW \ STAY TRUE \ BREAK
BOUNDARIES \ THE ART OF BEING UNIQUE \ DEFIANCE \
NON-CONFORMIST \ QUESTIONING THE FUTURE \ MULTI-
HYPHENATES \ HYPER-CONNECTED \ NOT DEFINED BY ONE
THING \ AMBITION \ DO-MORE, DO-ALL \ BE YOURSELF
\ MAKING YOUR OWN HISTORY \ SHAPING YOUR OWN
TOMORROW \ STAY TRUE \ BREAK BOUNDARIES \ THE
ART OF BEING UNIQUE \ DEFIANCE \ NON-CONFORMIST \
QUESTIONING THE FUTURE \ MULTI-HYPHENATES \ HYPER-
CONNECTED \ NOT DEFINED BY ONE THING \ AMBITION \
DO-MORE, DO-ALL \ BE YOURSELF \ MAKING YOUR OWN
HISTORY \ SHAPING YOUR OWN TOMORROW \ STAY TRUE